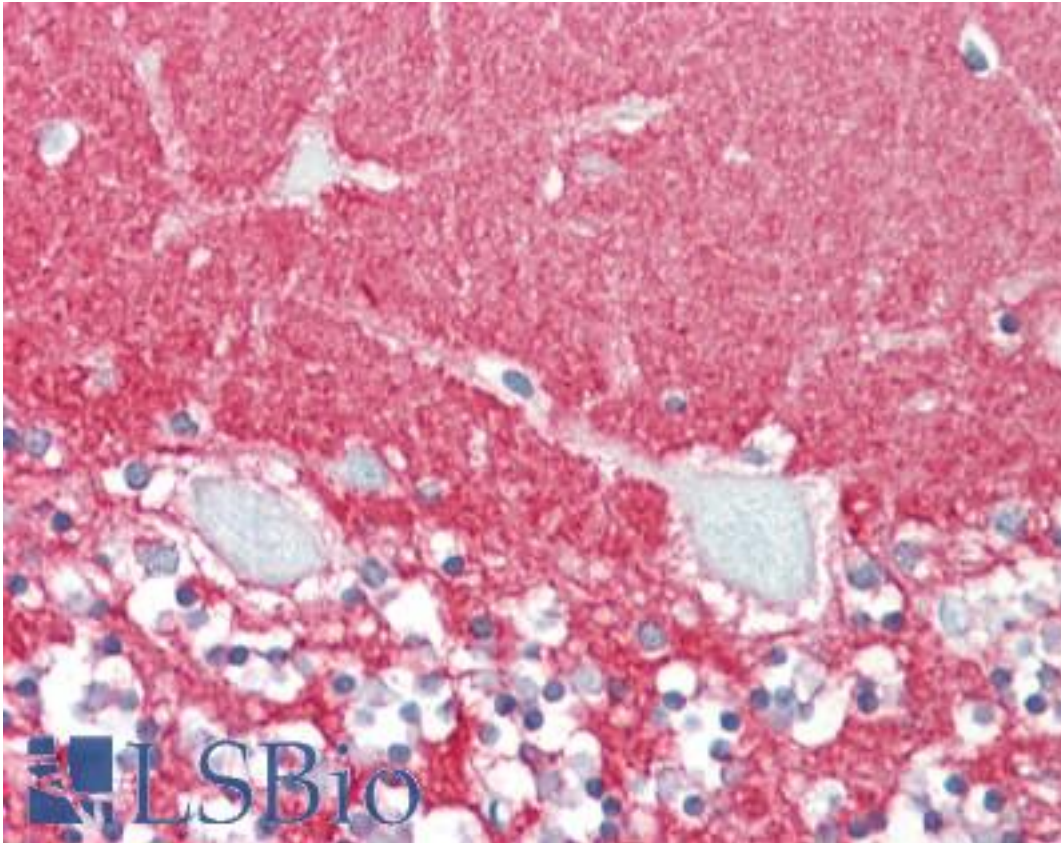


GPM6A / M6A Goat anti-Human Polyclonal (Internal) Antibody - LS-B9226 - LSBio

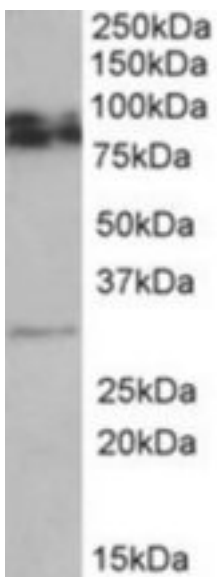
| | |
|------------------------------|---|
| CatalogID: | LS-B9226 |
| Validation: | This antibody replaces catalog number LS-C139713. It has been validated for use in the following assays: IHC-P. |
| Target: | glycoprotein M6A (GPM6A) |
| Synonyms: | GPM6A Antibody, GPM6 Antibody, Glycoprotein M6A Antibody, M6A Antibody, Membrane glycoprotein m6-a Antibody |
| Host | GPM6A antibody was produced in Goat |
| Clonality: | Polyclonal |
| Immunogen Species: | GPM6A / M6A antibody was raised against Human |
| Antigen Type: | Synthetic peptide |
| Immunogen: | GPM6A / M6A antibody was raised against synthetic peptide C-QTYFEMARTAGD from an internal region of human GPM6A (NP_005268.1; NP_963885.1; NP_963886.1). Percent identity by BLAST analysis: Human, Gorilla, Orangutan, Gibbon, Monkey, Marmoset, Rat, Panda, Dog, Bovine, Horse, Rabbit, Xenopus (100%); Mouse, Elephant, Chicken, Platypus, Lizard (92%); Opossum, Turkey (83%). |
| Specificity: | Human GPM6A. This antibody is expected to recognize all reported isoforms (NP_005268.1; NP_963885.1; NP_963886.1). Reported variants represent identical protein: NP_963885.1, NP_005268.1. |
| Epitope: | Internal |
| Reactivity: | Human, Gorilla, Orangutan, Gibbon, Monkey, Rat, Bovine, Dog, Horse, Rabbit, Xenopus |
| Predicted Reactivity: | Mouse, Chicken |
| Purification: | Immunoaffinity purified |
| Presentation: | Tris-buffered saline, pH 7.3, 0.5% BSA, 0.02% sodium azide |
| Recommended Storage: | Store at -20°C. Minimize freezing and thawing. |
| Usage Summary: | Peptide ELISA: antibody detection limit dilution 1:32000. Western blot: Approx 30kD band observed in Rat Brain lysates. An approx. 80kD band was observed in Human, Mouse and Rat Brain lysates (calculated MW of 31.2kD according to NP_005268.1). The observed 80kD band corresponds to the glycosylated form. Recommended concentration: 0.5-2 ug/ml. This product has been demonstrated not suitable in IF. |
| Uses: | IHC - Paraffin (3.75 µg/ml), Western blot (0.5 - 2 µg/ml), ELISA (1:32000) (Optimal dilution to be determined by the researcher) |
| Size: | 50 µg |
| Concentration: | 0.5 mg/ml |

Immunohistochemistry Image:



Human Brain, Cerebellum: Formalin-Fixed, Paraffin-Embedded (FFPE)

Western Blot Image:



GPM6A antibody (0.5 ug/ml) staining of Rat Brain lysate (35 ug protein/ml in RIPA buffer). Primary incubation was 1 hour. Detected by chemiluminescence.

Requested From:

Japan

Laboratory Reagent For In Vitro Research Use Only

Not for resale without prior written consent from LifeSpan BioSciences, Inc.

Created on 9/24/2014

© 2014 LifeSpan BioSciences