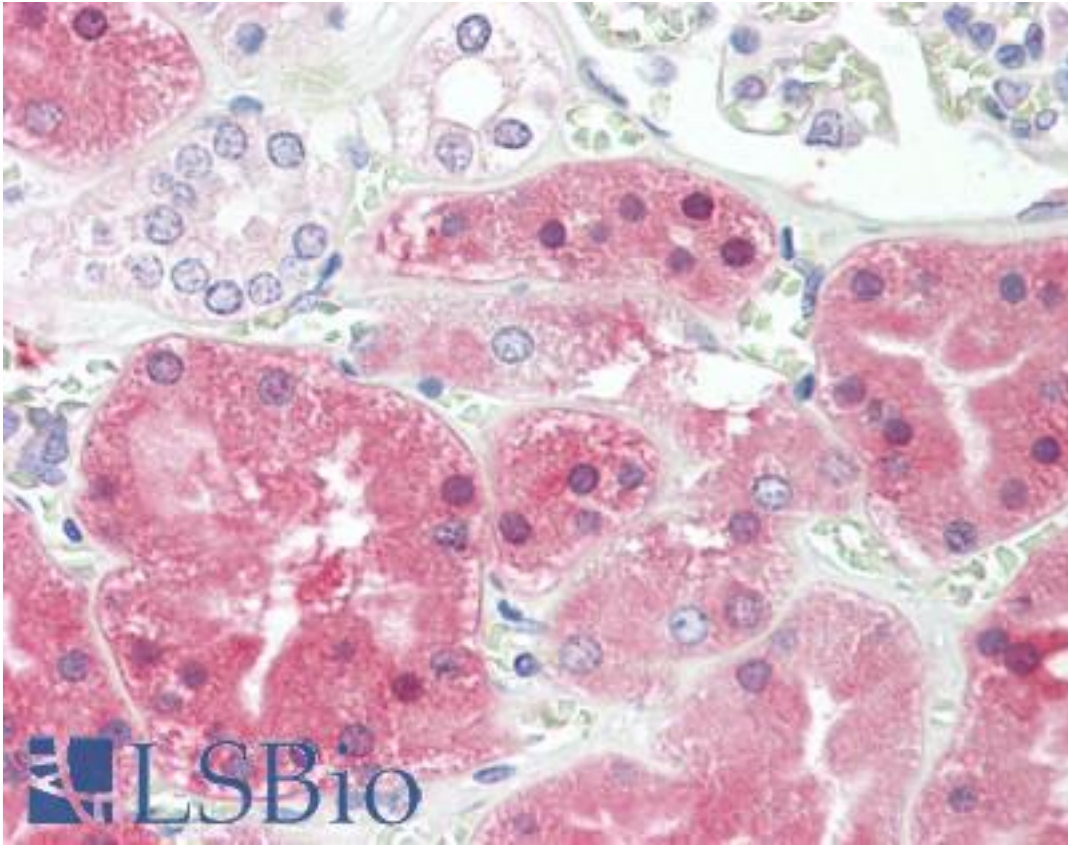


PH / PAH Goat anti-Human Polyclonal (Internal) Antibody - LS-B9223 - LSBio	
CatalogID:	LS-B9223
Validation:	This antibody replaces catalog number LS-C139643. It has been validated for use in the following assays: IHC-P.
Target:	phenylalanine hydroxylase (PAH)
Synonyms:	PAH Antibody, Phe-4-monoxygenase Antibody, PKU1 Antibody, PH Antibody, Phenylalanine 4-monoxygenase Antibody, Phe-4- monoxygenase Antibody, Phenylalanine hydroxylase Antibody, Phenylalanine-4-hydroxylase Antibody, PKU Antibody
Host	PAH antibody was produced in Goat
Clonality:	Polyclonal
Immunogen Species:	PH / PAH antibody was raised against Human
Antigen Type:	Synthetic peptide
Immunogen:	PH / PAH antibody was raised against synthetic peptide C-ESRPSRLKKDE from an internal region of human PAH / Phenylalanine Hydroxylase (NP_000268.1). Percent identity by BLAST analysis: Human, Gorilla, Orangutan, Gibbon, Monkey, Marmoset, Elephant, Panda, Dog, Bat, Horse, Rabbit (100%); Mouse, Rat, Bovine, Turkey, Chicken, Lizard, Xenopus (91%); Hamster, Opossum, Platypus, Drosophila, Nematode (82%).
Specificity:	Human PAH / Phenylalanine Hydroxylase.
Epitope:	Internal
Reactivity:	Human, Gorilla, Orangutan, Gibbon, Monkey, Bat, Dog, Horse, Rabbit
Predicted Reactivity:	Mouse, Rat, Bovine, Chicken, Xenopus
Purification:	Immunoaffinity purified
Presentation:	Tris-buffered saline, pH 7.3, 0.5% BSA, 0.02% sodium azide
Recommended Storage:	Store at -20°C. Minimize freezing and thawing.
Usage Summary:	Peptide ELISA: antibody detection limit dilution 1:32000. Western blot: Approx 48kD band observed in Human Liver lysates (calculated MW of 51.9kD according to NP_000268.1). Recommended concentration: 0.3-1 ug/ml.
Uses:	IHC - Paraffin (3.75 µg/ml), Western blot (0.1 - 0.3 µg/ml), ELISA (1:32000) (Optimal dilution to be determined by the researcher)
Size:	50 µg
Concentration:	0.5 mg/ml

Immunohistochemistry Image:



Human Kidney: Formalin-Fixed, Paraffin-Embedded (FFPE)

Western Blot Image:



PAH antibody (0.3 ug/ml) staining of Human Liver lysate (35 ug protein/ml in RIPA buffer). Primary incubation was 1 hour. Detected by chemiluminescence.

Requested From:

Japan

Laboratory Reagent For In Vitro Research Use Only

Not for resale without prior written consent from LifeSpan BioSciences, Inc.

Created on 9/24/2014

© 2014 LifeSpan BioSciences