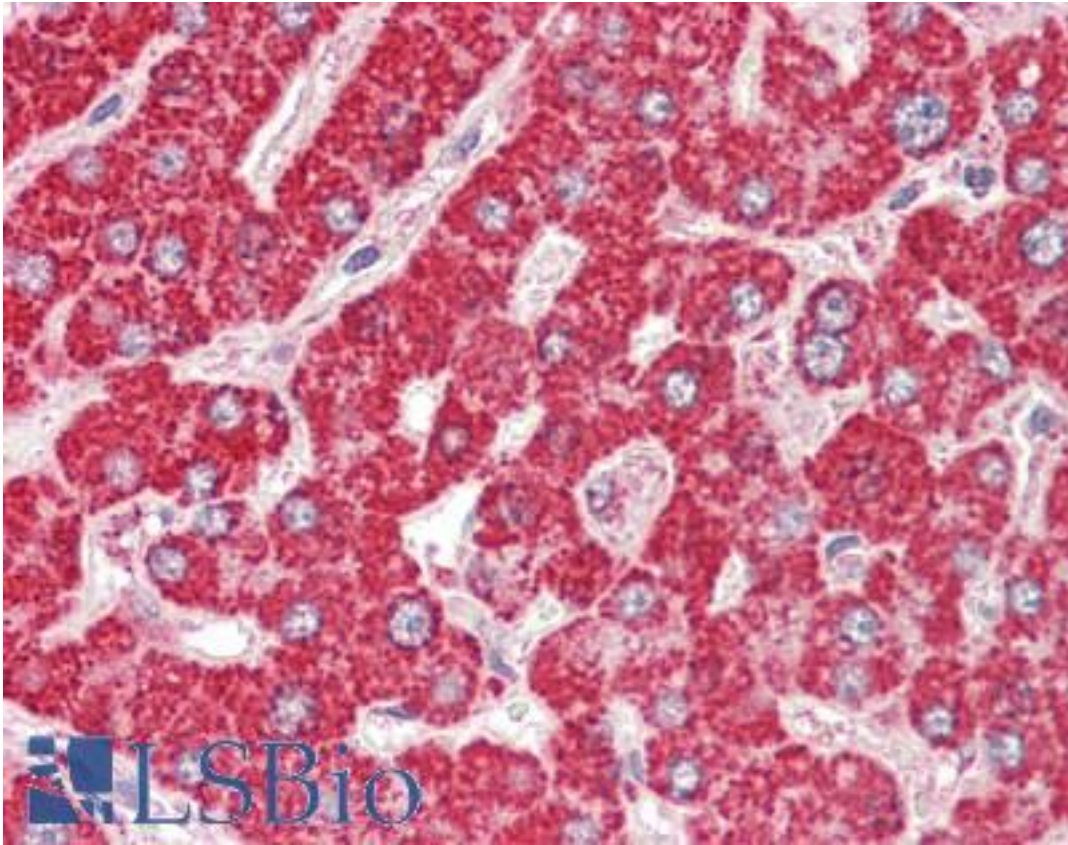


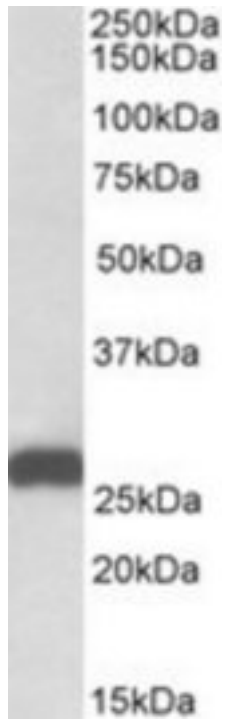
ETFB Goat anti-Human Polyclonal (aa 231-243) Antibody - LS-B9220 - LSBio	
CatalogID:	LS-B9220
Validation:	This antibody replaces catalog number LS-C139564. It has been validated for use in the following assays: IHC-P.
Target:	electron-transfer-flavoprotein, beta polypeptide (ETFB)
Synonyms:	ETFB Antibody, FP585 Antibody, Beta-ETF Antibody
Host	ETFB antibody was produced in Goat
Clonality:	Polyclonal
Immunogen Species:	ETFB antibody was raised against Human
Antigen Type:	Synthetic peptide
Immunogen:	ETFB antibody was raised against synthetic peptide C-PQRTAGVKVETTE from the C-terminus of human ETFB (NP_001976.1; NP_001014763.1). Percent identity by BLAST analysis: Human, Gorilla, Orangutan, Monkey, Bat, Bovine, Rabbit (100%); Marmoset, Mouse, Rat, Hamster, Panda, Horse, Pig (92%); Elephant, Dog, Xenopus (85%).
Specificity:	Human ETFB. This antibody is expected to recognize both reported isoforms (NP_001976.1; NP_001014763.1). Amino acid numbering in the name above refers to NP_001976.1).
Epitope:	aa 231-243
Reactivity:	Human, Gorilla, Orangutan, Mouse, Bat, Bovine, Rabbit
Predicted Reactivity:	Monkey, Rat, Hamster, Horse, Pig
Purification:	Immunoaffinity purified
Presentation:	Tris-buffered saline, pH 7.3, 0.5% BSA, 0.02% sodium azide
Recommended Storage:	Store at -20°C. Minimize freezing and thawing.
Usage Summary:	Peptide ELISA: antibody detection limit dilution 1:8000. Western blot: Approx 26kD band observed in Human, Mouse and Rat Liver lysates (calculated MW of 27.8kD according to NP_001976.1). Recommended concentration: 0.01-0.03 ug/ml.
Uses:	IHC - Paraffin (3.75 µg/ml), Western blot (0.01 - 0.03 µg/ml), ELISA (1:8000) (Optimal dilution to be determined by the researcher)
Size:	50 µg
Concentration:	0.5 mg/ml

Immunohistochemistry Image:



Human Liver: Formalin-Fixed, Paraffin-Embedded (FFPE)

Western Blot Image:



ETFB antibody (0.01 ug/ml) staining of Mouse Liver lysate (35 ug protein/ml in RIPA buffer). Primary incubation was 1 hour. Detected by chemiluminescence.

Requested From:

Japan

Laboratory Reagent For In Vitro Research Use Only

Not for resale without prior written consent from LifeSpan BioSciences, Inc.

Created on 9/24/2014

© 2014 LifeSpan BioSciences