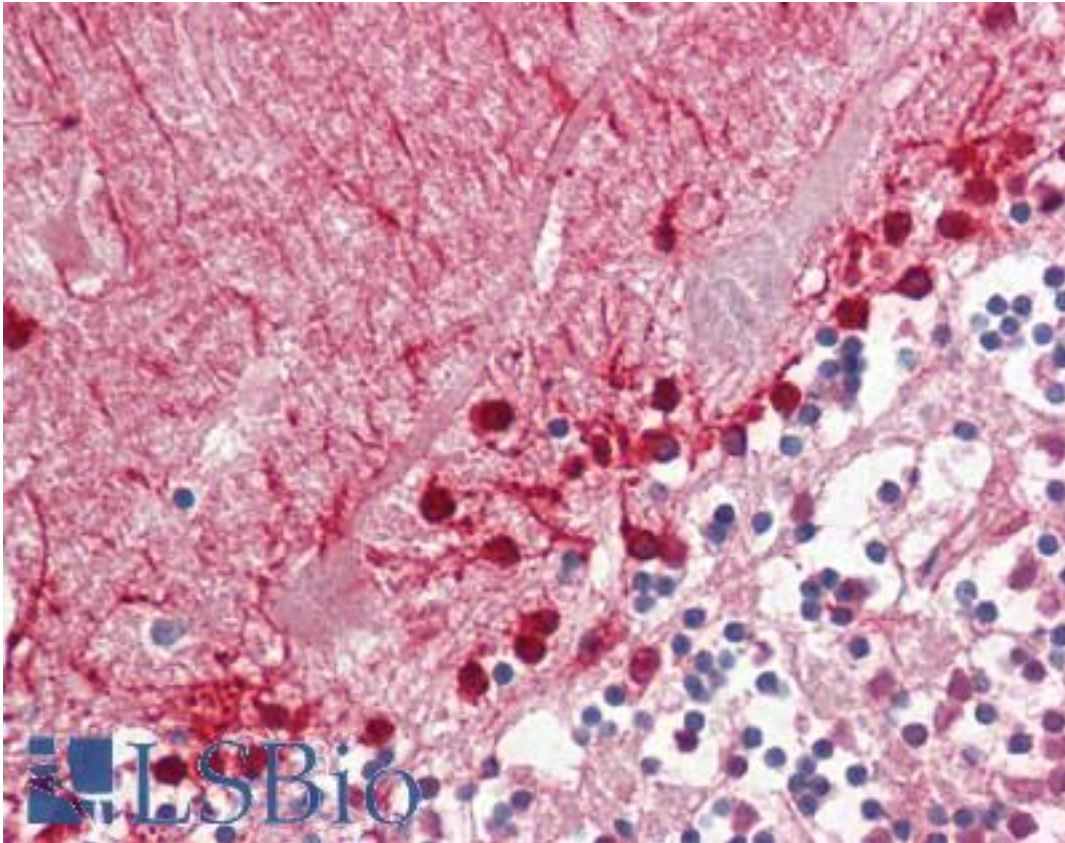


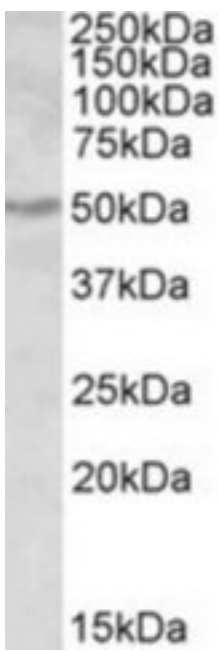
ALDH9A1 Goat anti-Human Polyclonal (Internal) Antibody - LS-B9218 - LSBio	
<b>CatalogID:</b>	LS-B9218
<b>Validation:</b>	This antibody replaces catalog number LS-C113025. It has been validated for use in the following assays: IHC-P.
<b>Target:</b>	aldehyde dehydrogenase 9 family, member A1 (ALDH9A1)
<b>Synonyms:</b>	ALDH9A1 Antibody, ALDH9 Antibody, ALDH7 Antibody, E3 Antibody, Aldehyde dehydrogenase (NAD+) Antibody, ALDH4 Antibody, TMABADH Antibody
<b>Host</b>	ALDH9A1 antibody was produced in Goat
<b>Clonality:</b>	Polyclonal
<b>Immunogen Species:</b>	ALDH9A1 antibody was raised against Human
<b>Antigen Type:</b>	Synthetic peptide
<b>Immunogen:</b>	ALDH9A1 antibody was raised against synthetic peptide C-QKEILDKFTEEVVKQ from an internal region of human ALDH9A1 (NP_000687.3). Percent identity by BLAST analysis: Human, Orangutan, Gibbon, Monkey, Marmoset, Elephant, Horse, Pig (100%); Hamster, Bovine, Rabbit, Opossum (93%); Bat (87%); Mouse, Panda (80%).
<b>Specificity:</b>	Human ALDH9A1.
<b>Epitope:</b>	Internal
<b>Reactivity:</b>	Human, Orangutan, Gibbon, Monkey, Horse, Pig
<b>Predicted Reactivity:</b>	Bovine, Hamster, Rabbit
<b>Purification:</b>	Immunoaffinity purified
<b>Presentation:</b>	Tris-buffered saline, pH 7.3, 0.5% BSA, 0.02% sodium azide
<b>Recommended Storage:</b>	Store at -20°C. Minimize freezing and thawing.
<b>Usage Summary:</b>	Peptide ELISA: antibody detection limit dilution 1:16000. Western blot: Approx 50kDa band observed in Human Kidney and Liver lysates (calculated MW of 56.3kDa according to NP_000687.3). The observed molecular weight corresponds to earlier findings with different antibodies from other commercial sources. Recommended concentration: 0.3-1 ug/ml.
<b>Uses:</b>	IHC - Paraffin (3.75 µg/ml), Western blot (0.3 - 1 µg/ml), ELISA (1:16000) (Optimal dilution to be determined by the researcher)
<b>Size:</b>	50 µg
<b>Concentration:</b>	0.5 mg/ml

**Immunohistochemistry Image:**



Human Brain, Cerebellum: Formalin-Fixed, Paraffin-Embedded (FFPE)

**Western Blot Image:**



ALDH9A1 antibody (0.3 ug/ml) staining of Human Kidney lysate (35 ug protein/ml in RIPA buffer). Primary incubation was 1 hour. Detected by chemiluminescence.

<b>Requested From:</b>	Japan
Laboratory Reagent For In Vitro Research Use Only	
Not for resale without prior written consent from LifeSpan BioSciences, Inc.	
Created on 9/24/2014	
© 2014 LifeSpan BioSciences	