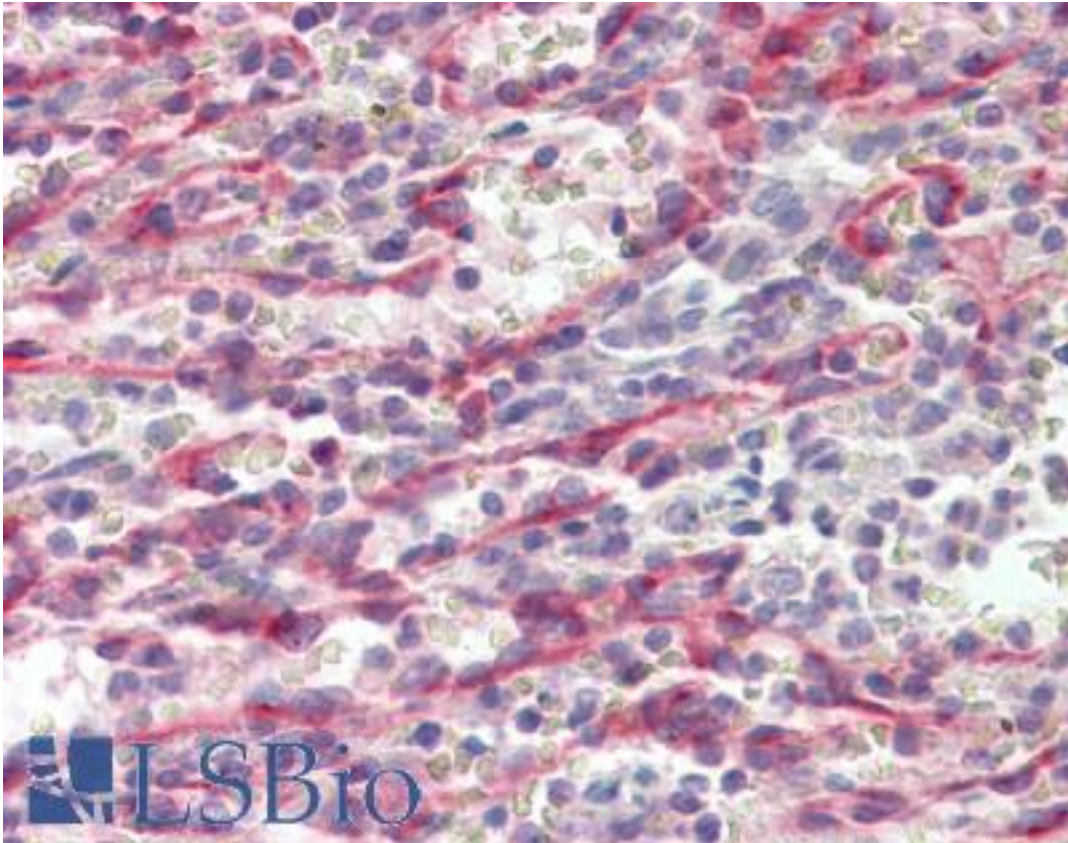


STAB1 Goat anti-Human Polyclonal (C-Terminus) Antibody - LS-B9216 - LSBio

CatalogID:	LS-B9216
Validation:	This antibody replaces catalog number LS-C112938. It has been validated for use in the following assays: IHC-P.
Target:	stabilin 1 (STAB1)
Synonyms:	STAB1 Antibody, FEEL-1 Antibody, KIAA0246 Antibody, FELE-1 Antibody, MS-1 antigen Antibody, STAB-1 Antibody, Stabilin 1 Antibody, Stabilin-1 Antibody, CLEVER-1 Antibody, FEEL1 Antibody, FEX1 Antibody
Host	STAB1 antibody was produced in Goat
Clonality:	Polyclonal
Immunogen Species:	STAB1 antibody was raised against Human
Antigen Type:	Synthetic peptide
Immunogen:	STAB1 antibody was raised against synthetic peptide C-DFPDTQRILTVK from the C-terminus of human STAB1 (NP_055951.2). Percent identity by BLAST analysis: Human, Gorilla, Gibbon, Monkey, Marmoset (100%); Elephant, Panda, Bovine, Dog, Horse, Pig (92%); Mouse, Rat, Bat, Rabbit, Verticillium (83%).
Specificity:	Human STAB1.
Epitope:	C-Terminus
Reactivity:	Human, Gorilla, Gibbon, Monkey
Predicted Reactivity:	Bovine, Dog, Horse, Pig
Purification:	Immunoaffinity purified
Presentation:	Tris-buffered saline, pH 7.3, 0.5% BSA, 0.02% sodium azide
Recommended Storage:	Store at -20°C. Minimize freezing and thawing.
Usage Summary:	Peptide ELISA: antibody detection limit dilution 1:8000. Western blot: Not yet tested - our routinely used western blotting protocol does not allow detection of proteins as large as the calculated size of 275kDa according to NP_055951.2. Therefore we cannot recommend an optimal concentration and the antibody is an aspirin
Uses:	IHC - Paraffin (3.75 µg/ml), ELISA (1:8000) (Optimal dilution to be determined by the researcher)
Size:	50 µg
Concentration:	0.5 mg/ml

Immunohistochemistry Image:



Human Spleen: Formalin-Fixed, Paraffin-Embedded (FFPE)

Requested From:

Japan

Laboratory Reagent For In Vitro Research Use Only

Not for resale without prior written consent from LifeSpan BioSciences, Inc.

Created on 9/24/2014

© 2014 LifeSpan BioSciences