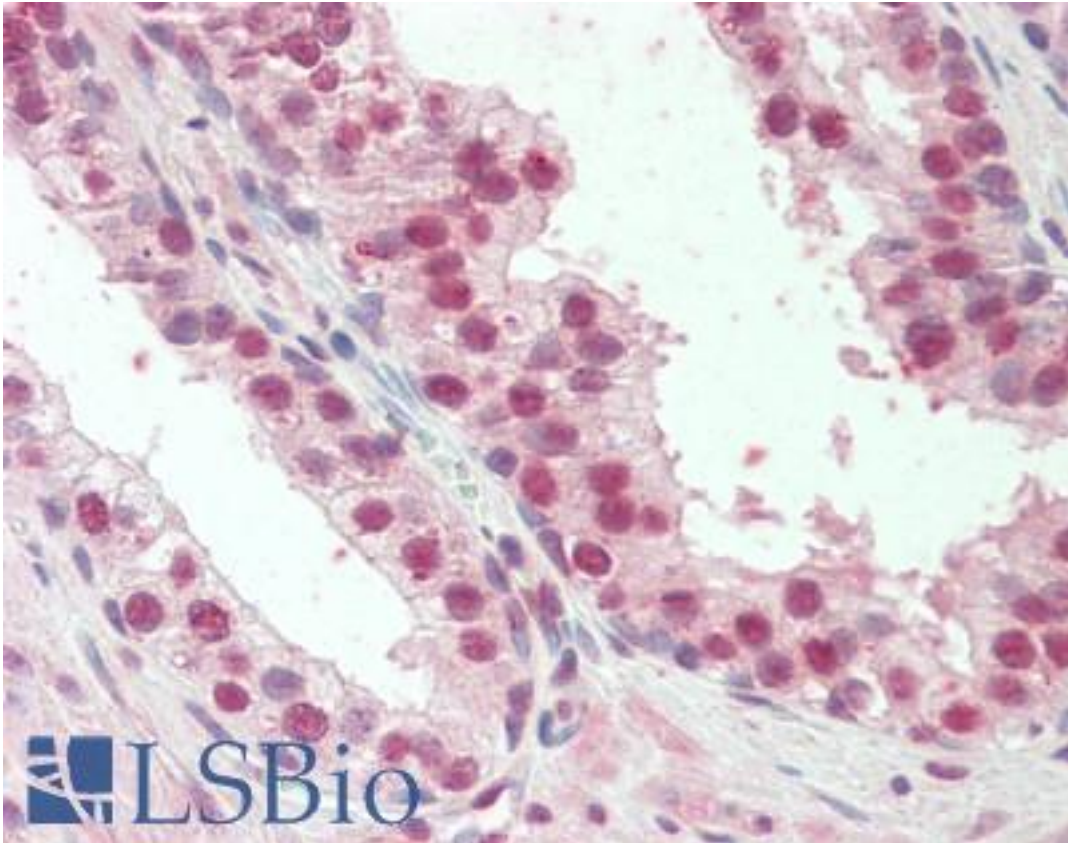


HOXD13 Goat anti-Human Polyclonal (Internal) Antibody - LS-B9215 - LSBio	
CatalogID:	LS-B9215
Validation:	This antibody replaces catalog number LS-C112923. It has been validated for use in the following assays: IHC-P.
Target:	homeobox D13 (HOXD13)
Synonyms:	HOXD13 Antibody, Homeo box 4l Antibody, Homeobox D13 Antibody, Homeobox protein Hox-4l Antibody, Homeobox protein Hox-D13 Antibody, Homeo box D13 Antibody, SPD Antibody, BDE Antibody, BDS D Antibody, HOX4l Antibody
Host	HOXD13 antibody was produced in Goat
Clonality:	Polyclonal
Immunogen Species:	HOXD13 antibody was raised against Human
Antigen Type:	Synthetic peptide
Immunogen:	HOXD13 antibody was raised against synthetic peptide C-KSSFPGDVALNQP D from an internal region of human HOXD13 (NP_000514.2). Percent identity by BLAST analysis: Human, Gibbon, Monkey, Marmoset, Mouse, Rat, Hamster, Elephant, Panda, Bovine, Bat, Horse, Pig, Opossum (100%); Chicken, Platypus, Xenopus (93%).
Specificity:	Human HOXD13.
Epitope:	Internal
Reactivity:	Human, Gibbon, Monkey, Mouse, Rat, Bat, Bovine, Hamster, Horse, Pig
Predicted Reactivity:	Chicken, Xenopus
Purification:	Immunoaffinity purified
Presentation:	Tris-buffered saline, pH 7.3, 0.5% BSA, 0.02% sodium azide
Recommended Storage:	Store at -20°C. Minimize freezing and thawing.
Usage Summary:	Peptide ELISA: antibody detection limit dilution 1:8000. Western blot: Preliminary experiments in Human Breast cancer lysates gave no specific signal but low background (at antibody concentration up to 1 ug/ml).
Uses:	IHC - Paraffin (3.75 µg/ml), ELISA (1:8000) (Optimal dilution to be determined by the researcher)
Size:	50 µg
Concentration:	0.5 mg/ml

Immunohistochemistry Image:



Human Prostate: Formalin-Fixed, Paraffin-Embedded (FFPE)

Requested From:

Japan

Laboratory Reagent For In Vitro Research Use Only

Not for resale without prior written consent from LifeSpan BioSciences, Inc.

Created on 9/24/2014

© 2014 LifeSpan BioSciences