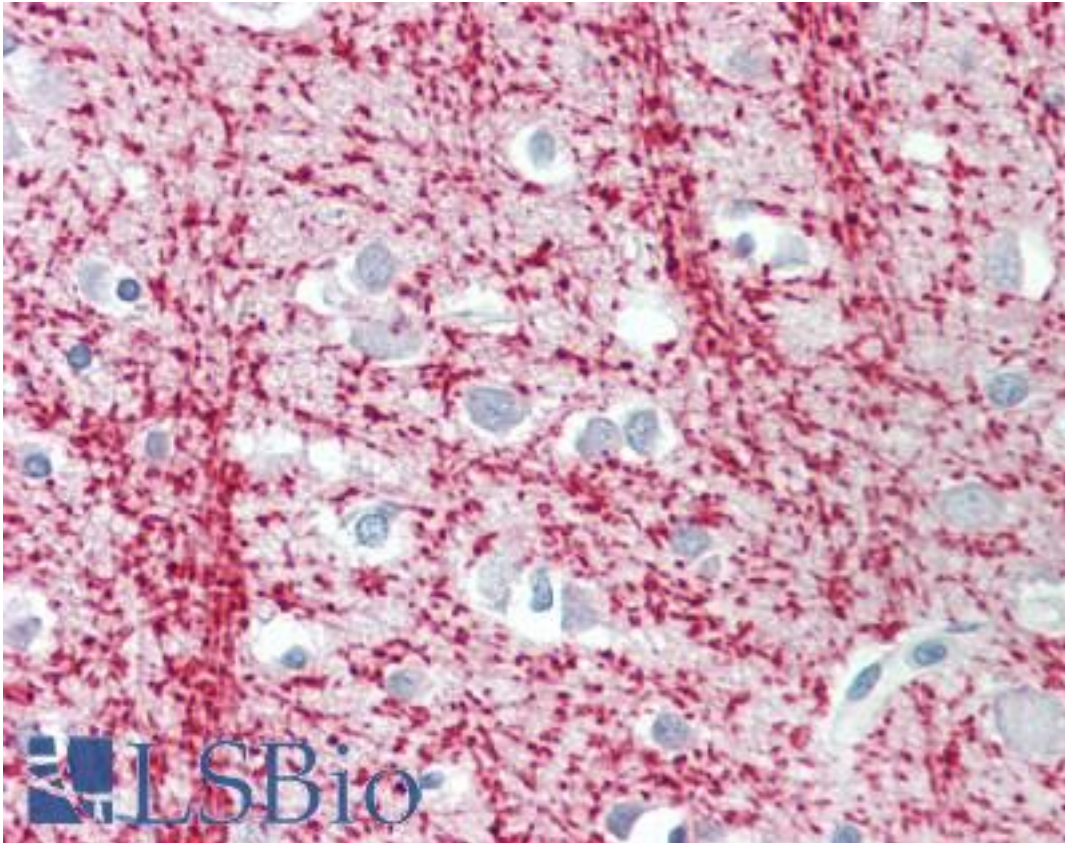


TPPP Goat anti-Human Polyclonal (Internal) Antibody - LS-B9213 - LSBio

<b>CatalogID:</b>	LS-B9213
<b>Validation:</b>	This antibody replaces catalog number LS-C139578. It has been validated for use in the following assays: IHC-P.
<b>Target:</b>	tubulin polymerization promoting protein (TPPP)
<b>Synonyms:</b>	TPPP Antibody, 25 kDa brain-specific protein Antibody, p25-alpha Antibody, p25 Antibody, p25alpha Antibody, p24 Antibody, TPPP1 Antibody
<b>Host</b>	TPPP antibody was produced in Goat
<b>Clonality:</b>	Polyclonal
<b>Immunogen Species:</b>	TPPP antibody was raised against Human
<b>Antigen Type:</b>	Synthetic peptide
<b>Immunogen:</b>	TPPP antibody was raised against synthetic peptide C-DPSKDRAAKRLSLES from an internal region of human TPPP (NP_008961.1). Percent identity by BLAST analysis: Human, Gorilla, Monkey, Marmoset (100%); Dog (93%); Panda, Pig (87%); Mouse, Rat, Hamster, Bat (80%).
<b>Specificity:</b>	Human TPPP.
<b>Epitope:</b>	Internal
<b>Reactivity:</b>	Human, Gorilla, Monkey
<b>Predicted Reactivity:</b>	Dog
<b>Purification:</b>	Immunoaffinity purified
<b>Presentation:</b>	Tris-buffered saline, pH 7.3, 0.5% BSA, 0.02% sodium azide
<b>Recommended Storage:</b>	Store at -20°C. Minimize freezing and thawing.
<b>Usage Summary:</b>	Peptide ELISA: antibody detection limit dilution 1:32000. Western blot: Approx 26kD band observed in Human Brain (Cerebellum), Mouse and Rat Brain lysates (calculated MW of 23.7kD according to NP_008961.1). The observed molecular weight corresponds to earlier findings in literature with different antibodies (Acevedo et al, Exp Cell Res. 2007 Dec 10;313(20):4091-106; PMID: 18028908). Recommended concentration: 0.001-0.01 ug/ml. An additional band of unknown identity was also consistently observed at 17kD. This band was successfully blocked by incubation with the immunizing peptide.
<b>Uses:</b>	IHC - Paraffin (3.75 µg/ml), Western blot (0.00 - 0.01 µg/ml), ELISA (1:32000) (Optimal dilution to be determined by the researcher)
<b>Size:</b>	50 µg
<b>Concentration:</b>	0.5 mg/ml

**Immunohistochemistry Image:**



Human Brain, Cortex: Formalin-Fixed, Paraffin-Embedded (FFPE)

**Western Blot Image:**



TPPP antibody (0.001 ug/ml) staining of Human Cerebellum lysate (35 ug protein/ml in RIPA buffer). Primary incubation was 1 hour. Detected by chemiluminescence.

<b>Requested From:</b>	Japan
Laboratory Reagent For In Vitro Research Use Only	
Not for resale without prior written consent from LifeSpan BioSciences, Inc.	
Created on 9/24/2014	
© 2014 LifeSpan BioSciences	