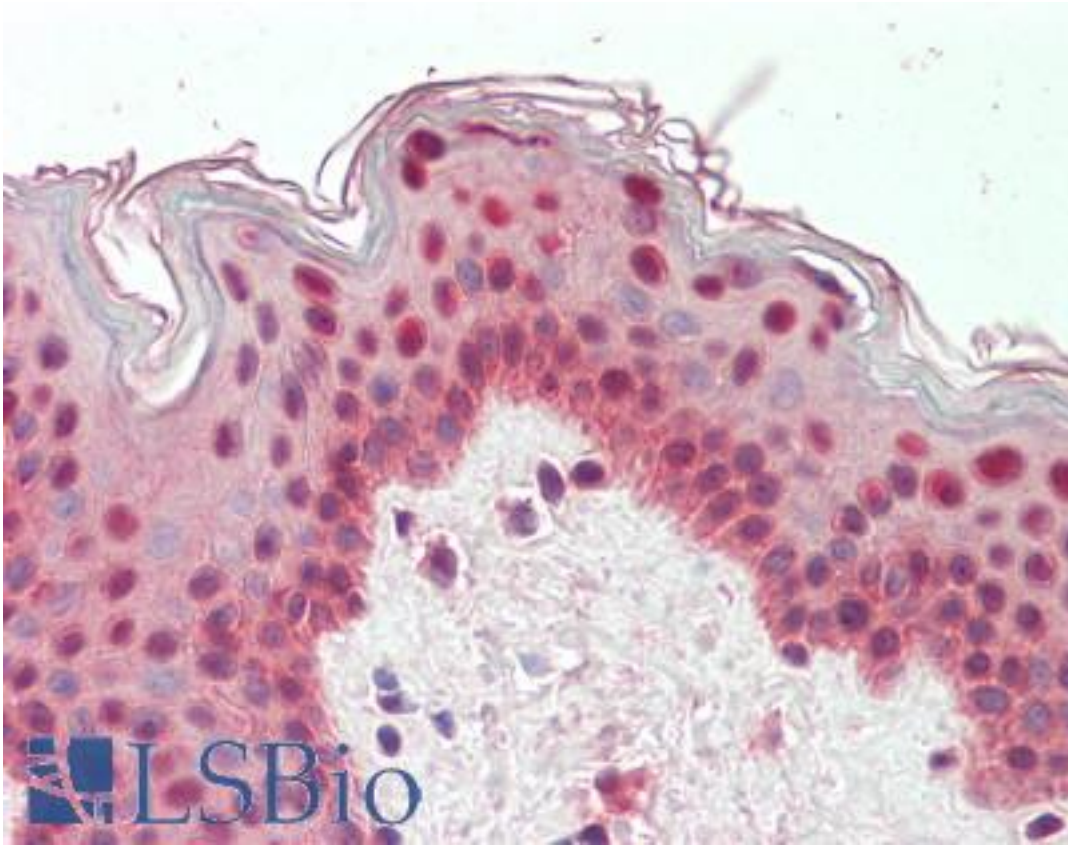


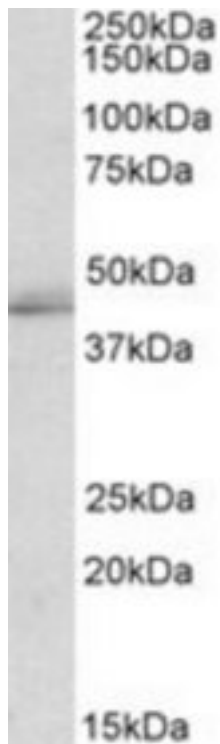
TIAL1 / TIAR Goat anti-Human Polyclonal (Internal) Antibody - LS-B9211 - LSBio	
CatalogID:	LS-B9211
Validation:	This antibody replaces catalog number LS-C139577. It has been validated for use in the following assays: IHC-P.
Target:	TIA1 cytotoxic granule-associated RNA binding protein-like 1 (TIAL1)
Synonyms:	TIAL1 Antibody, TCBP Antibody, TIA-1-related protein Antibody, TIAR Antibody, T-cluster binding protein Antibody, Nucleolysin TIAR Antibody, TIA-1-related nucleolysin Antibody
Host	TIAL1 antibody was produced in Goat
Clonality:	Polyclonal
Immunogen Species:	TIAL1 / TIAR antibody was raised against Human
Antigen Type:	Synthetic peptide
Immunogen:	TIAL1 / TIAR antibody was raised against synthetic peptide C-SPEITTEDIKSAFAP from an internal region of human TIAL1 (NP_003243.1; NP_001029097.1). Percent identity by BLAST analysis: Human, Gorilla, Gibbon, Monkey, Marmoset, Mouse, Rat, Hamster, Elephant, Panda, Dog, Bovine, Bat, Horse, Rabbit, Pig, Opossum, Turkey, Chicken, Platypus, Lizard, Xenopus (100%); Salmon (93%).
Specificity:	Human TIAL1. This antibody is expected to recognize both isoforms (NP_003243.1; NP_001029097.1).
Epitope:	Internal
Reactivity:	Human, Gorilla, Gibbon, Monkey, Mouse, Rat, Bat, Bovine, Dog, Hamster, Horse, Pig, Rabbit, Chicken, Xenopus
Purification:	Immunoaffinity purified
Presentation:	Tris-buffered saline, pH 7.3, 0.5% BSA, 0.02% sodium azide
Recommended Storage:	Store at -20°C. Minimize freezing and thawing.
Usage Summary:	Peptide ELISA: antibody detection limit dilution 1:64000. Western blot: Approx 45kD band observed in lysates of cell line K562 (calculated MW of 43.4kD according to NP_001029097.1). Recommended concentration: 1-3 ug/ml.
Uses:	IHC - Paraffin (3.75 µg/ml), Western blot (1 - 3 µg/ml), ELISA (1:64000) (Optimal dilution to be determined by the researcher)
Size:	50 µg
Concentration:	0.5 mg/ml

Immunohistochemistry Image:



Human Skin: Formalin-Fixed, Paraffin-Embedded (FFPE)

Western Blot Image:



TIAL1 antibody (2 ug/ml) staining of K562 lysate (35 ug protein/ml in RIPA buffer). Primary incubation was 1 hour. Detected by chemiluminescence.

Requested From:

Japan

Laboratory Reagent For In Vitro Research Use Only

Not for resale without prior written consent from LifeSpan BioSciences, Inc.

Created on 9/24/2014

© 2014 LifeSpan BioSciences