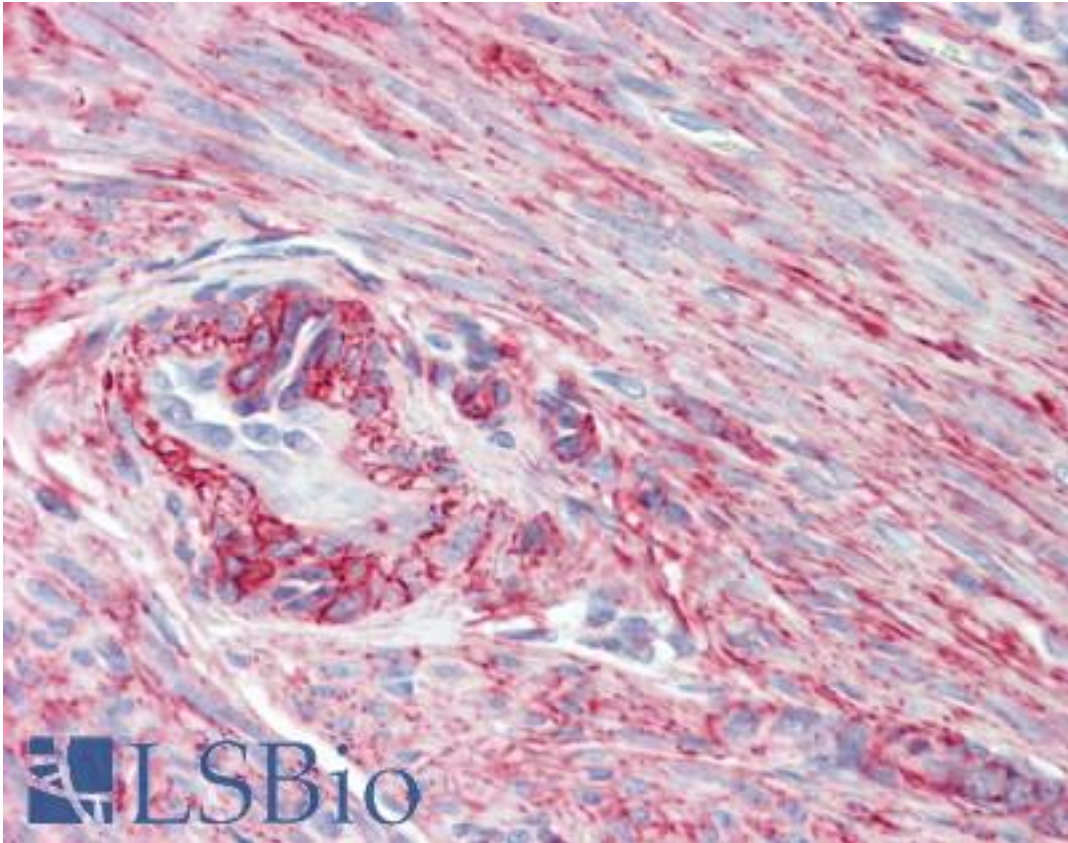


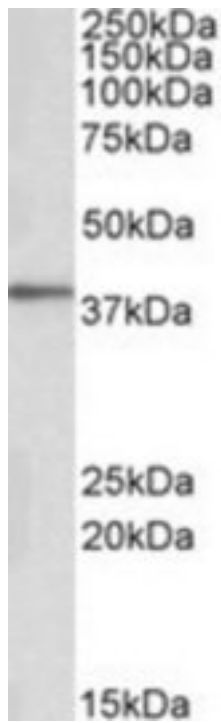
PRKCDBP / CAVIN3 Goat anti-Human Polyclonal (Internal) Antibody - LS-B9207 - LSBio	
CatalogID:	LS-B9207
Validation:	This antibody replaces catalog number LS-C112838. It has been validated for use in the following assays: IHC-P.
Target:	protein kinase C, delta binding protein (PRKCDBP)
Synonyms:	PRKCDBP Antibody, CAVIN3 Antibody, HSRBC Antibody, SRBC Antibody, Cavin-3 Antibody
Host	PRKCDBP antibody was produced in Goat
Clonality:	Polyclonal
Immunogen Species:	PRKCDBP / CAVIN3 antibody was raised against Human
Antigen Type:	Synthetic peptide
Immunogen:	PRKCDBP / CAVIN3 antibody was raised against synthetic peptide C-RRTGLQKVQSLR from an internal region of human PRKCDBP (NP_659477.2). Percent identity by BLAST analysis: Human, Gorilla, Gibbon, Monkey, Hamster, Panda, Dog, Horse, Pig, Opossum (100%); Mouse, Rat, Elephant, Bat, Bovine, Rabbit (92%); Drosophila (83%).
Specificity:	Human PRKCDBP.
Epitope:	Internal
Reactivity:	Human, Gorilla, Gibbon, Monkey, Dog, Hamster, Horse, Pig
Predicted Reactivity:	Mouse, Rat, Bat, Bovine, Rabbit
Purification:	Immunoaffinity purified
Presentation:	Tris-buffered saline, pH 7.3, 0.5% BSA, 0.02% sodium azide
Recommended Storage:	Store at -20°C. Minimize freezing and thawing.
Usage Summary:	Peptide ELISA: antibody detection limit dilution 1:32000. Western blot: Approx 38kDa band observed in Human Adipose and NIH3T3 lysates (calculated MW of 27.7kDa according to Human NP_659477.2 and 27.8kDa according to Mouse NP_082720.1). The observed molecular weight corresponds to earlier findings in literature with different antibodies (Bastiani M, J Cell Biol. 2009 Jun 29;185(7):1259-73. PMID: 19546242). Recommended concentration: 0.1-1 ug/ml.
Uses:	IHC - Paraffin (3.75 µg/ml), Western blot (0.1 - 1 µg/ml), ELISA (1:32000) (Optimal dilution to be determined by the researcher)
Size:	50 µg
Concentration:	0.5 mg/ml

Immunohistochemistry Image:



Human Uterus, Myometrium: Formalin-Fixed, Paraffin-Embedded (FFPE)

Western Blot Image:



PRKCDBP antibody (0.1 ug/ml) staining of Human Adipose cell lysate (35 ug protein/ml in RIPA buffer). Primary incubation was 1 hour. Detected by chemiluminescence.

Requested From:

Japan

Laboratory Reagent For In Vitro Research Use Only

Not for resale without prior written consent from LifeSpan BioSciences, Inc.

Created on 9/24/2014

© 2014 LifeSpan BioSciences