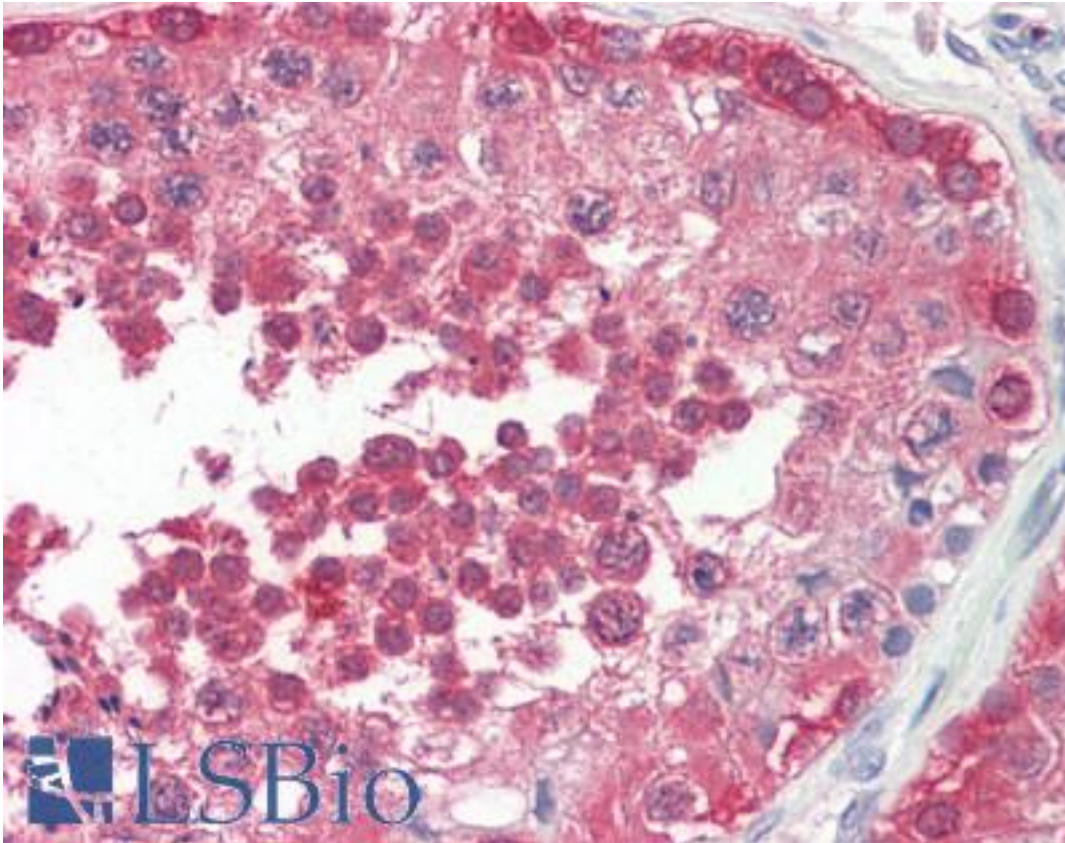


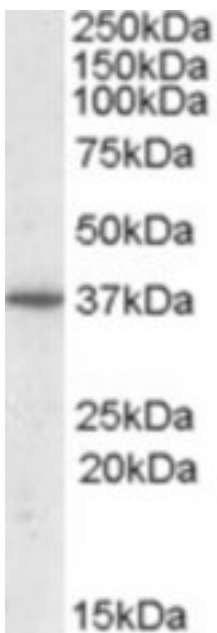
PPP2R4 Goat anti-Human Polyclonal Antibody - LS-B9204 - LSBio	
<b>CatalogID:</b>	LS-B9204
<b>Validation:</b>	This antibody replaces catalog number LS-C101317. It has been validated for use in the following assays: IHC-P.
<b>Target:</b>	protein phosphatase 2A activator, regulatory subunit 4 (PPP2R4)
<b>Synonyms:</b>	PPP2R4 Antibody, PP2A phosphatase activator Antibody, PP2A subunit B isoform PR53 Antibody, PTPA Antibody, PP2A Antibody, PP2A, subunit B, PR53 isoform Antibody, PR53 Antibody
<b>Host</b>	PPP2R4 antibody was produced in Goat
<b>Clonality:</b>	Polyclonal
<b>Immunogen Species:</b>	PPP2R4 antibody was raised against Human
<b>Antigen Type:</b>	Synthetic peptide
<b>Immunogen:</b>	PPP2R4 antibody was raised against synthetic peptide C-GSLLPIHPVTSG from the C-terminus of human PPP2R4 (NP_821068.1; NP_066954.2; NP_821070.1). Percent identity by BLAST analysis: Human, Orangutan, Gibbon, Baboon, Monkey, Galago, Marmoset, Mouse, Rat, Hamster, Rabbit (100%); Panda, Dog, Horse (92%); Bovine, Pig, Opossum, Turkey, Chicken, Armadillo (83%).
<b>Specificity:</b>	Human PPP2R4. This antibody is expected to recognize all reported isoforms (NP_821068.1; NP_066954.2; NP_821070.1). Reported variants NP_066954.2 and NP_821067.1 represent identical protein.
<b>Reactivity:</b>	Human, Orangutan, Gibbon, Monkey, Mouse, Rat, Hamster, Rabbit
<b>Predicted Reactivity:</b>	Dog, Horse
<b>Purification:</b>	Immunoaffinity purified
<b>Presentation:</b>	Tris-buffered saline, pH 7.3, 0.5% BSA, 0.02% sodium azide
<b>Recommended Storage:</b>	Store at -20°C. Minimize freezing and thawing.
<b>Usage Summary:</b>	Approx 37kDa band observed in Human Liver lysates and in lysates of cell line HepG2 (calculated MW of 36.8kDa according to NP_066954.2). Western blot tested in human, mouse, and rat liver.
<b>Uses:</b>	IHC - Paraffin (3.75 µg/ml), Western blot (0.5 - 2 µg/ml), ELISA (1:32000) (Optimal dilution to be determined by the researcher)
<b>Size:</b>	50 µg
<b>Concentration:</b>	0.5 mg/ml

**Immunohistochemistry Image:**



Human Testis: Formalin-Fixed, Paraffin-Embedded (FFPE)

**Western Blot Image:**



Antibody (0.5 ug/ml) staining of Human Liver lysate (35 ug protein in RIPA buffer). Primary incubation was 1 hour. Detected by chemiluminescence.

Requested From:

Japan

Laboratory Reagent For In Vitro Research Use Only

Not for resale without prior written consent from LifeSpan BioSciences, Inc.

Created on 9/24/2014

© 2014 LifeSpan BioSciences