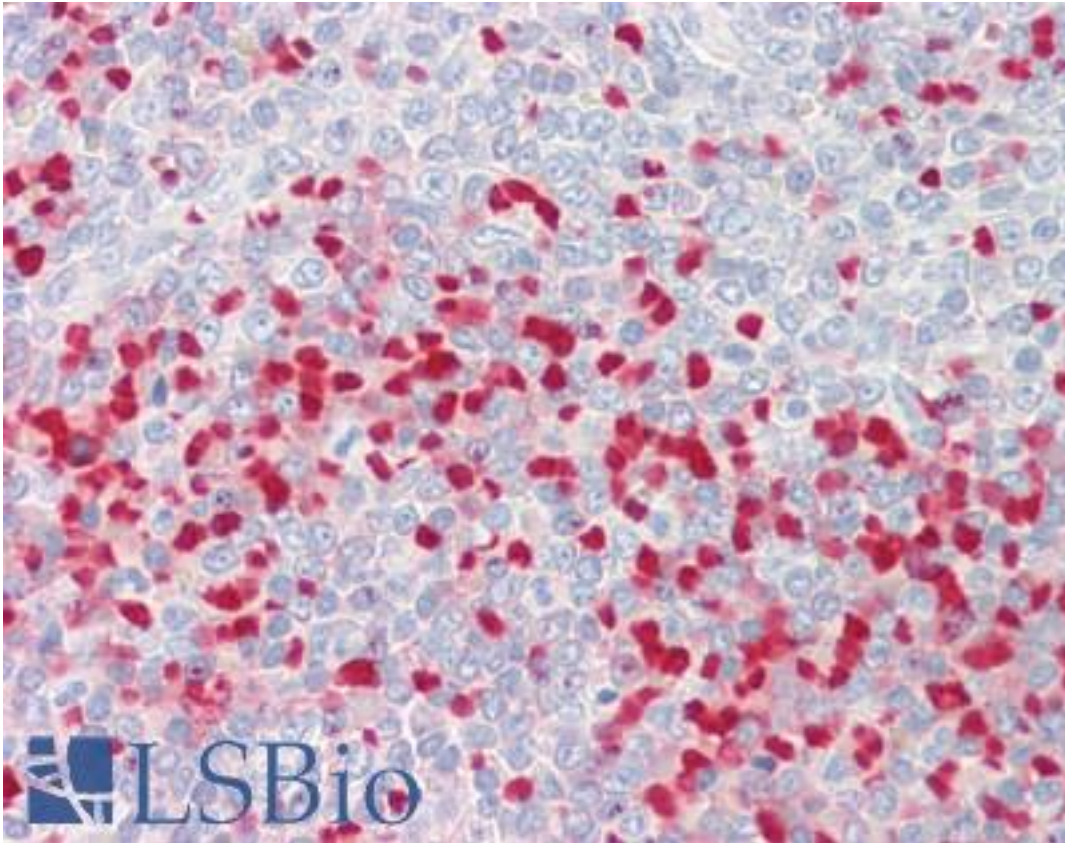


MTHFR Goat anti-Human Polyclonal (C-Terminus) Antibody - LS-B9203 - LSBio

CatalogID:	LS-B9203
Validation:	This antibody replaces catalog number LS-C112880. It has been validated for use in the following assays: IHC-P.
Target:	methylenetetrahydrofolate reductase (NAD(P)H) (MTHFR)
Synonyms:	MTHFR Antibody
Host	MTHFR antibody was produced in Goat
Clonality:	Polyclonal
Immunogen Species:	MTHFR antibody was raised against Human
Antigen Type:	Synthetic peptide
Immunogen:	MTHFR antibody was raised against synthetic peptide C-NRPTQNARETEAP from the C-terminus of human MTHFR (NP_005948.3). Percent identity by BLAST analysis: Human, Gorilla (100%); Monkey (92%).
Specificity:	Human MTHFR.
Epitope:	C-Terminus
Reactivity:	Human, Gorilla
Predicted Reactivity:	Monkey
Purification:	Immunoaffinity purified
Presentation:	Tris-buffered saline, pH 7.3, 0.5% BSA, 0.02% sodium azide
Recommended Storage:	Store at -20°C. Minimize freezing and thawing.
Usage Summary:	Peptide ELISA: antibody detection limit dilution 1:16000. Western blot: Preliminary experiments gave an approx 28kDa band in Human Brain (Cerebellum), Skeletal Muscle and Placenta lysates after 0.2 ug/ml antibody staining. Please note that currently we cannot find an explanation in the literature for the band we observe given the calculated size of 74.6kDa according to NP_005948.3. The 28kDa band was successfully blocked by incubation with the immunizing peptide.
Uses:	IHC - Paraffin (3.75 µg/ml), ELISA (1:16000) (Optimal dilution to be determined by the researcher)
Size:	50 µg
Concentration:	0.5 mg/ml

Immunohistochemistry Image:



Human Spleen: Formalin-Fixed, Paraffin-Embedded (FFPE)

Requested From:

Japan

Laboratory Reagent For In Vitro Research Use Only

Not for resale without prior written consent from LifeSpan BioSciences, Inc.

Created on 9/24/2014

© 2014 LifeSpan BioSciences