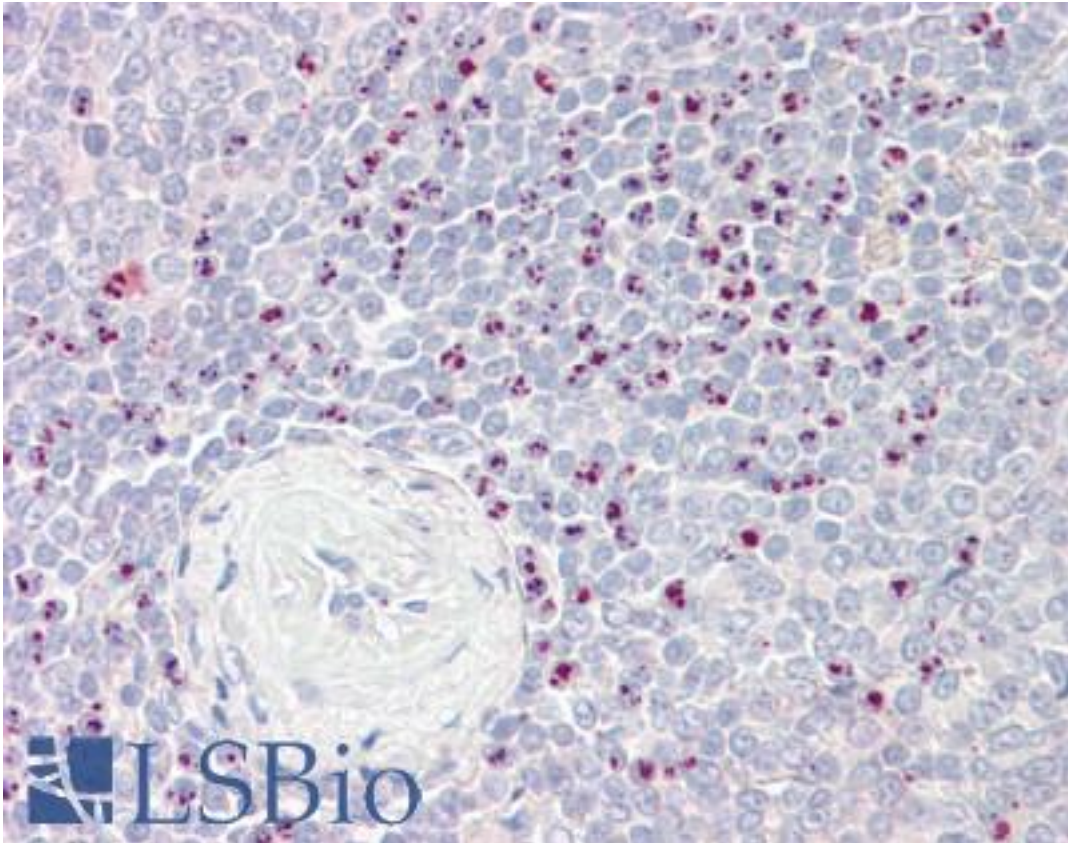


BAG6 / G3 / Scythe Goat anti-Human Polyclonal (Internal) Antibody - LS-B9202 - LSBio	
CatalogID:	LS-B9202
Validation:	This antibody replaces catalog number LS-C112774. It has been validated for use in the following assays: IHC-P.
Target:	BCL2-associated athanogene 6 (BAG6)
Synonyms:	BAG6 Antibody, BCL2-associated athanogene 6 Antibody, D6S52E Antibody, HLA -B associated transcript 3 Antibody, HLA-B-associated transcript 3 Antibody, HLA-B associated transcript-3 Antibody, G3 Antibody, Protein G3 Antibody, Protein Scythe Antibody, Scythe Antibody, BAG-6 Antibody, BAT3 Antibody
Host	BAG6 antibody was produced in Goat
Clonality:	Polyclonal
Immunogen Species:	BAG6 / G3 / Scythe antibody was raised against Human
Antigen Type:	Synthetic peptide
Immunogen:	BAG6 / G3 / Scythe antibody was raised against synthetic peptide C-PETNAPNHPSPAEY from an internal region of human BAG6 / BAT3 (NP_004630.3; NP_542433.1). Percent identity by BLAST analysis: Human, Gorilla, Gibbon, Monkey, Marmoset, Elephant, Panda, Dog, Bovine, Pig (100%); Mouse, Rat, Hamster, Bat, Horse (93%).
Specificity:	Human BAG6 / BAT3. This antibody is expected to recognize both reported isoforms (NP_004630.3; NP_542433.1). Reported variants representing identical protein: NP_542434.1, NP_001092004.1, NP_542433.1 (isoform b).
Epitope:	Internal
Reactivity:	Human, Gorilla, Gibbon, Monkey, Bovine, Dog, Pig
Predicted Reactivity:	Mouse, Rat, Bat, Hamster, Horse
Purification:	Immunoaffinity purified
Presentation:	Tris-buffered saline, pH 7.3, 0.5% BSA, 0.02% sodium azide
Recommended Storage:	Store at -20°C. Minimize freezing and thawing.
Usage Summary:	Peptide ELISA: antibody detection limit dilution 1:128000. Western blot: Preliminary experiments in Human Brain (Frontal Cortex) and Human Ovary lysates gave no specific signal but low background (at antibody concentration up to 1 ug/ml).
Uses:	IHC - Paraffin (3.75 µg/ml), ELISA (1:128000) (Optimal dilution to be determined by the researcher)
Size:	50 µg
Concentration:	0.5 mg/ml

Immunohistochemistry Image:



Human Spleen: Formalin-Fixed, Paraffin-Embedded (FFPE)

Requested From:

Japan

Laboratory Reagent For In Vitro Research Use Only

Not for resale without prior written consent from LifeSpan BioSciences, Inc.

Created on 9/24/2014

© 2014 LifeSpan BioSciences