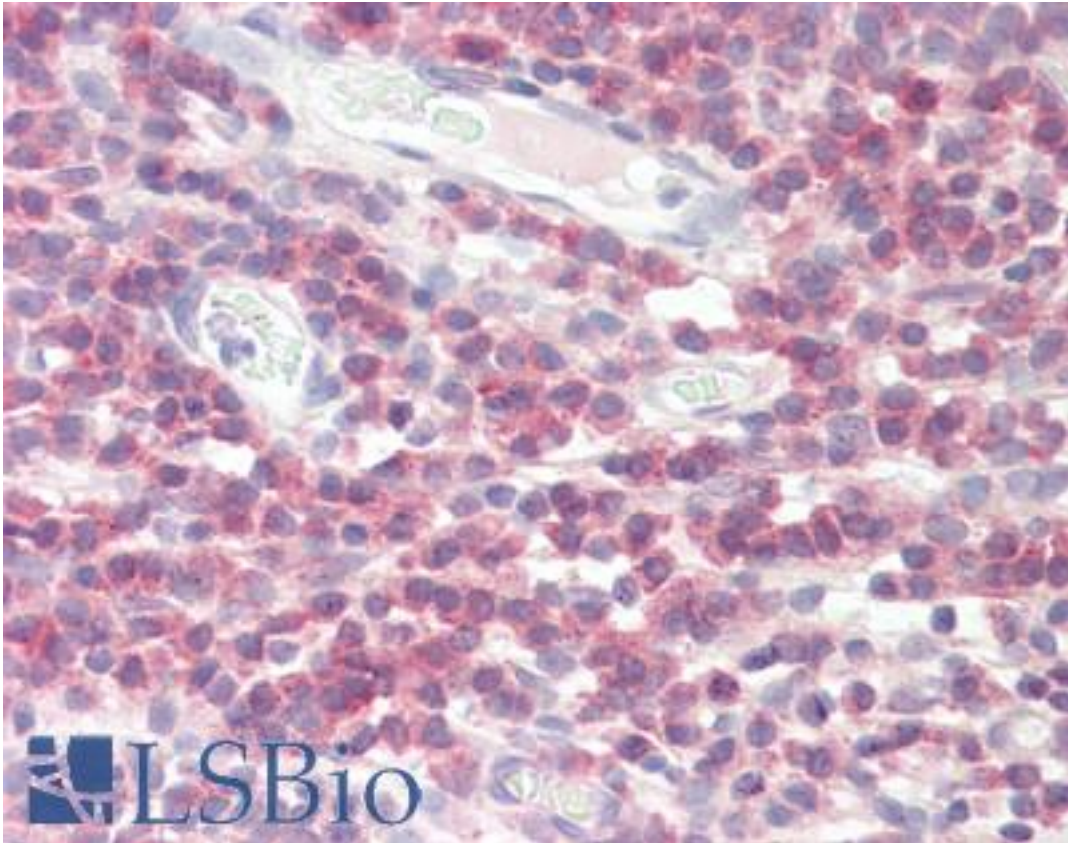


DPM1 Goat anti-Human Polyclonal (N-Terminus) Antibody - LS-B9201 - LSBio	
CatalogID:	LS-B9201
Validation:	This antibody replaces catalog number LS-C87365. It has been validated for use in the following assays: IHC-P.
Target:	dolichyl-phosphate mannosyltransferase polypeptide 1, catalytic subunit (DPM1)
Synonyms:	DPM1 Antibody, CDGIE Antibody, DPM synthase Antibody, MPD synthase Antibody, MPDS Antibody, Mannose-P-dolichol synthase Antibody
Host	DPM1 antibody was produced in Goat
Clonality:	Polyclonal
Immunogen Species:	DPM1 antibody was raised against Human
Antigen Type:	Synthetic peptide
Immunogen:	DPM1 antibody was raised against synthetic peptide RELEVRSPRQNKYS-C from the N-terminus of human DPM1 (NP_003850.1). Percent identity by BLAST analysis: Human, Gorilla, Gibbon (100%).
Specificity:	Human DPM1.
Epitope:	N-Terminus
Reactivity:	Human, Gorilla, Gibbon
Purification:	Immunoaffinity purified
Presentation:	Tris-buffered saline, pH 7.3, 0.5% BSA, 0.02% sodium azide
Recommended Storage:	Store at -20°C. Minimize freezing and thawing.
Usage Summary:	Peptide ELISA: antibody detection limit dilution 1:32000. Western Blot: Approx. 28kD band observed in Human Liver lysates (calculated MW of 29.6kD according to NP_003850.1). Recommended concentration: 0.1-0.3 ug/ml.
Uses:	IHC - Paraffin (3.75 µg/ml), Western blot (0.1 - 0.3 µg/ml), ELISA (1:32000) (Optimal dilution to be determined by the researcher)
Size:	50 µg
Concentration:	0.5 mg/ml

Immunohistochemistry Image:



Human Tonsil: Formalin-Fixed, Paraffin-Embedded (FFPE)

Western Blot Image:



Antibody (0.1 ug/ml) staining of Human Liver lysate (35 ug protein in RIPA buffer). Primary incubation was 1 hour. Detected by chemiluminescence

Requested From:

Japan

Laboratory Reagent For In Vitro Research Use Only

Not for resale without prior written consent from LifeSpan BioSciences, Inc.

Created on 9/24/2014

© 2014 LifeSpan BioSciences