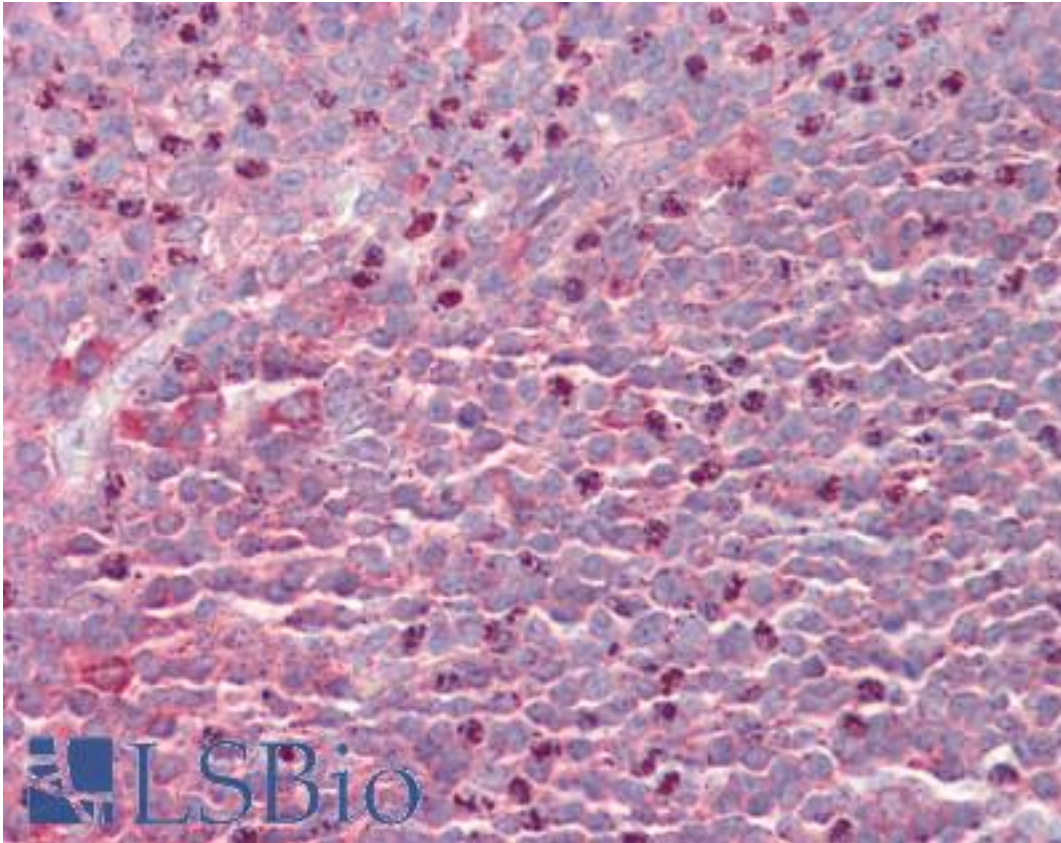


SEPT6 / Septin 6 Goat anti-Human Polyclonal (Internal) Antibody - LS-B9200 - LSBio

CatalogID:	LS-B9200
Validation:	This antibody replaces catalog number LS-C112842. It has been validated for use in the following assays: IHC-P.
Target:	septin 6 (SEPT6)
Synonyms:	SEPT6 Antibody, KIAA0128 Antibody, RP5-876A24.2 Antibody, SEP2 Antibody, Septin 2 Antibody, Septin 2 homolog Antibody, Septin 6 Antibody, Septin-6 Antibody
Host	SEPT6 antibody was produced in Goat
Clonality:	Polyclonal
Immunogen Species:	SEPT6 / Septin 6 antibody was raised against Human
Antigen Type:	Synthetic peptide
Immunogen:	SEPT6 / Septin 6 antibody was raised against synthetic peptide C-DEVNAFKQRKTA from an internal region of human SEPT6 / Septin 6 (NP_665798.1; NP_055944.2; NP_665801.1). Percent identity by BLAST analysis: Human, Gorilla, Gibbon, Monkey, Marmoset, Hamster, Panda, Dog, Bovine, Horse, Rabbit, Pig, Turkey, Chicken (100%); Elephant, Bat (92%); Platypus, Xenopus (83%).
Specificity:	Human SEPT6 / Septin 6. This antibody is expected to recognize the reported isoforms NP_665798.1, NP_055944.2 and NP_665801.1. Reported variants NP_665799.1 and NP_665798.1 represent identical protein.
Epitope:	Internal
Reactivity:	Human, Gorilla, Gibbon, Monkey, Bovine, Dog, Hamster, Horse, Pig, Rabbit, Chicken
Predicted Reactivity:	Bat
Purification:	Immunoaffinity purified
Presentation:	Tris-buffered saline, pH 7.3, 0.5% BSA, 0.02% sodium azide
Recommended Storage:	Store at -20°C. Minimize freezing and thawing.
Usage Summary:	Peptide ELISA: antibody detection limit dilution 1:4000. Western blot: Approx 50kDa band observed in Human Testis, Thyroid Gland and MOLT4 cell lysates (calculated MW of 49.7kDa according to NP_055944.2). Recommended concentration: 0.03-1 ug/ml.
Uses:	IHC - Paraffin (3.75 µg/ml), Western blot (0.03 - 1 µg/ml), ELISA (1:4000) (Optimal dilution to be determined by the researcher)
Size:	50 µg
Concentration:	0.5 mg/ml

Immunohistochemistry Image:



Human Tonsil: Formalin-Fixed, Paraffin-Embedded (FFPE)

Western Blot Image:



SEPT6 antibody (1 ug/ml) staining of Human Testis lysate (35 ug protein/ml in RIPA buffer). Primary incubation was 1 hour. Detected by chemiluminescence.

Requested From:	Japan
Laboratory Reagent For In Vitro Research Use Only	
Not for resale without prior written consent from LifeSpan BioSciences, Inc.	
Created on 9/24/2014	
© 2014 LifeSpan BioSciences	