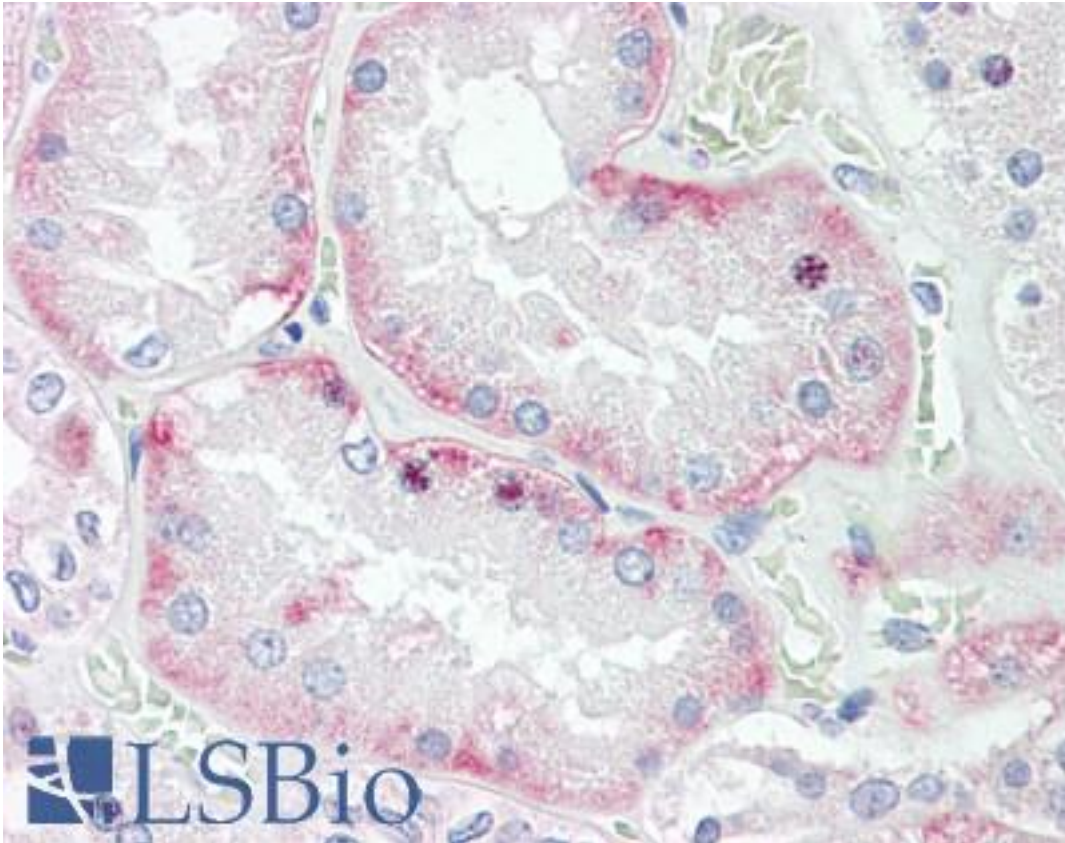


| HOXD10 Goat anti-Human Polyclonal (Internal) Antibody - LS-B9199 - LSBio |  |
|--|--|
| <b>CatalogID:</b>  | LS-B9199   |
| <b>Validation:</b>   | This antibody replaces catalog number LS-C112742. It has been validated for use in the following assays: IHC-P.  |
| <b>Target:</b>   | homeobox D10 (HOXD10)  |
| <b>Synonyms:</b>   | HOXD10 Antibody, Homeobox 4D Antibody, Homeobox protein Hox-D10 Antibody, Hox-4.4 Antibody, Homeobox protein Hox-4E Antibody, HOX4 Antibody, Homeobox D10 Antibody, HOX4D Antibody, HOX4E Antibody, Homeobox D10 Antibody, Homeobox protein Hox-4D Antibody  |
| <b>Host</b>  | HOXD10 antibody was produced in Goat   |
| <b>Clonality:</b>  | Polyclonal   |
| <b>Immunogen Species:</b>  | HOXD10 antibody was raised against Human   |
| <b>Antigen Type:</b>   | Synthetic peptide  |
| <b>Immunogen:</b>  | HOXD10 antibody was raised against synthetic peptide PNRSCRIEQPVTQQ from an internal region of human HOXD10 (NP_002139.2). Percent identity by BLAST analysis: Human, Chimpanzee, Gorilla, Orangutan, Gibbon, Monkey, Marmoset, Tamarin, Mouse, Rat, Hamster, Elephant, Panda, Bovine, Dog, Bat, Horse, Rabbit, Pig, Chicken (100%); Opossum, Platypus, Xenopus (93%).                           |
| <b>Specificity:</b>  | Human HOXD10.  |
| <b>Epitope:</b>  | Internal   |
| <b>Reactivity:</b>   | Human, Chimpanzee, Gorilla, Orangutan, Gibbon, Monkey, Mouse, Rat, Bat, Bovine, Dog, Hamster, Horse, Pig, Rabbit, Chicken  |
| <b>Predicted Reactivity:</b>   | Xenopus  |
| <b>Purification:</b>   | Immunoaffinity purified  |
| <b>Presentation:</b>   | Tris-buffered saline, pH 7.3, 0.5% BSA, 0.02% sodium azide   |
| <b>Recommended Storage:</b>  | Store at -20°C. Minimize freezing and thawing.   |
| <b>Usage Summary:</b>  | Peptide ELISA: antibody detection limit dilution 1:32000. Western blot: Approx. 37 kDa band observed in Human Kidney lysates (calculated MW of 38.4 kDa according to NP_002139.2). Recommended concentration: 0.2-0.6 µg/ml. Additional bands of unknown identity were also consistently observed at 90+26 kDa. These bands were successfully blocked by incubation with the immunising peptide. |
| <b>Uses:</b>   | IHC - Paraffin (3.75 µg/ml), Western blot (0.2 - 0.6 µg/ml), ELISA (1:32000) (Optimal dilution to be determined by the researcher)   |
| <b>Size:</b>   | 50 µg  |
| <b>Concentration:</b>  | 0.5 mg/ml  |

**Immunohistochemistry Image:**



Human Kidney: Formalin-Fixed, Paraffin-Embedded (FFPE)

**Western Blot Image:**



HOXD10 antibody (0.2 ug/ml) staining of Human Kidney lysate (35 ug protein/ml in RIPA buffer). Primary incubation was 1 hour. Detected by chemiluminescence.

**Requested From:**

Japan

Laboratory Reagent For In Vitro Research Use Only

Not for resale without prior written consent from LifeSpan BioSciences, Inc.

Created on 9/24/2014

© 2014 LifeSpan BioSciences