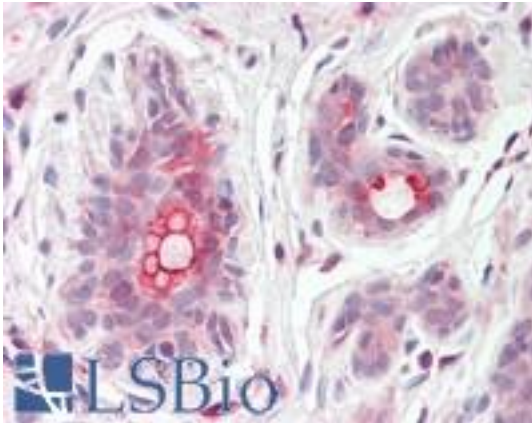


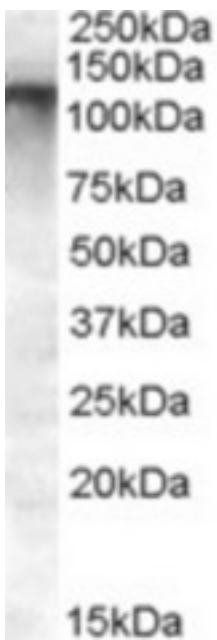
ABCC11 / MRP8 Goat anti-Human Polyclonal (C-Terminus) Antibody - LS-B9198 - LSBio	
CatalogID:	LS-B9198
Validation:	This antibody replaces catalog number LS-C87313. It has been validated for use in the following assays: IHC-P.
Target:	ATP-binding cassette, sub-family C (CFTR/MRP), member 11 (ABCC11)
Synonyms:	ABCC11 Antibody, EWWA Antibody, Multi-resistance protein 8 Antibody, MRP8 Antibody, WW Antibody
Family / Subfamily:	Transporter / ATP-binding cassette - ABCC/MRP
Host	ABCC11 antibody was produced in Goat
Clonality:	Polyclonal
Immunogen Species:	ABCC11 / MRP8 antibody was raised against Human
Antigen Type:	Synthetic peptide
Immunogen:	ABCC11 / MRP8 antibody was raised against synthetic peptide C-KVVEFDRPEVLRK from an internal region (near C-terminus) of human ABCC11 (NP_115972.2; NP_660187.1). Percent identity by BLAST analysis: Human, Gorilla, Monkey (100%); Rabbit (92%); Marmoset, Dog, Horse (85%).
Specificity:	Human ABCC11. This antibody is expected to recognize both reported isoforms (NP_115972.2; NP_660187.1). Reported variants represent identical protein (NP_115972.2; NP_149163.2).
Epitope:	C-Terminus
Reactivity:	Human, Gorilla, Monkey
Predicted Reactivity:	Rabbit
Purification:	Immunoaffinity purified
Presentation:	Tris-buffered saline, pH 7.3, 0.5% BSA, 0.02% sodium azide
Recommended Storage:	Store at -20°C. Minimize freezing and thawing.
Usage Summary:	Peptide ELISA: antibody detection limit dilution 1:32000. Western Blot: Approx. 125kD band observed in Human Breast and Human Testis lysates (calculated MW of 150kD according to NP_660187.1). Recommended concentration: 0.5-1.5 ug/ml.
Uses:	IHC - Paraffin (3.75 µg/ml), Western blot (0.5 - 1.5 µg/ml), ELISA (1:32000) (Optimal dilution to be determined by the researcher)
Size:	50 µg
Concentration:	0.5 mg/ml

Immunohistochemistry Image:



Human Breast: Formalin-Fixed, Paraffin-Embedded (FFPE)

Western Blot Image:



Antibody (0.5 ug/ml) staining of Human Breast lysate (35 ug protein in RIPA buffer). Primary incubation was 1 hour. Detected by chemiluminescence

Requested From:

Japan

Laboratory Reagent For In Vitro Research Use Only

Not for resale without prior written consent from LifeSpan BioSciences, Inc.

Created on 9/24/2014

© 2014 LifeSpan BioSciences