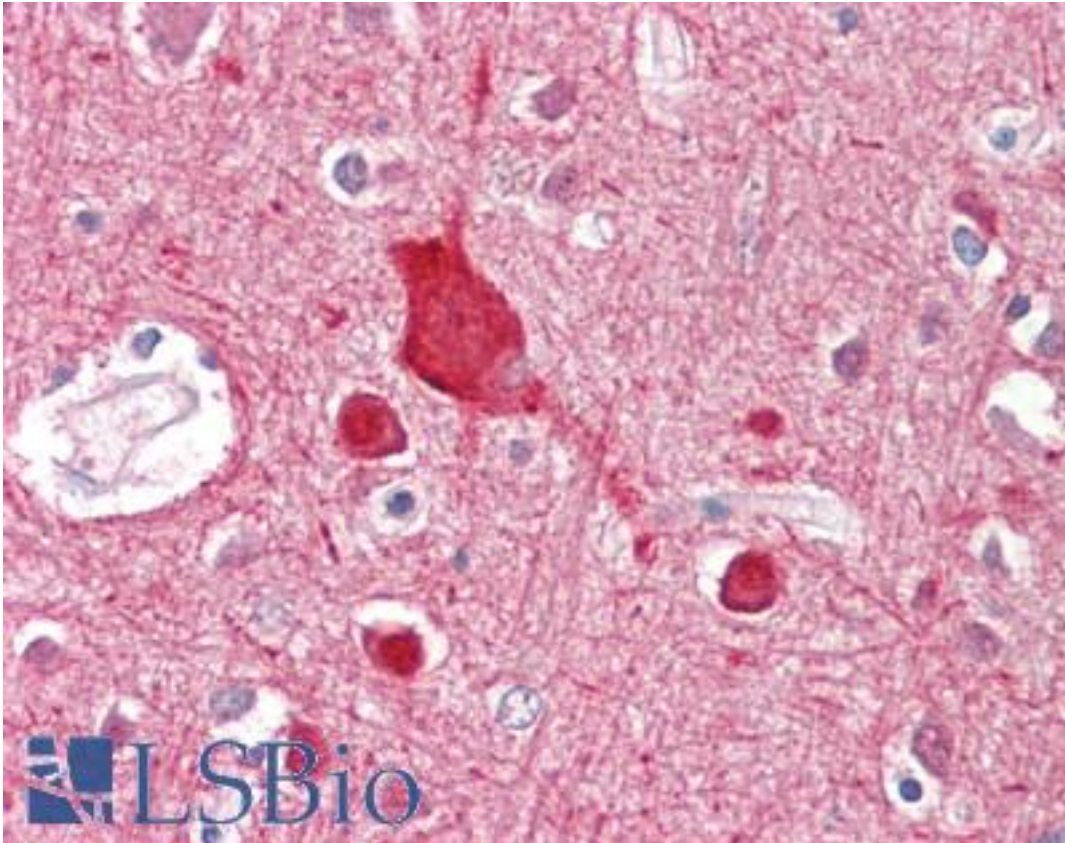


ABCA2 Goat anti-Human Polyclonal (Internal) Antibody - LS-B9197 - LSBio

CatalogID:	LS-B9197
Validation:	This antibody replaces catalog number LS-C87291. It has been validated for use in the following assays: IHC-P.
Target:	ATP-binding cassette, sub-family A (ABC1), member 2 (ABCA2)
Synonyms:	ABCA2 Antibody, ATP-binding cassette 2 Antibody, ABC2 Antibody, KIAA1062 Antibody
Family / Subfamily:	Transporter / ATP-binding cassette - ABCA/ABC1
Host	ABCA2 antibody was produced in Goat
Clonality:	Polyclonal
Immunogen Species:	ABCA2 antibody was raised against Human
Antigen Type:	Synthetic peptide
Immunogen:	ABCA2 antibody was raised against synthetic peptide C-KKQSDNLEQQETEP from an internal region of human ABCA2 (NP_001597.2; NP_997698.1). Percent identity by BLAST analysis: Human, Gorilla, Gibbon, Monkey, Elephant, Panda, Dog, Horse (100%); Marmoset, Turkey, Chicken (93%); Mouse, Rat, Opossum, Zebrafish (86%).
Specificity:	Human ABCA2. This antibody is expected to recognize both reported isoforms (NP_001597.2; NP_997698.1).
Epitope:	Internal
Reactivity:	Human, Gorilla, Gibbon, Dog, Horse
Predicted Reactivity:	Monkey, Chicken
Purification:	Immunoaffinity purified
Presentation:	Tris-buffered saline, pH 7.3, 0.5% BSA, 0.02% sodium azide
Recommended Storage:	Store at -20°C. Minimize freezing and thawing.
Usage Summary:	Peptide ELISA: antibody detection limit dilution 1:2000.
Uses:	IHC - Paraffin (3.75 µg/ml), ELISA (1:2000) (Optimal dilution to be determined by the researcher)
Size:	50 µg
Concentration:	0.5 mg/ml

Immunohistochemistry Image:



Human Brain, Cortex: Formalin-Fixed, Paraffin-Embedded (FFPE)

Requested From:

Japan

Laboratory Reagent For In Vitro Research Use Only

Not for resale without prior written consent from LifeSpan BioSciences, Inc.

Created on 9/24/2014

© 2014 LifeSpan BioSciences