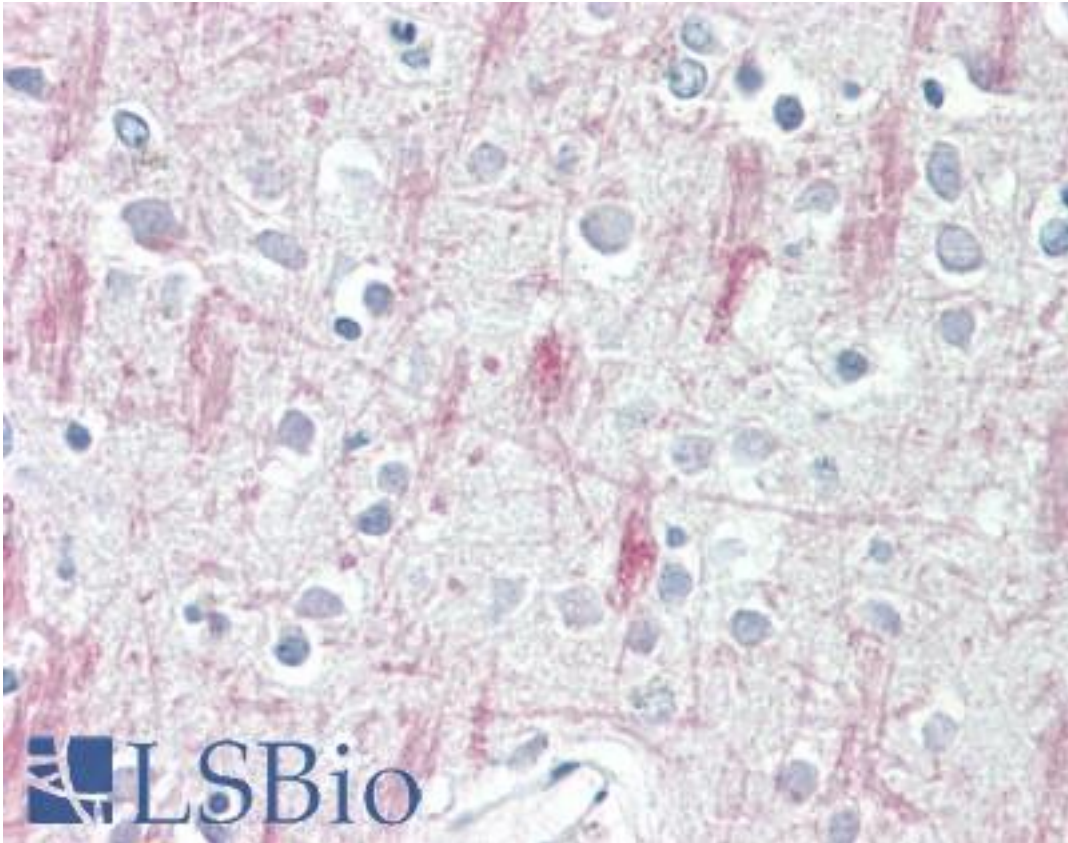


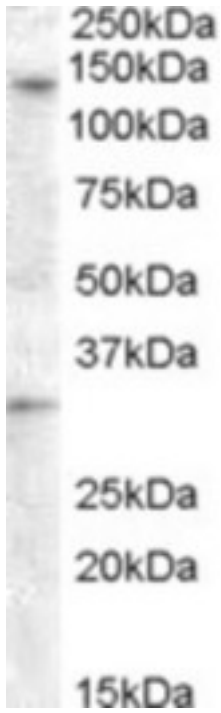
GPR125 Goat anti-Human Polyclonal (Internal) Antibody - LS-B9196 - LSBio	
CatalogID:	LS-B9196
Validation:	This antibody replaces catalog number LS-C87275. It has been validated for use in the following assays: IHC-P.
Target:	G protein-coupled receptor 125 (GPR125)
Synonyms:	GPR125 Antibody, TEM5L Antibody, G protein-coupled receptor 125 Antibody, PGR21 Antibody
Family / Subfamily:	GPCR / Orphan-B
Host	GPR125 antibody was produced in Goat
Clonality:	Polyclonal
Immunogen Species:	GPR125 antibody was raised against Human
Antigen Type:	Synthetic peptide
Immunogen:	GPR125 antibody was raised against synthetic peptide CTNKSASSFKNS from an internal region of human GPR125 (NP_660333.2). Percent identity by BLAST analysis: Human, Gorilla, Gibbon, Monkey, Marmoset, Mouse, Hamster, Elephant, Bovine, Bat, Horse, Rabbit (100%); Panda, Dog, Pig, Opossum, Turkey, Platypus, Xenopus (92%); Chicken (83%).
Specificity:	Human GPR125.
Epitope:	Internal
Reactivity:	Human, Gorilla, Gibbon, Monkey, Mouse, Bat, Bovine, Hamster, Horse, Rabbit
Predicted Reactivity:	Dog, Pig, Xenopus
Purification:	Immunoaffinity purified
Presentation:	Tris-buffered saline, pH 7.3, 0.5% BSA, 0.02% sodium azide
Recommended Storage:	Store at -20°C. Minimize freezing and thawing.
Usage Summary:	Peptide ELISA: antibody detection limit dilution 1:8000. Western Blot: Approx 140kD band observed in Human Ovary lysates (calculated MW of 146kD according to NP_660333.2). Recommended concentration: 0.5-1.5 ug/ml. An additional band of unknown identity was also consistently observed at 33kD. This band was successfully blocked by incubation with the immunizing peptide. We would appreciate any feedback from people in the field - have any such results been reported with other antibodies / lysates? Have any further splice variants / modified forms been reported?
Uses:	IHC - Paraffin (3.75 µg/ml), Western blot (0.5 - 1.5 µg/ml), ELISA (1:8000) (Optimal dilution to be determined by the researcher)
Size:	50 µg
Concentration:	0.5 mg/ml

Immunohistochemistry Image:



Human Brain, Cortex: Formalin-Fixed, Paraffin-Embedded (FFPE)

Western Blot Image:



Antibody (0.5 ug/ml) staining of Human Ovary lysate (35 ug protein in RIPA buffer). Primary incubation was 1 hour. Detected by chemiluminescence

Requested From:

Japan

Laboratory Reagent For In Vitro Research Use Only

Not for resale without prior written consent from LifeSpan BioSciences, Inc.

Created on 9/24/2014

© 2014 LifeSpan BioSciences