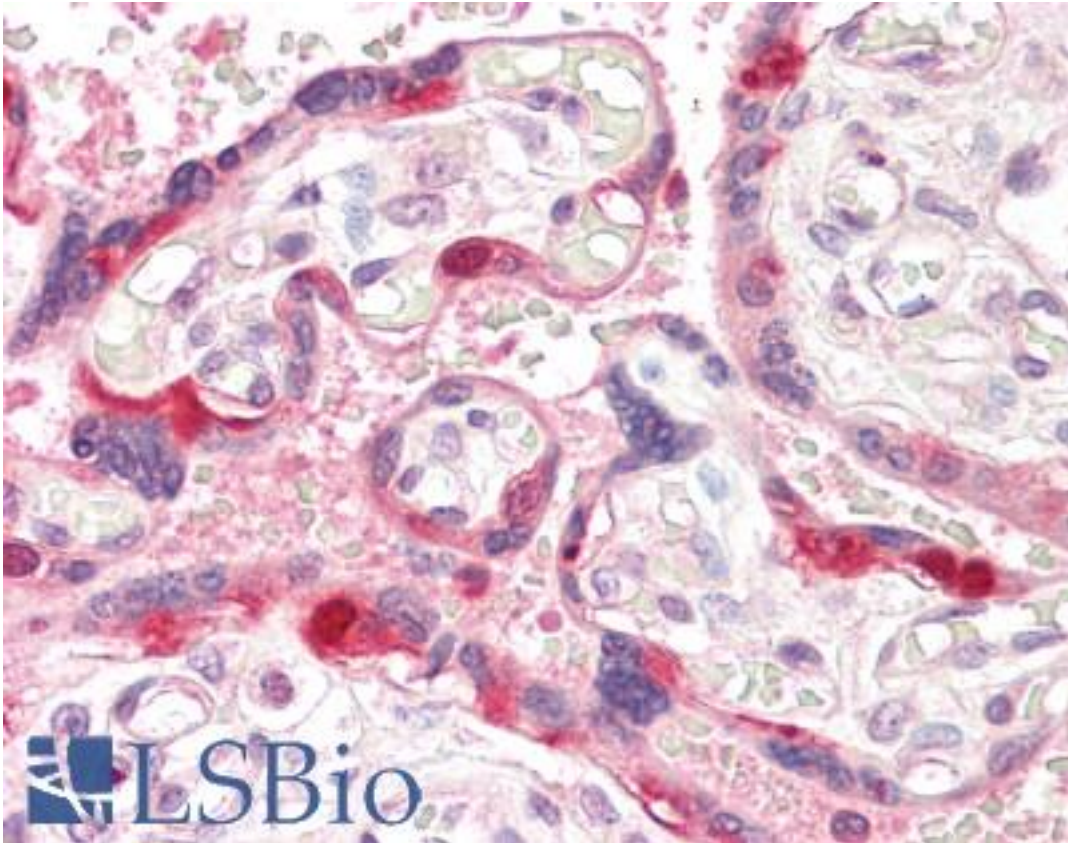


ARHGEF5 Goat anti-Human Polyclonal (Internal) Antibody - LS-B9193 - LSBio	
<b>CatalogID:</b>	LS-B9193
<b>Validation:</b>	This antibody replaces catalog number LS-C54906. It has been validated for use in the following assays: IHC-P.
<b>Target:</b>	Rho guanine nucleotide exchange factor (GEF) 5 (ARHGEF5)
<b>Synonyms:</b>	ARHGEF5 Antibody, GEF5 Antibody, Ephexin-3 Antibody, Oncogene TIM Antibody, p60 Antibody, TIM1 Antibody, p60 TIM Antibody, TIM Antibody
<b>Host</b>	ARHGEF5 antibody was produced in Goat
<b>Clonality:</b>	Polyclonal
<b>Immunogen Species:</b>	ARHGEF5 antibody was raised against Human
<b>Antigen Type:</b>	Synthetic peptide
<b>Immunogen:</b>	ARHGEF5 antibody was raised against synthetic peptide C-DKEIDQNSQQEE from an internal region of human ARHGEF5 (NP_005426.2). Percent identity with other species by BLAST analysis: Human (100%), Monkey (83%), Marmoset (83%).
<b>Specificity:</b>	Human ARHGEF5.
<b>Epitope:</b>	Internal
<b>Reactivity:</b>	Human
<b>Purification:</b>	Immunoaffinity purified
<b>Presentation:</b>	Tris-buffered saline, pH 7.3, 0.5% BSA, 0.02% sodium azide
<b>Recommended Storage:</b>	Store at -20°C. Minimize freezing and thawing.
<b>Uses:</b>	IHC - Paraffin (3.75 µg/ml), Western blot (0.1 - 0.3 µg/ml), ELISA (1:16000) (Optimal dilution to be determined by the researcher)
<b>Size:</b>	50 µg
<b>Concentration:</b>	0.5 mg/ml

**Immunohistochemistry Image:**



Human Placenta: Formalin-Fixed, Paraffin-Embedded (FFPE)

**Western Blot Image:**



Antibody (0.1 ug/ml) staining of HeLa Lysate (35 ug protein in RIPA buffer). Primary incubation was 1 hour. Detected by chemiluminescence.

**Requested From:**

Japan

Laboratory Reagent For In Vitro Research Use Only

Not for resale without prior written consent from LifeSpan BioSciences, Inc.

Created on 9/24/2014

© 2014 LifeSpan BioSciences