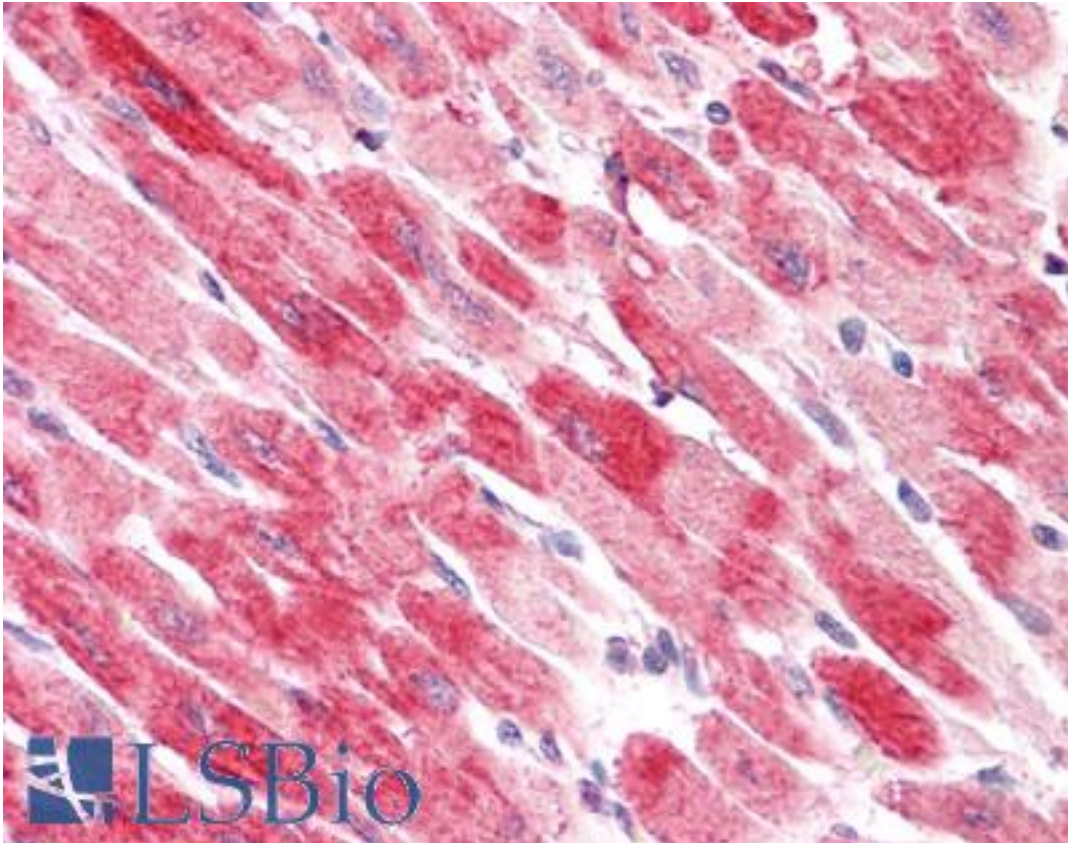


CFL2 / Cofilin 2 Goat anti-Human Polyclonal (C-Terminus) Antibody - LS-B9191 - LSBio	
<b>CatalogID:</b>	LS-B9191
<b>Validation:</b>	This antibody replaces catalog number LS-C20145. It has been validated for use in the following assays: IHC-P.
<b>Target:</b>	cofilin 2 (muscle) (CFL2)
<b>Synonyms:</b>	CFL2 Antibody, Cofilin 2 Antibody, Cofilin-2 Antibody, NEM7 Antibody, Cofilin 2 (muscle) Antibody, Cofilin, muscle isoform Antibody
<b>Family / Subfamily:</b>	Cytoskeleton
<b>Host</b>	CFL2 antibody was produced in Goat
<b>Clonality:</b>	Polyclonal
<b>Immunogen Species:</b>	CFL2 / Cofilin 2 antibody was raised against Human
<b>Antigen Type:</b>	Synthetic peptide
<b>Immunogen:</b>	CFL2 / Cofilin 2 antibody was raised against synthetic peptide C-DIKDRSTLGEK from the C-terminus of human CFL2 (NP_068733.1; NP_619579.1). Percent identity by BLAST analysis: Human, Gorilla, Gibbon, Monkey, Marmoset, Mouse, Rat, Hamster, Elephant, Panda, Dog, Bat, Bovine, Horse, Pig, Opossum, Turkey, Chicken, Platypus (100%); Baboon, Lizard (91%).
<b>Specificity:</b>	Human CFL2. This antibody is expected to recognise both reported isoforms (NP_068733 and NP_619579)
<b>Epitope:</b>	C-Terminus
<b>Reactivity:</b>	Human, Gorilla, Gibbon, Monkey, Mouse, Rat, Bat, Bovine, Dog, Hamster, Horse, Pig, Chicken
<b>Purification:</b>	Immunoaffinity purified
<b>Presentation:</b>	Tris-buffered saline, pH 7.3, 0.5% BSA, 0.02% sodium azide
<b>Recommended Storage:</b>	Store at -20°C. Minimize freezing and thawing.
<b>Uses:</b>	IHC - Paraffin (3.75 µg/ml), Western blot (0.01 - 0.03 µg/ml), ELISA (1:128000) (Optimal dilution to be determined by the researcher)
<b>Size:</b>	50 µg
<b>Concentration:</b>	0.5 mg/ml

**Immunohistochemistry Image:**



Human Heart: Formalin-Fixed, Paraffin-Embedded (FFPE)

**Western Blot Image:**



(0.003 ug/ml) Staining of Human Muscle lysate (35 ug protein in RIPA buffer). Primary incubation was 1 hour. Detected by chemiluminescence.

**Requested From:**

Japan

Laboratory Reagent For In Vitro Research Use Only

Not for resale without prior written consent from LifeSpan BioSciences, Inc.

Created on 9/24/2014

© 2014 LifeSpan BioSciences