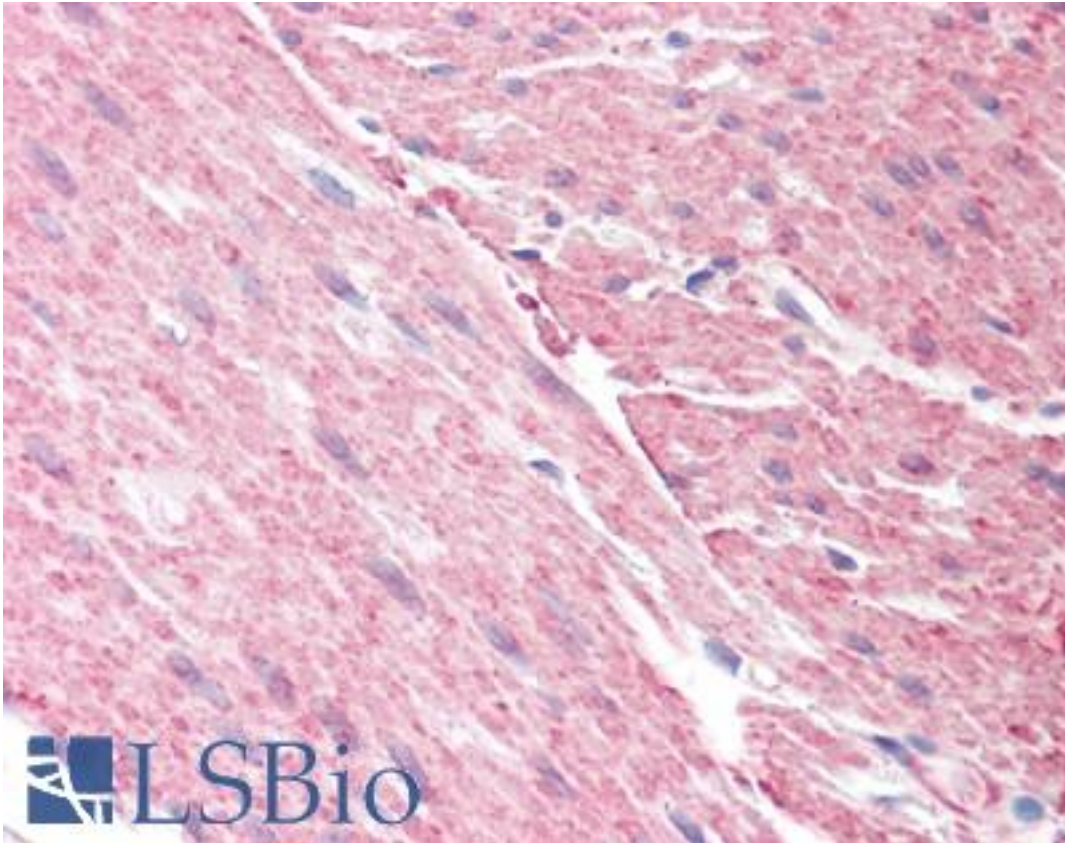


ARHGAP26 / GRAF Goat anti-Human Polyclonal (C-Terminus) Antibody - LS-B9186 - LSBio	
<b>CatalogID:</b>	LS-B9186
<b>Validation:</b>	This antibody replaces catalog number LS-C54940. It has been validated for use in the following assays: IHC-P.
<b>Target:</b>	Rho GTPase activating protein 26 (ARHGAP26)
<b>Synonyms:</b>	ARHGAP26 Antibody, GRAF Antibody, KIAA0621 Antibody, GRAF1 Antibody, OPHN1L Antibody, Oligophrenin-1-like protein Antibody, OPHN1L1 Antibody
<b>Host</b>	ARHGAP26 antibody was produced in Goat
<b>Clonality:</b>	Polyclonal
<b>Immunogen Species:</b>	ARHGAP26 / GRAF antibody was raised against Human
<b>Antigen Type:</b>	Synthetic peptide
<b>Immunogen:</b>	ARHGAP26 / GRAF antibody was raised against synthetic peptide C-KTGLIPENYVEFL from the C-terminus of human ARHGAP26 / GRAF (NP_055886.1; NP_001129080.1). Percent identity by BLAST analysis: Human, Gorilla, Gibbon, Monkey, Marmoset, Mouse, Rat, Hamster, Panda, Bovine, Dog, Horse, Opossum, Turkey, Chicken, Lizard, Xenopus (100%); Elephant, Platypus, Zebrafish, Drosophila, Beetle (92%); Bat, Rabbit, Pig, Stickleback, Water flea (85%).
<b>Specificity:</b>	Human ARHGAP26 / GRAF. This antibody is expected to recognise both reported isoforms.
<b>Epitope:</b>	C-Terminus
<b>Reactivity:</b>	Human, Gorilla, Gibbon, Monkey, Mouse, Rat, Bovine, Dog, Hamster, Horse, Chicken, Xenopus
<b>Predicted Reactivity:</b>	Zebrafish, Drosophila
<b>Purification:</b>	Immunoaffinity purified
<b>Presentation:</b>	Tris-buffered saline, pH 7.3, 0.5% BSA, 0.02% sodium azide
<b>Recommended Storage:</b>	Store at -20°C. Minimize freezing and thawing.
<b>Uses:</b>	IHC - Paraffin (3.75 µg/ml), Western blot (0.3 - 1 µg/ml), ELISA (1:64000) (Optimal dilution to be determined by the researcher)
<b>Size:</b>	50 µg
<b>Concentration:</b>	0.5 mg/ml

**Immunohistochemistry Image:**



Human Colon, Muscularis Propria: Formalin-Fixed, Paraffin-Embedded (FFPE)

**Western Blot Image:**



Antibody (0.3 ug/ml) staining of Human Heart lysate (35 ug protein in RIPA buffer) with (B) and without (A) blocking with the immunizing peptide. Primary incubation was 1 hour. Detected by chemiluminescence.

<b>Requested From:</b>	Japan
Laboratory Reagent For In Vitro Research Use Only	
Not for resale without prior written consent from LifeSpan BioSciences, Inc.	
Created on 9/24/2014	
© 2014 LifeSpan BioSciences	