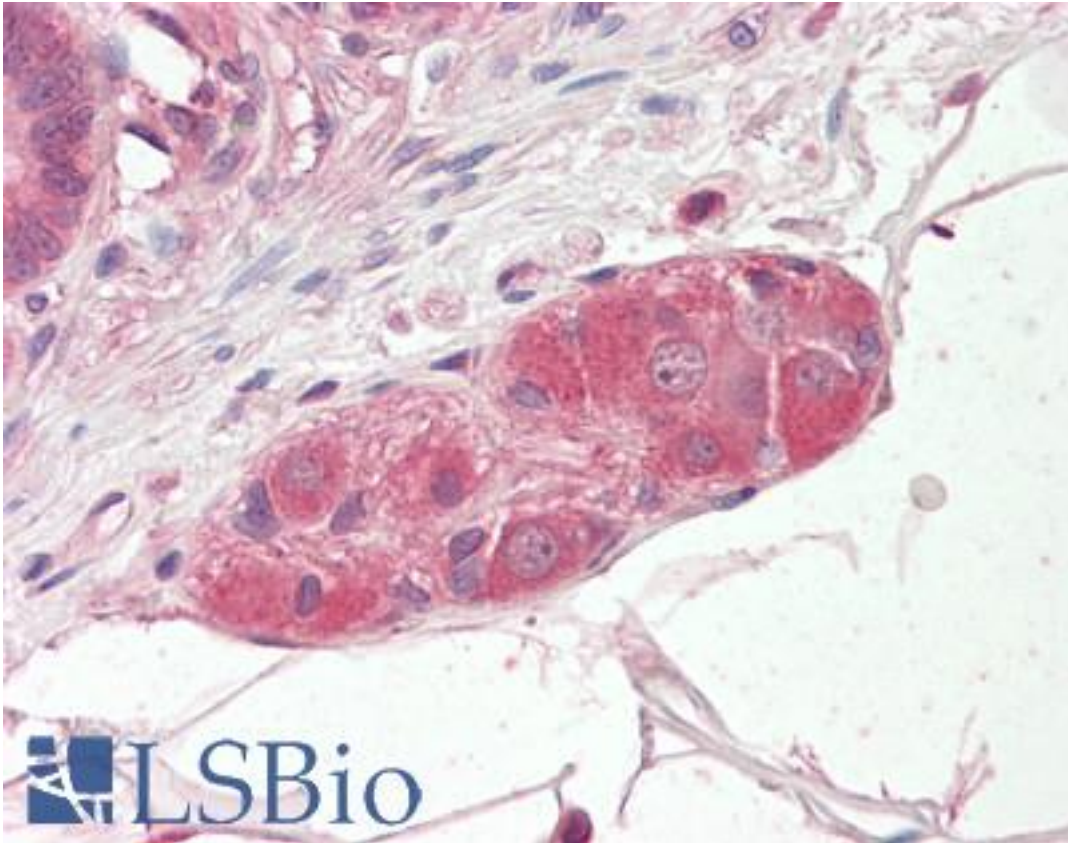


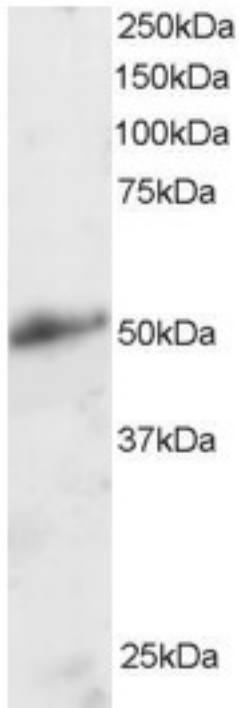
KLF8 Goat anti-Human Polyclonal (N-Terminus) Antibody - LS-B9181 - LSBio	
CatalogID:	LS-B9181
Validation:	This antibody replaces catalog number LS-C20173. It has been validated for use in the following assays: IHC-P.
Target:	Kruppel-like factor 8 (KLF8)
Synonyms:	KLF8 Antibody, Basic kruppel-like factor 3 Antibody, BKLF3 Antibody, DXS741 Antibody, Krueppel-like factor 8 Antibody, Kruppel-like factor 8 Antibody, Zinc finger protein 741 Antibody, Basic krueppel-like factor 3 Antibody, ZNF741 Antibody
Host	KLF8 antibody was produced in Goat
Clonality:	Polyclonal
Immunogen Species:	KLF8 antibody was raised against Human
Antigen Type:	Synthetic peptide
Immunogen:	KLF8 antibody was raised against synthetic peptide VDMDKLINNLEVQ-C from the N-terminus of human KLF8 (NP_009181.2; NP_001152768.1). Percent identity with other species by BLAST analysis: Human (100%), Marmoset (92%), Gorilla (85%), Gibbon (85%), Monkey (85%), Rabbit (85%), Pig (85%).
Specificity:	Human KLF8. This antibody is expected to recognise isoform 1 (NP_009181.2) and isoform 2 (NP_001152768.1).
Epitope:	N-Terminus
Reactivity:	Human
Predicted Reactivity:	Monkey
Purification:	Immunoaffinity purified
Presentation:	Tris-buffered saline, pH 7.3, 0.5% BSA, 0.02% sodium azide
Recommended Storage:	Store at -20°C. Minimize freezing and thawing.
Uses:	IHC - Paraffin (3.75 µg/ml), Western blot (1 - 3 µg/ml), ELISA (Optimal dilution to be determined by the researcher)
Size:	50 µg
Concentration:	0.5 mg/ml

Immunohistochemistry Image:



Human Small Intestine, Submucosal Plexus: Formalin-Fixed, Paraffin-Embedded (FFPE)

Western Blot Image:



Staining (2 ug/ml) of Human Kidney lysate (RIPA buffer, 30 ug total protein per lane). Primary incubated for 1 hour. Detected by chemiluminescence.

Requested From:

Japan

Laboratory Reagent For In Vitro Research Use Only

Not for resale without prior written consent from LifeSpan BioSciences, Inc.

Created on 9/24/2014

© 2014 LifeSpan BioSciences