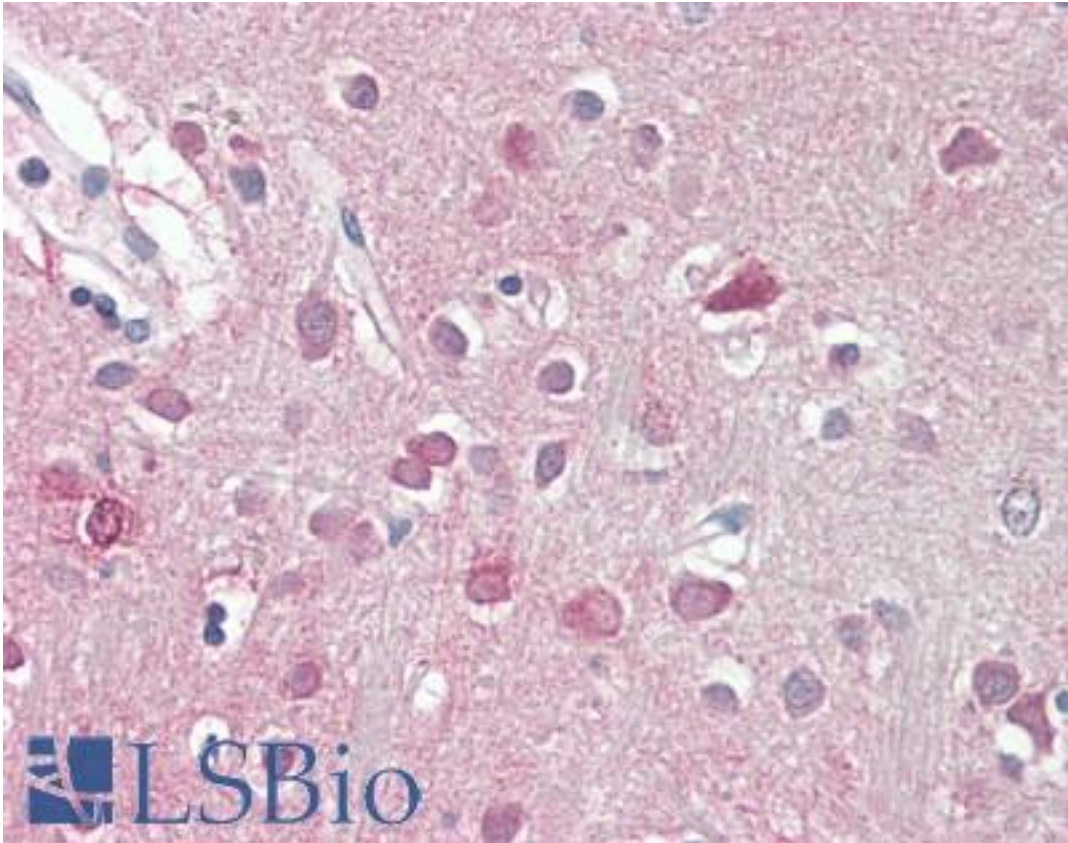


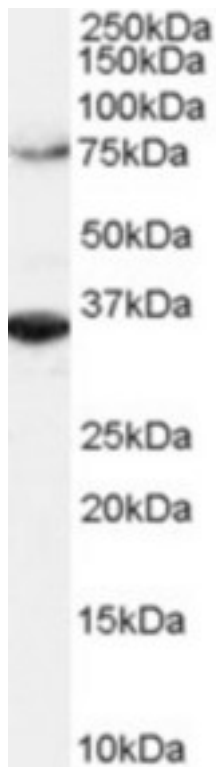
ORC3L / ORC3 Goat anti-Human Polyclonal (C-Terminus) Antibody - LS-B9179 - LSBio	
CatalogID:	LS-B9179
Validation:	This antibody replaces catalog number LS-C55202. It has been validated for use in the following assays: IHC-P.
Target:	origin recognition complex, subunit 3 (ORC3)
Synonyms:	ORC3 Antibody, LATHEO Antibody, Homolog of latheo, Drosophila Antibody, ORC3L Antibody, IMAGE50150 Antibody
Host	ORC3 antibody was produced in Goat
Clonality:	Polyclonal
Immunogen Species:	ORC3L / ORC3 antibody was raised against Human
Antigen Type:	Synthetic peptide
Immunogen:	ORC3L / ORC3 antibody was raised against synthetic peptide QKTDHVARLWTGGC from the C-terminus of human ORC3 / ORC3L (NP_862820.1; NP_036513.2). Percent identity by BLAST analysis: Human, Gibbon, Monkey, Marmoset, Mouse, Rat, Hamster, Elephant, Panda, Dog, Bat, Bovine, Horse, Rabbit, Pig, Opossum, Turkey, Chicken, Platypus, Xenopus, Zebrafish (100%); Lizard, Salmon (93%); Sea anemone, Beetle (86%).
Specificity:	Human ORC3 / ORC3L. This antibody is expected to recognize both reported isoforms (NP_862820.1 and NP_036513.2).
Epitope:	C-Terminus
Reactivity:	Human, Gibbon, Monkey, Mouse, Rat, Bat, Bovine, Dog, Hamster, Horse, Pig, Rabbit, Chicken, Xenopus, Zebrafish
Purification:	Immunoaffinity purified
Presentation:	Tris-buffered saline, pH 7.3, 0.5% BSA, 0.02% sodium azide
Recommended Storage:	Store at -20°C. Minimize freezing and thawing.
Uses:	IHC - Paraffin (3.75 µg/ml), Western blot (1 - 3 µg/ml), ELISA (1:32000) (Optimal dilution to be determined by the researcher)
Size:	50 µg
Concentration:	0.5 mg/ml

Immunohistochemistry Image:



Human Brain, Cortex

Western Blot Image:



Antibody (2 ug/ml) staining of HeLa lysate (RIPA buffer, 1.4E5 cells per lane). Detected by Western blot of chemiluminescence.

Requested From:

Japan

Laboratory Reagent For In Vitro Research Use Only

Not for resale without prior written consent from LifeSpan BioSciences, Inc.

Created on 9/24/2014

© 2014 LifeSpan BioSciences