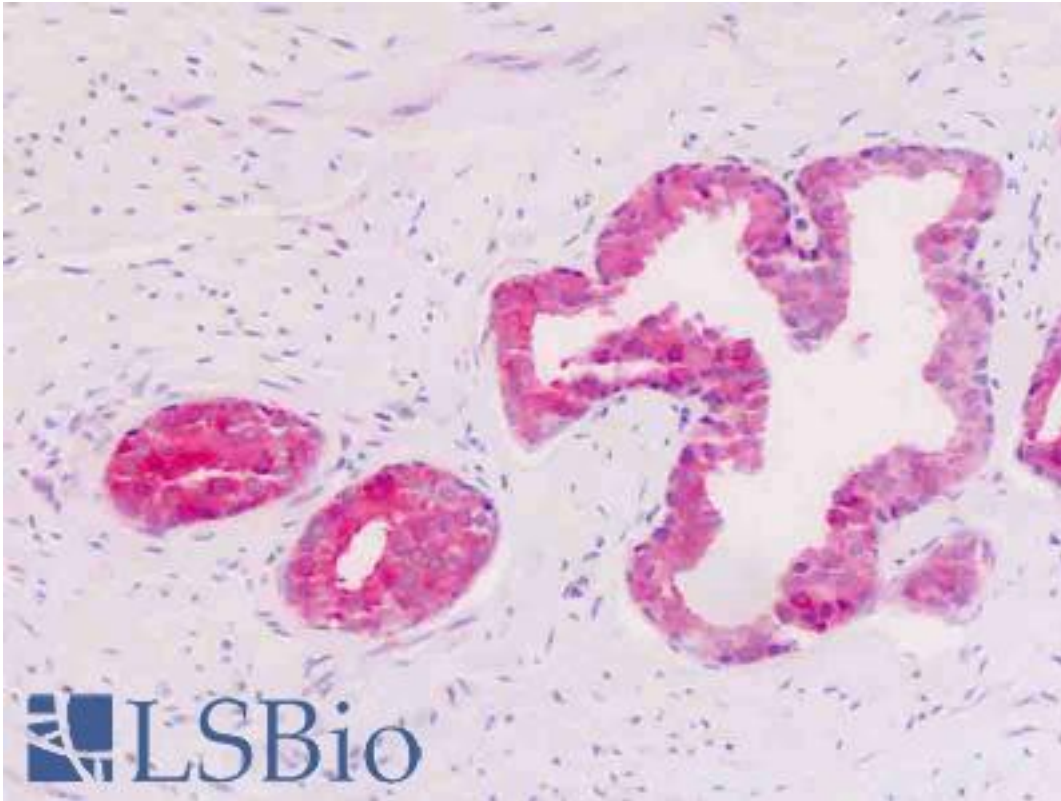


GPR34 Rabbit anti-Human Polyclonal (aa239-269) Antibody - LS-B9177 - LSBio

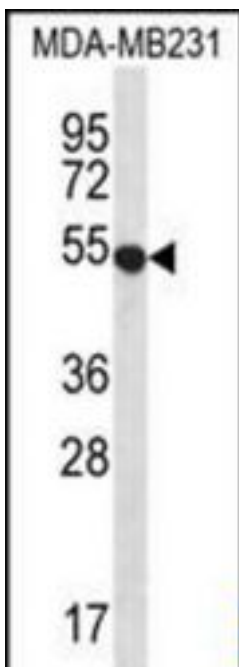
CatalogID:	LS-B9177
Validation:	This antibody replaces catalog number LS-C166636. It has been validated for use in the following assays: IHC-P.
Target:	G protein-coupled receptor 34 (GPR34)
Synonyms:	GPR34 Antibody, G protein-coupled receptor 34 Antibody
Family / Subfamily:	GPCR / Orphan-A
Host	GPR34 antibody was produced in Rabbit
Clonality:	Polyclonal
Immunogen Species:	GPR34 antibody was raised against Human
Antigen Type:	Synthetic peptide
Immunogen:	GPR34 antibody was raised against kLH-conjugated synthetic peptide from internal region of human GPR34.
Specificity:	Human GPR34
Epitope:	aa239-269
Reactivity:	Human
Purification:	Immunoaffinity purified
Presentation:	PBS, 0.09% sodium azide
Recommended Storage:	Maintain refrigerated at 2-8°C for up to 6 months. For long term storage store at -20°C.
Uses:	IHC - Paraffin (5 µg/ml), Western blot (1:1000) (Optimal dilution to be determined by the researcher)
Size:	200 µl

Immunohistochemistry Image:



Human Prostate, Epithelium: Formalin-Fixed, Paraffin-Embedded (FFPE)

Western Blot Image:



GPR34 Antibody (Center) Western blot of MDA-MB231 cell line lysates (35 ug/lane). This demonstrates the GPR34 antibody detected the GPR34 protein (arrow).

Requested From:

Japan

Laboratory Reagent For In Vitro Research Use Only

Not for resale without prior written consent from LifeSpan BioSciences, Inc.

Created on 9/24/2014

© 2014 LifeSpan BioSciences