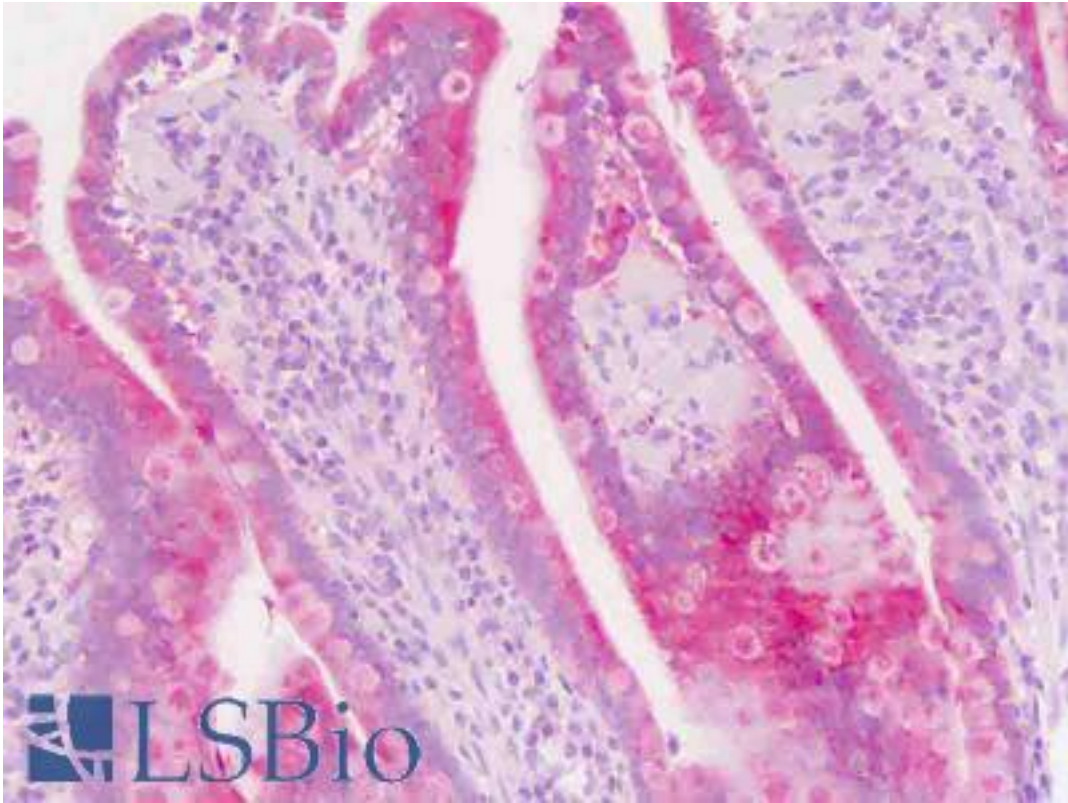


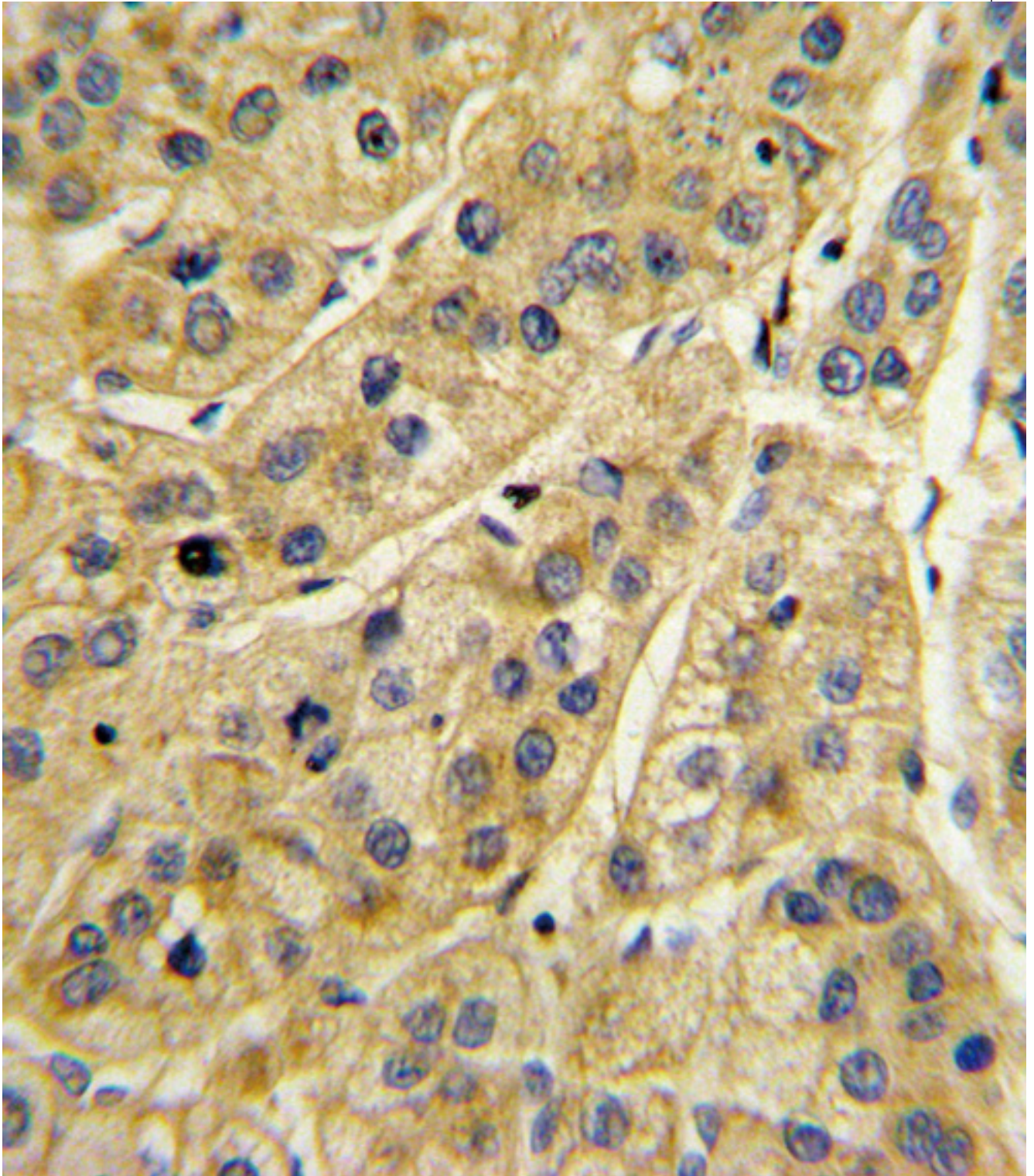
MICA Rabbit anti-Human Polyclonal (aa75-105) Antibody - LS-B9176 - LSBio	
<b>CatalogID:</b>	LS-B9176
<b>Validation:</b>	This antibody replaces catalog number LS-C164186. It has been validated for use in the following assays: IHC-P.
<b>Target:</b>	MHC class I polypeptide-related sequence A (MICA)
<b>Synonyms:</b>	MICA Antibody, HLA class I antigen Antibody, MIC-A Antibody, PERB11.1 Antibody
<b>Host</b>	MICA antibody was produced in Rabbit
<b>Clonality:</b>	Polyclonal
<b>Immunogen Species:</b>	MICA antibody was raised against Human
<b>Antigen Type:</b>	Synthetic peptide
<b>Immunogen:</b>	MICA antibody was raised against kLH-conjugated synthetic peptide from internal region of human MICA.
<b>Specificity:</b>	Human MICA
<b>Epitope:</b>	aa75-105
<b>Reactivity:</b>	Human
<b>Purification:</b>	Immunoaffinity purified
<b>Presentation:</b>	PBS, 0.09% sodium azide
<b>Recommended Storage:</b>	Maintain refrigerated at 2-8°C for up to 6 months. For long term storage store at -20°C.
<b>Uses:</b>	IHC - Paraffin (5 µg/ml), Immunofluorescence (1:10 - 1:50), Western blot (1:1000), Flow Cytometry (1:10 - 1:50) (Optimal dilution to be determined by the researcher)
<b>Size:</b>	200 µl

**Immunohistochemistry Image:**



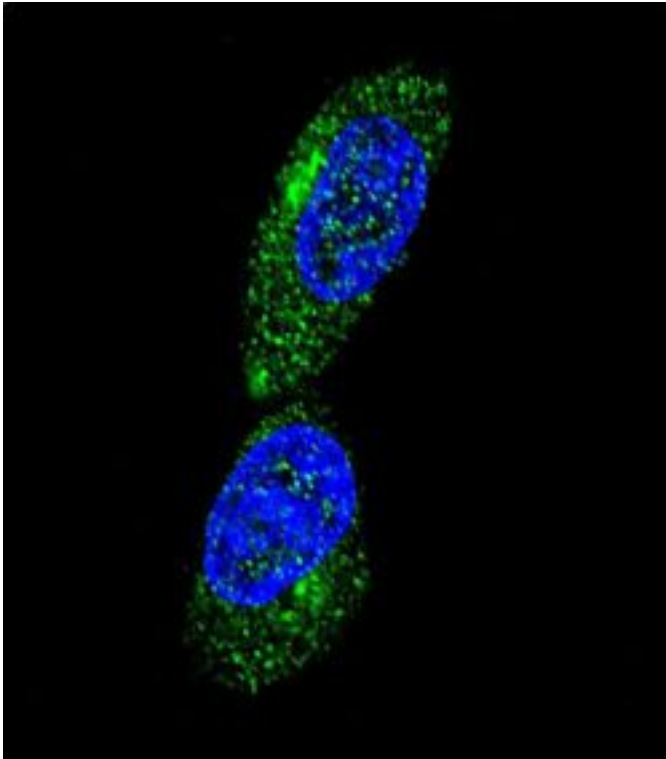
Human Small Intestine: Formalin-Fixed, Paraffin-Embedded (FFPE)

**Immunohistochemistry Image:**



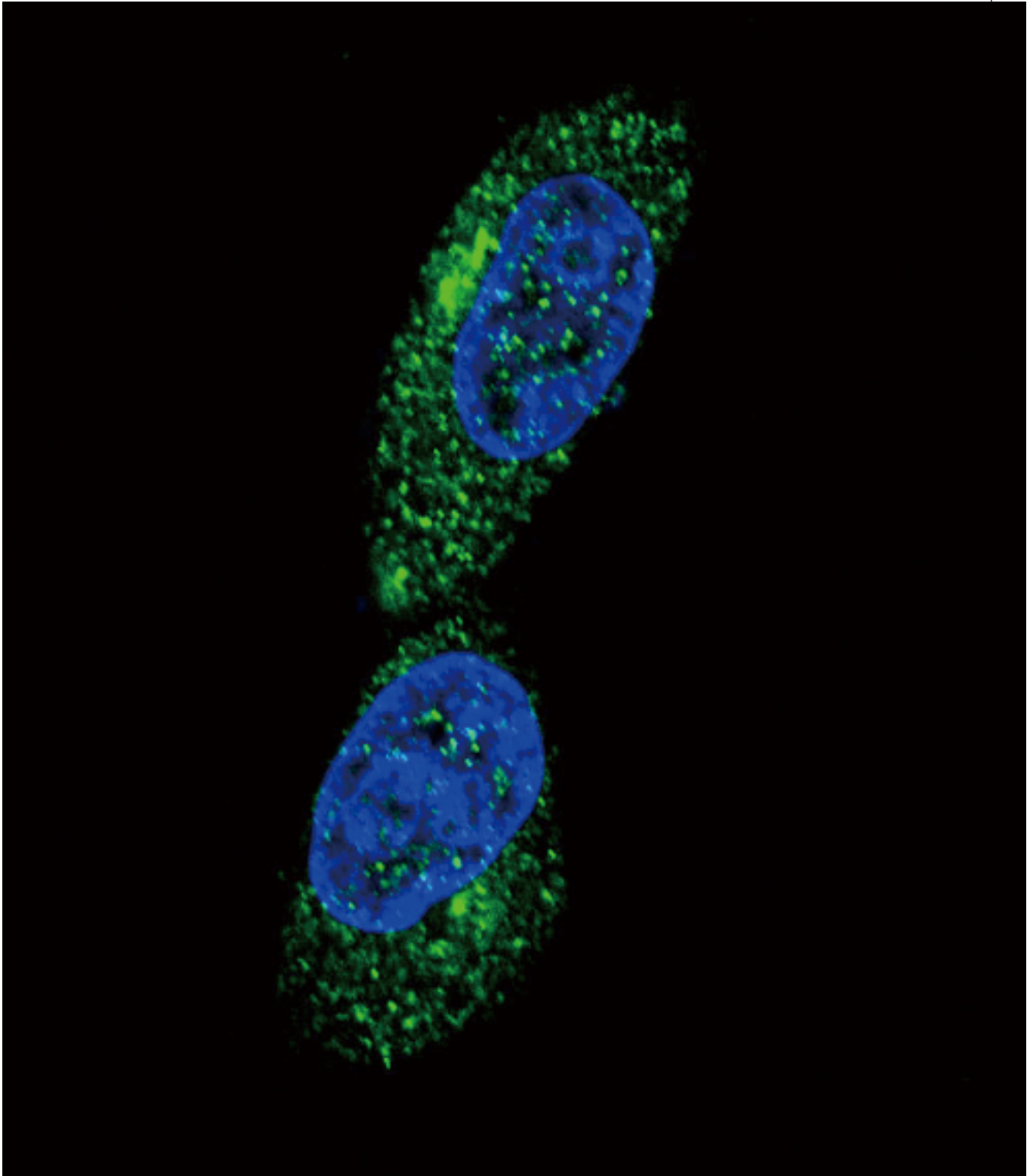
Formalin-fixed and paraffin-embedded human hepatocarcinoma with MICA Antibody (Center), which was peroxidase-conjugated to the secondary antibody, followed by DAB staining.

**Immunofluorescence Image:**



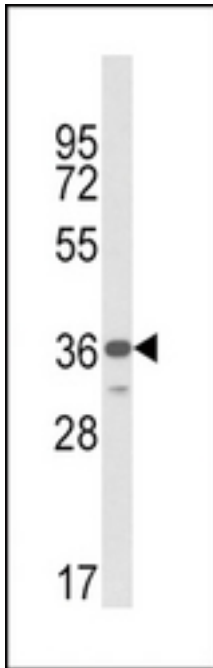
Confocal immunofluorescence of MICA Antibody (Center) with MDA-MB231 cell followed by Alexa Fluor 488-conjugated goat anti-rabbit IgG (green). DAPI was used to stain the cell nuclear (blue).

**Flow Cytometry Image:**



Flow cytometry of SK-Br-3 cells using MICA Antibody (Center)(bottom histogram) compared to a negative control cell (top histogram). FITC-conjugated goat-anti-rabbit secondary antibodies were used for the analysis.

**Western Blot Image:**



Western blot of MICA Antibody (Center) in MDA-MB231 cell line lysates (35 ug/lane). MICA (arrow) was detected using the purified Pab.

**Requested From:**

Japan

Laboratory Reagent For In Vitro Research Use Only

Not for resale without prior written consent from LifeSpan BioSciences, Inc.

Created on 9/24/2014

© 2014 LifeSpan BioSciences