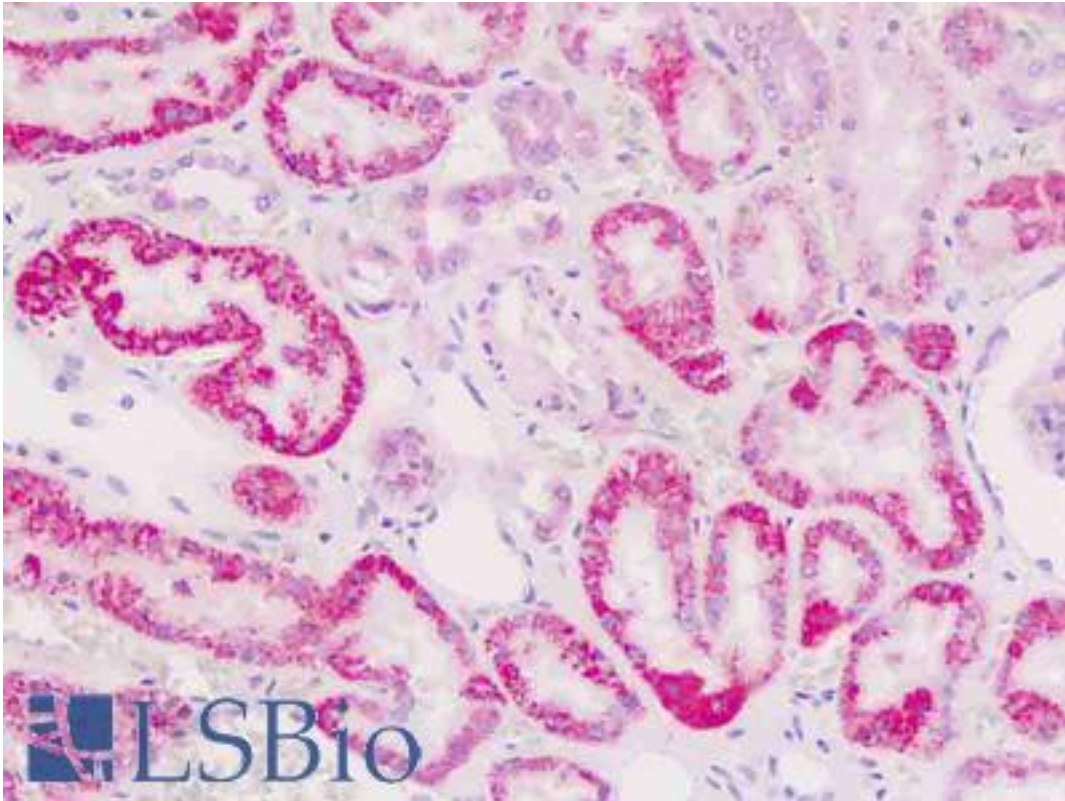


**CTNNA1 Rabbit anti-Human Polyclonal (N-Terminus) Antibody - LS-B9175 - LSBio**

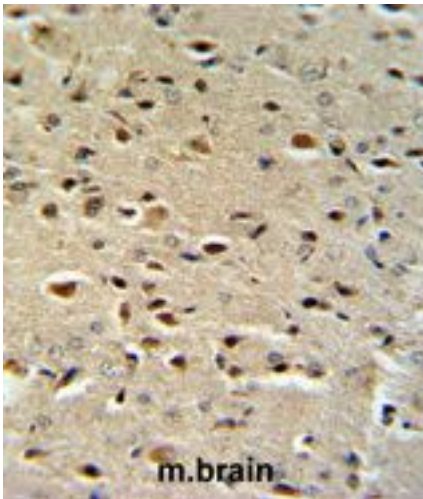
<b>CatalogID:</b>	LS-B9175
<b>Validation:</b>	This antibody replaces catalog number LS-C99313. It has been validated for use in the following assays: IHC-P.
<b>Target:</b>	catenin (cadherin-associated protein), alpha 1, 102kDa (CTNNA1)
<b>Synonyms:</b>	CTNNA1 Antibody, AlphaE-catenin Antibody, Alpha-E-catenin Antibody, Alpha(E)-catenin Antibody, Alpha-1 catenin Antibody, Alpha-catenin Antibody, Cadherin-associated protein Antibody, Alpha E-catenin Antibody, CAP102 Antibody, Catenin alpha-1 Antibody
<b>Family / Subfamily:</b>	Catenin / not assigned-Catenin
<b>Host</b>	CTNNA1 antibody was produced in Rabbit
<b>Clonality:</b>	Polyclonal
<b>Immunogen Species:</b>	CTNNA1 antibody was raised against Human
<b>Antigen Type:</b>	Synthetic peptide
<b>Immunogen:</b>	CTNNA1 antibody was raised against kLH conjugated synthetic peptide selected from the N-terminal region of human CTNA1.
<b>Epitope:</b>	N-Terminus
<b>Reactivity:</b>	Human, Mouse
<b>Purification:</b>	Ammonium sulfate precipitation
<b>Presentation:</b>	PBS, 0.09% sodium azide
<b>Recommended Storage:</b>	Maintain refrigerated at 2-8°C for up to 6 months. For long term storage store at -20°C.
<b>Uses:</b>	IHC - Paraffin (5 µg/ml), Western blot (1:1000), Flow Cytometry (1:10 - 1:50) (Optimal dilution to be determined by the researcher)
<b>Size:</b>	50 µg

**Immunohistochemistry Image:**



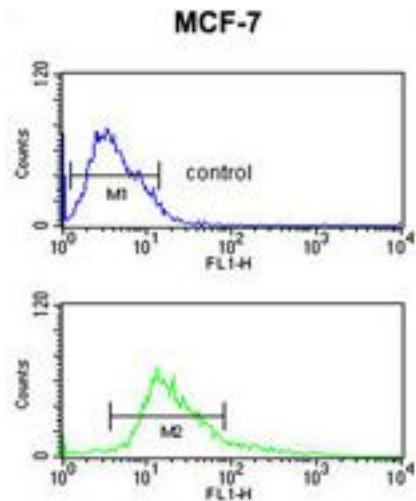
Human Kidney, Tubules: Formalin-Fixed, Paraffin-Embedded (FFPE)

**Immunohistochemistry Image:**



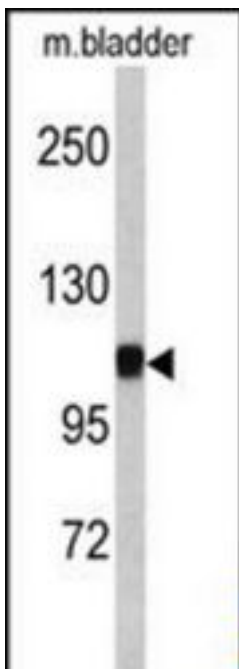
CTNA1 Antibody (N-term) IHC analysis in formalin fixed and paraffin embedded mouse brain tissue followed by peroxidase conjugation of the secondary antibody and DAB staining. This data demonstrates the use of the CTNA1 Antibody (N-term) for immunohistochemistry.

### Flow Cytometry Image:



CTNA1 Antibody (N-term) flow cytometry of MCF-7 cells (bottom histogram) compared to a negative control cell (top histogram). FITC-conjugated goat-anti-rabbit secondary antibodies were used for the analysis.

### Western Blot Image:



Western blot of CTNA1 antibody (N-term) in mouse bladder tissue lysates (35 ug/lane). CTNA1 (arrow) was detected using the purified Pab.

Requested From:

Japan

Laboratory Reagent For In Vitro Research Use Only

Not for resale without prior written consent from LifeSpan BioSciences, Inc.

Created on 9/24/2014

© 2014 LifeSpan BioSciences