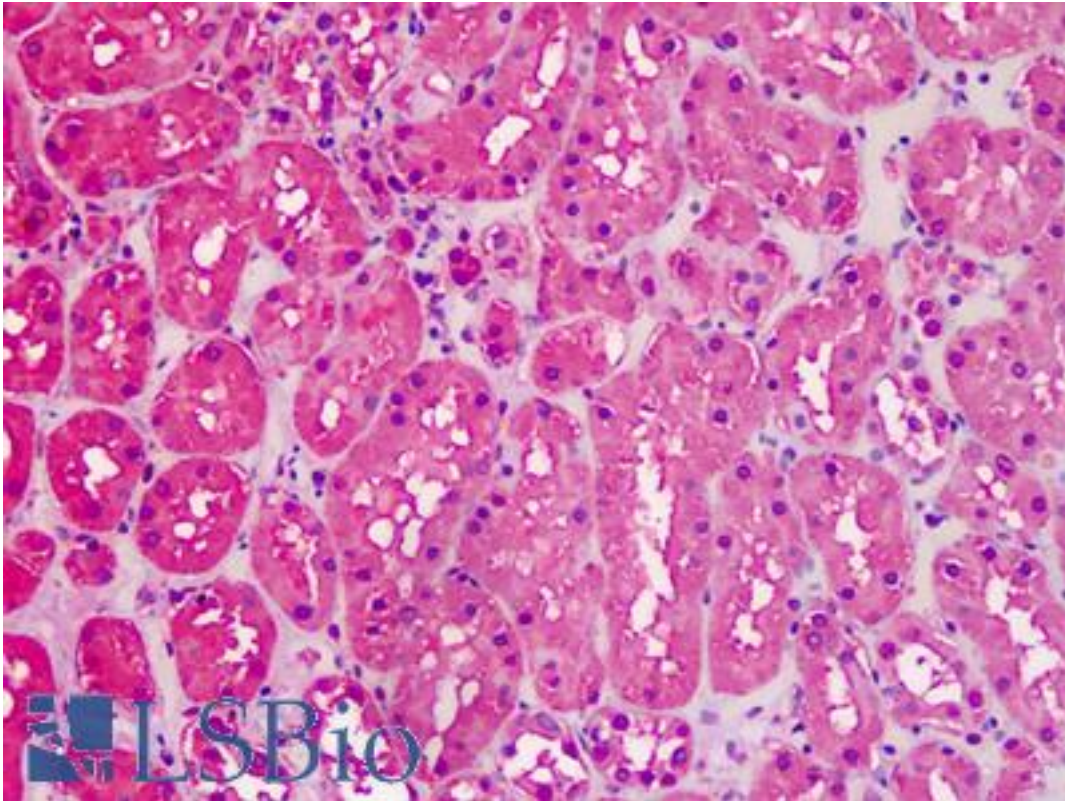


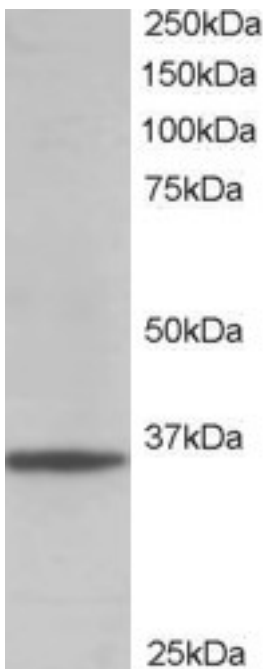
GAPDH Goat anti-Human Polyclonal (C-Terminus) Antibody - LS-B9169 - LSBio	
<b>CatalogID:</b>	LS-B9169
<b>Validation:</b>	This antibody replaces catalog number LS-C20160. It has been validated for use in the following assays: IHC-P.
<b>Target:</b>	glyceraldehyde-3-phosphate dehydrogenase (GAPDH)
<b>Synonyms:</b>	GAPDH Antibody, A1 40 kd subunit Antibody, Activator 1 40 kd subunit Antibody, G3PD Antibody, GAPD Antibody, G3pdh Antibody, Rfc40 Antibody, Rf-c 40 kd subunit Antibody
<b>Host</b>	GAPDH antibody was produced in Goat
<b>Clonality:</b>	Polyclonal
<b>Immunogen Species:</b>	GAPDH antibody was raised against Human
<b>Antigen Type:</b>	Synthetic peptide
<b>Immunogen:</b>	GAPDH antibody was raised against synthetic peptide C-HQVVSSDFNSDT from the C-terminus of human GAPDH (NP_002037.2). Percent identity by BLAST analysis: Human, Gorilla, Gibbon, Monkey, Marmoset (100%); Orangutan, Galago (92%); Ferret, Sheep, Hamster, Bat, Bovine, Dog, Cat, Horse, Pig, Opossum, Guinea pig, Platypus, Catfish, Salmon, Smelt (83%).
<b>Specificity:</b>	Human GAPDH. GAPDH is constitutively expressed in almost all tissues at high levels. It is therefore a useful marker when a loading/positive control is required in western blotting.
<b>Epitope:</b>	C-Terminus
<b>Reactivity:</b>	Human, Gorilla, Gibbon, Monkey
<b>Predicted Reactivity:</b>	Orangutan
<b>Purification:</b>	Immunoaffinity purified
<b>Presentation:</b>	Tris-buffered saline, pH 7.3, 0.5% BSA, 0.02% sodium azide
<b>Recommended Storage:</b>	Store at -20°C. Minimize freezing and thawing.
<b>Uses:</b>	IHC - Paraffin (2.5 - 5 µg/ml), Western blot (0.01 - 0.03 µg/ml), ELISA (1:2000) (Optimal dilution to be determined by the researcher)
<b>Size:</b>	50 µg
<b>Concentration:</b>	0.5 mg/ml

**Immunohistochemistry Image:**



Human Kidney: Formalin-Fixed, Paraffin-Embedded (FFPE)

**Western Blot Image:**



Staining (0.01 ug/ml) of 293 lysate (RIPA buffer, 35 ug total protein per lane). Primary incubated for 1 hour. Detected using chemiluminescence.

**Requested From:**

Japan

Laboratory Reagent For In Vitro Research Use Only

Not for resale without prior written consent from LifeSpan BioSciences, Inc.

Created on 9/24/2014

© 2014 LifeSpan BioSciences