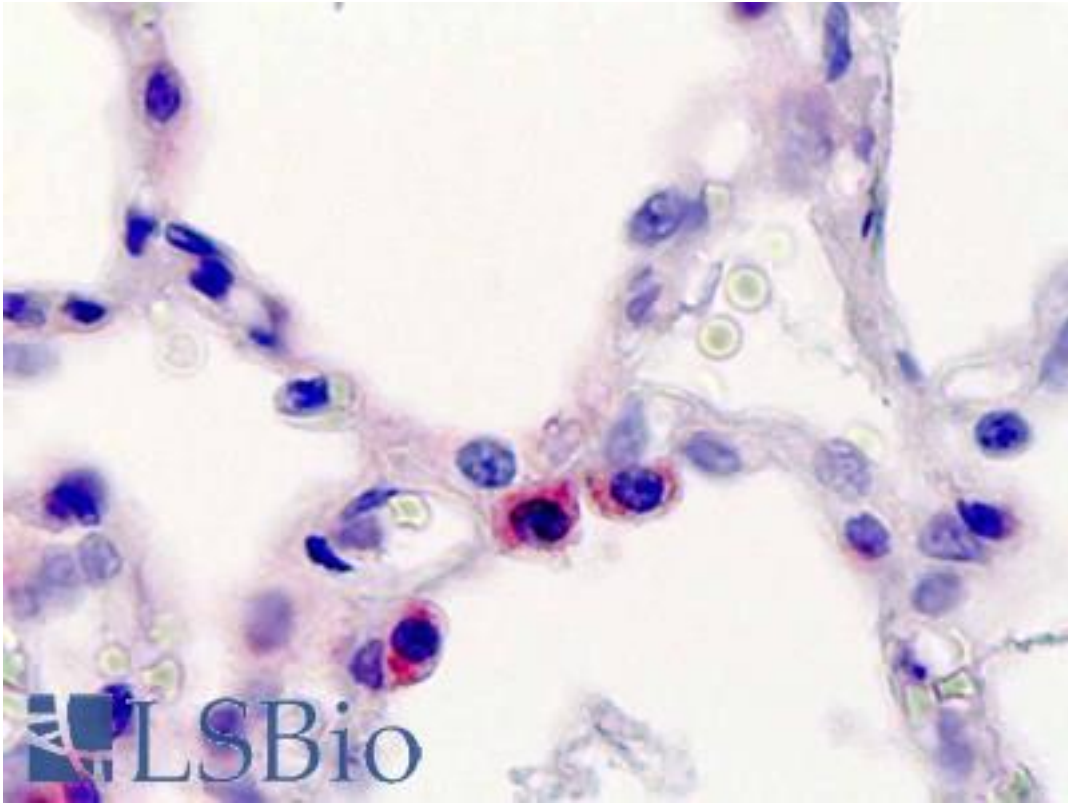


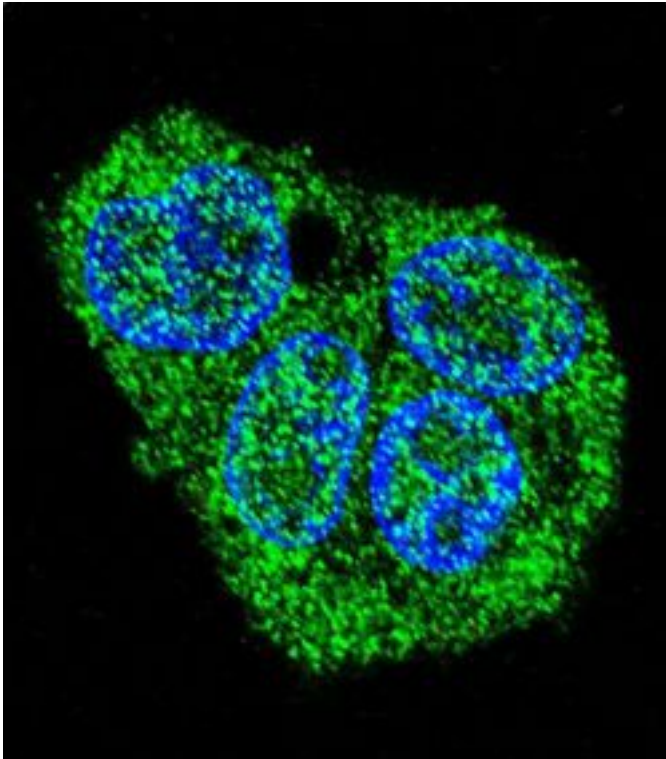
SFTPC / Surfactant Protein C Rabbit anti-Human Polyclonal (aa143-173) Antibody - LS-B9161 - LSBio	
CatalogID:	LS-B9161
Validation:	This antibody replaces catalog number LS-C169036. It has been validated for use in the following assays: IHC-P.
Target:	surfactant protein C (SFTPC)
Synonyms:	SFTPC Antibody, BRICD6 Antibody, PSP-C Antibody, Pulmonary surfactant protein C Antibody, SMDP2 Antibody, SFTP2 Antibody, SP-C Antibody, Surfactant protein C Antibody
Host	SFTPC antibody was produced in Rabbit
Clonality:	Polyclonal
Immunogen Species:	SFTPC / Surfactant Protein C antibody was raised against Human
Antigen Type:	Synthetic peptide
Immunogen:	SFTPC / Surfactant Protein C antibody was raised against kLH-conjugated synthetic peptide from C-terminal region of human SFTPC.
Epitope:	aa143-173
Reactivity:	Human
Purification:	Immunoaffinity purified
Presentation:	PBS with 0.09% (w/v) sodium azide
Recommended Storage:	Maintain refrigerated at 2-8°C for up to 6 months. For long term storage store at -20°C.
Uses:	IHC - Paraffin (10 µg/ml), Immunofluorescence (1:10 - 1:50), Western blot (1:1000) (Optimal dilution to be determined by the researcher)
Size:	50 µg

Immunohistochemistry Image:



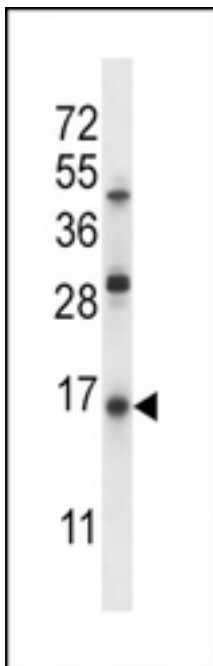
Human, Lung, Type 2 pneumocytes: Formalin-Fixed Paraffin-Embedded (FFPE)

Immunofluorescence Image:



Confocal immunofluorescence of SFTPC Antibody (C-term) with HepG2 cell followed by Alexa Fluor 488-conjugated goat anti-rabbit IgG (green). DAPI was used to stain the cell nuclear (blue).

Western Blot Image:



SFTPC Antibody (C-term) Western blot of Jurkat cell line lysates (35 ug/lane). This demonstrates the SFTPC antibody detected the SFTPC protein (arrow).

Requested From:

Japan

Laboratory Reagent For In Vitro Research Use Only

Not for resale without prior written consent from LifeSpan BioSciences, Inc.

Created on 9/24/2014

© 2014 LifeSpan BioSciences