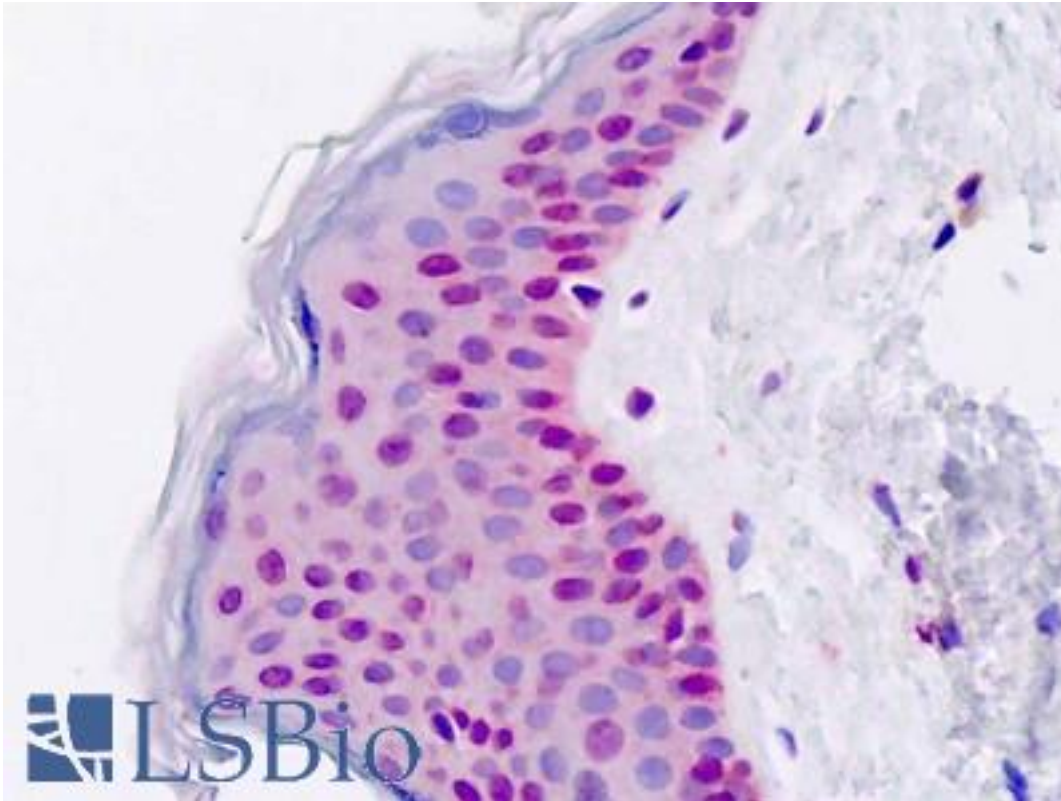


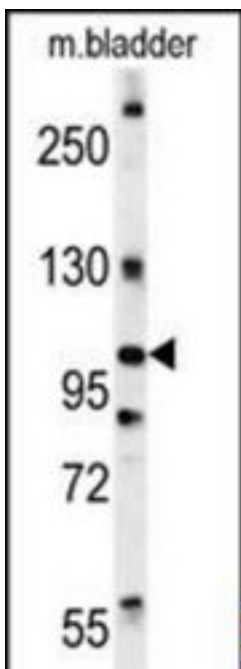
DIS3 Rabbit anti-Human Polyclonal (aa302-331) Antibody - LS-B9159 - LSBio	
CatalogID:	LS-B9159
Validation:	This antibody replaces catalog number LS-C167422. It has been validated for use in the following assays: IHC-P.
Target:	DIS3 mitotic control homolog (<i>S. cerevisiae</i>)
Synonyms:	DIS3 Antibody, Dis3p Antibody, EXOSC11 Antibody, Exosome component 11 Antibody, KIAA1008 Antibody, RRP44 Antibody, Protein DIS3 homolog Antibody, BA555G22.1 Antibody, RP11-342J4.3 Antibody
Host	DIS3 antibody was produced in Rabbit
Clonality:	Polyclonal
Immunogen Species:	DIS3 antibody was raised against Human
Antigen Type:	Synthetic peptide
Immunogen:	DIS3 antibody was raised against kLH-conjugated synthetic peptide from internal region of human DIS3.
Epitope:	aa302-331
Reactivity:	Human, Mouse
Purification:	Immunoaffinity purified
Presentation:	PBS with 0.09% (w/v) sodium azide
Recommended Storage:	Maintain refrigerated at 2-8°C for up to 6 months. For long term storage store at -20°C.
Uses:	IHC - Paraffin (5 µg/ml), Western blot (1:1000) (Optimal dilution to be determined by the researcher)
Size:	200 µl

Immunohistochemistry Image:



Human, Skin; Formalin-Fixed Paraffin-Embedded (FFPE)

Western Blot Image:



DIS3 Antibody (Center) Western blot of mouse bladder tissue lysates (15 ug/lane). This demonstrates the DIS3 antibody detected DIS3 protein (arrow).

Requested From:

Japan

Laboratory Reagent For In Vitro Research Use Only

Not for resale without prior written consent from LifeSpan BioSciences, Inc.

Created on 9/24/2014

© 2014 LifeSpan BioSciences