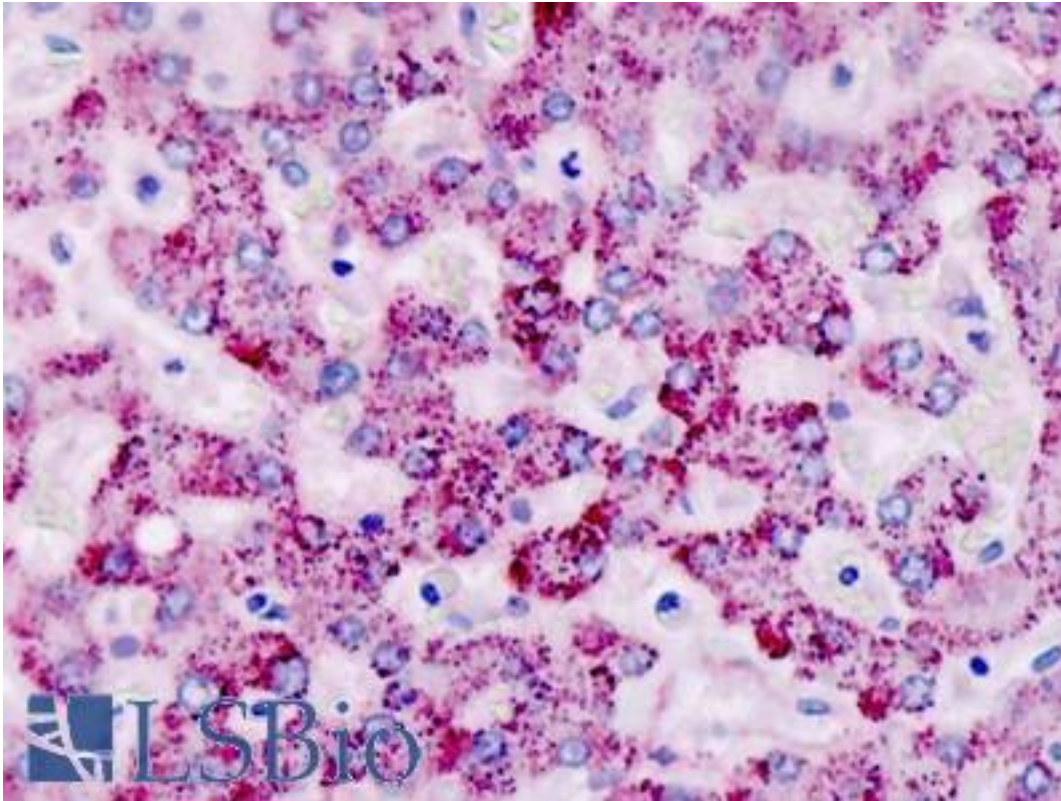


**CAPNS2 Rabbit anti-Human Polyclonal (aa55-83) Antibody - LS-B9156 - LSBio**

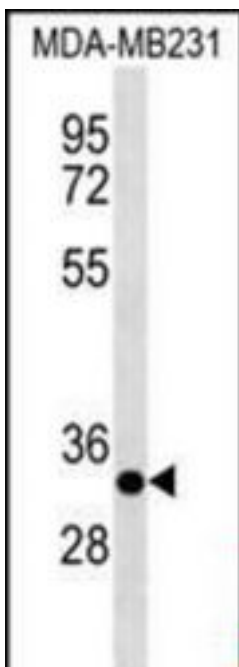
<b>CatalogID:</b>	LS-B9156
<b>Validation:</b>	This antibody replaces catalog number LS-C159264. It has been validated for use in the following assays: IHC-P.
<b>Target:</b>	calpain, small subunit 2 (CAPNS2)
<b>Synonyms:</b>	CAPNS2 Antibody, Calpain, small subunit 2 Antibody, Calpain small subunit 2 Antibody, CSS2 Antibody
<b>Host</b>	CAPNS2 antibody was produced in Rabbit
<b>Clonality:</b>	Polyclonal
<b>Immunogen Species:</b>	CAPNS2 antibody was raised against Human
<b>Antigen Type:</b>	Synthetic peptide
<b>Immunogen:</b>	CAPNS2 antibody was raised against kLH-conjugated synthetic peptide from internal region of human CAPNS2.
<b>Epitope:</b>	aa55-83
<b>Reactivity:</b>	Human, Mouse
<b>Purification:</b>	Immunoaffinity purified
<b>Presentation:</b>	PBS with 0.09% (w/v) sodium azide
<b>Recommended Storage:</b>	Maintain refrigerated at 2-8°C for up to 6 months. For long term storage store at -20°C.
<b>Uses:</b>	IHC - Paraffin (5 µg/ml), Western blot (1:1000) (Optimal dilution to be determined by the researcher)
<b>Size:</b>	200 µl

**Immunohistochemistry Image:**



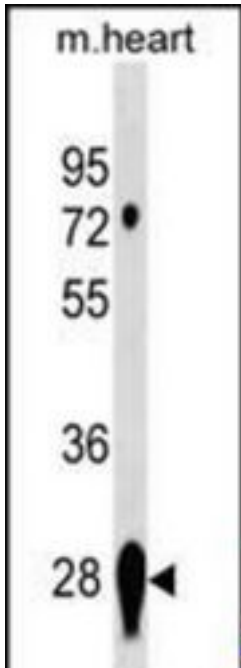
Human, Liver: Formalin-Fixed Paraffin-Embedded (FFPE)

**Western Blot Image:**



CAPNS2 Antibody (Center) Western blot of MDA-MB231 cell line lysates (35 ug/lane). This demonstrates the CAPNS2 antibody detected the CAPNS2 protein (arrow).

**Western Blot Image:**



CAPNS2 Antibody (Center) Western blot of mouse heart tissue lysates (35 ug/lane). This demonstrates the CAPNS2 antibody detected the CAPNS2 protein (arrow).

**Requested From:**

Japan

Laboratory Reagent For In Vitro Research Use Only

Not for resale without prior written consent from LifeSpan BioSciences, Inc.

Created on 9/24/2014

© 2014 LifeSpan BioSciences