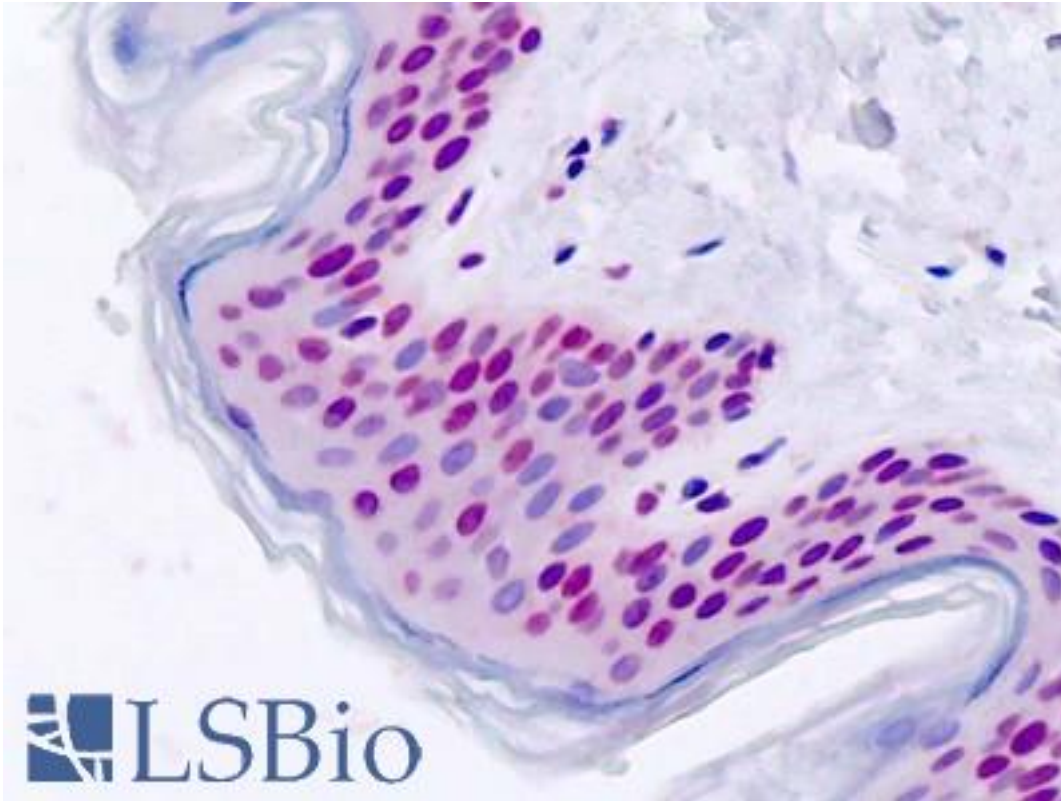


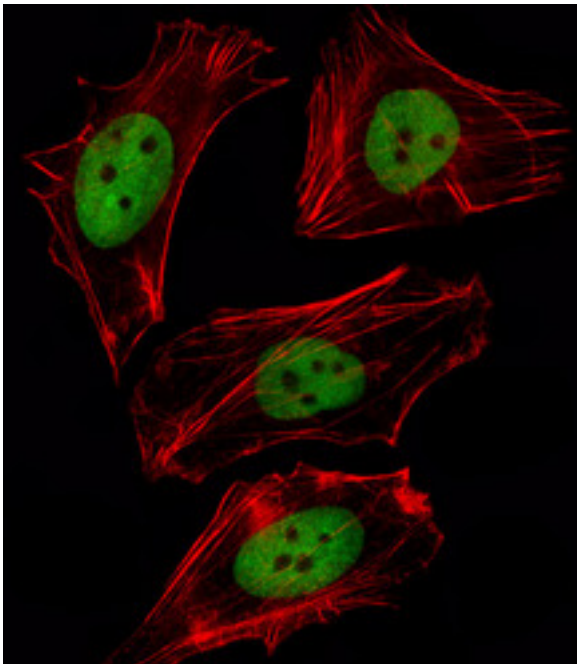
FOXD1 Rabbit anti-Human Polyclonal (aa1-30) Antibody - LS-B9155 - LSBio	
CatalogID:	LS-B9155
Validation:	This antibody replaces catalog number LS-C166219. It has been validated for use in the following assays: IHC-P.
Target:	forkhead box D1 (FOXD1)
Synonyms:	FOXD1 Antibody, Forkhead-like 8 Antibody, FREAC-4 Antibody, FREAC4 Antibody, Forkhead box protein D1 Antibody, Forkhead box D1 Antibody, Forkhead-related activator 4 Antibody, Forkhead-related protein FKHL8 Antibody
Family / Subfamily:	Transcription factor / not assigned-Transcription factor
Host	FOXD1 antibody was produced in Rabbit
Clonality:	Polyclonal
Immunogen Species:	FOXD1 antibody was raised against Human
Antigen Type:	Synthetic peptide
Immunogen:	FOXD1 antibody was raised against kLH-conjugated synthetic peptide from N-terminal region of human FOXD1.
Epitope:	aa1-30
Reactivity:	Human
Purification:	Immunoaffinity purified
Presentation:	PBS with 0.09% (w/v) sodium azide
Recommended Storage:	Maintain refrigerated at 2-8°C for up to 6 months. For long term storage store at -20°C.
Uses:	IHC - Paraffin (5 µg/ml), Immunofluorescence (1:10 - 1:50), Western blot (1:1000) (Optimal dilution to be determined by the researcher)
Size:	200 µl

Immunohistochemistry Image:



Human, Skin: Formalin-Fixed Paraffin-Embedded (FFPE)

Western Blot Image:



FOXD1 Antibody (N-term) Western blot of HepG2 cell line lysates (35 ug/lane). This demonstrates the FOXD1 antibody detected the FOXD1 protein (arrow).

Requested From:

Japan

Laboratory Reagent For In Vitro Research Use Only

Not for resale without prior written consent from LifeSpan BioSciences, Inc.

Created on 9/24/2014

© 2014 LifeSpan BioSciences