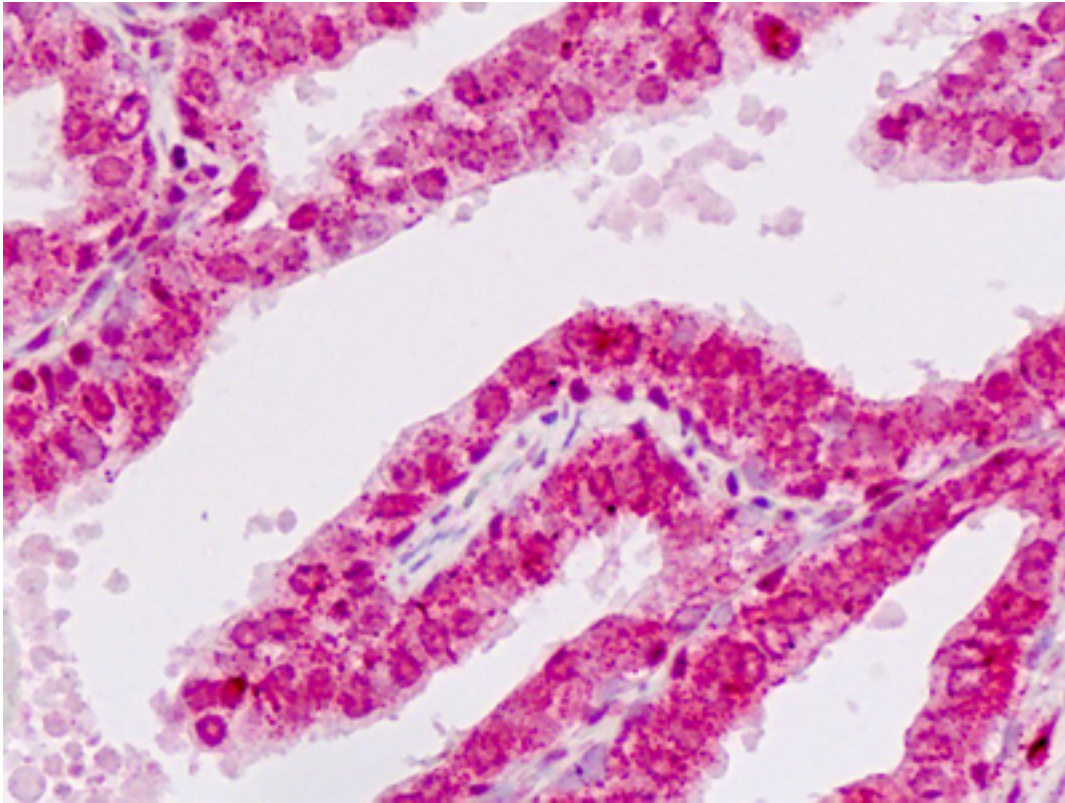


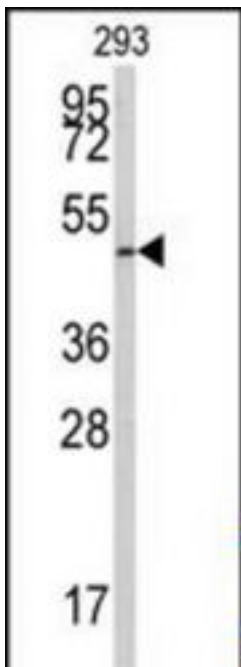
E2F1 Rabbit anti-Human Polyclonal (Ser332) Antibody - LS-B9117 - LSBio	
<b>CatalogID:</b>	LS-B9117
<b>Validation:</b>	This antibody replaces catalog number LS-C100229. It has been validated for use in the following assays: IHC-P.
<b>Target:</b>	E2F transcription factor 1 (E2F1)
<b>Synonyms:</b>	E2F1 Antibody, E2F transcription factor 1 Antibody, PRB-binding protein E2F-1 Antibody, RBAP-1 Antibody, RBBP3 Antibody, RBBP-3 Antibody, Transcription factor E2F1 Antibody, RBAP1 Antibody, E2F-1 Antibody, PBR3 Antibody
<b>Host</b>	E2F1 antibody was produced in Rabbit
<b>Clonality:</b>	Polyclonal
<b>Immunogen Species:</b>	E2F1 antibody was raised against Human
<b>Antigen Type:</b>	Synthetic peptide
<b>Immunogen:</b>	E2F1 antibody was raised against kLH conjugated synthetic peptide corresponding to amino acid residues surrounding S332 of human E2F1.
<b>Epitope:</b>	Ser332
<b>Reactivity:</b>	Human
<b>Purification:</b>	Immunoaffinity purified
<b>Presentation:</b>	PBS with 0.09% (w/v) sodium azide
<b>Recommended Storage:</b>	Maintain refrigerated at 2-8°C for up to 6 months. For long term storage store at -20°C.
<b>Uses:</b>	IHC - Paraffin (10 µg/ml), Western blot (1:1000) (Optimal dilution to be determined by the researcher)
<b>Size:</b>	200 µl

**Immunohistochemistry Image:**



Human Prostate: Formalin-Fixed, Paraffin-Embedded (FFPE)

**Western Blot Image:**



Western blot of anti-E2F1 Antibody (S332) LS-B9117 in 293 cell line lysates (35 ug/lane). E2F1 (arrow) was detected using the purified Pab (1:60dilution).

**Requested From:**

Japan

Laboratory Reagent For In Vitro Research Use Only

Not for resale without prior written consent from LifeSpan BioSciences, Inc.

Created on 9/24/2014

© 2014 LifeSpan BioSciences