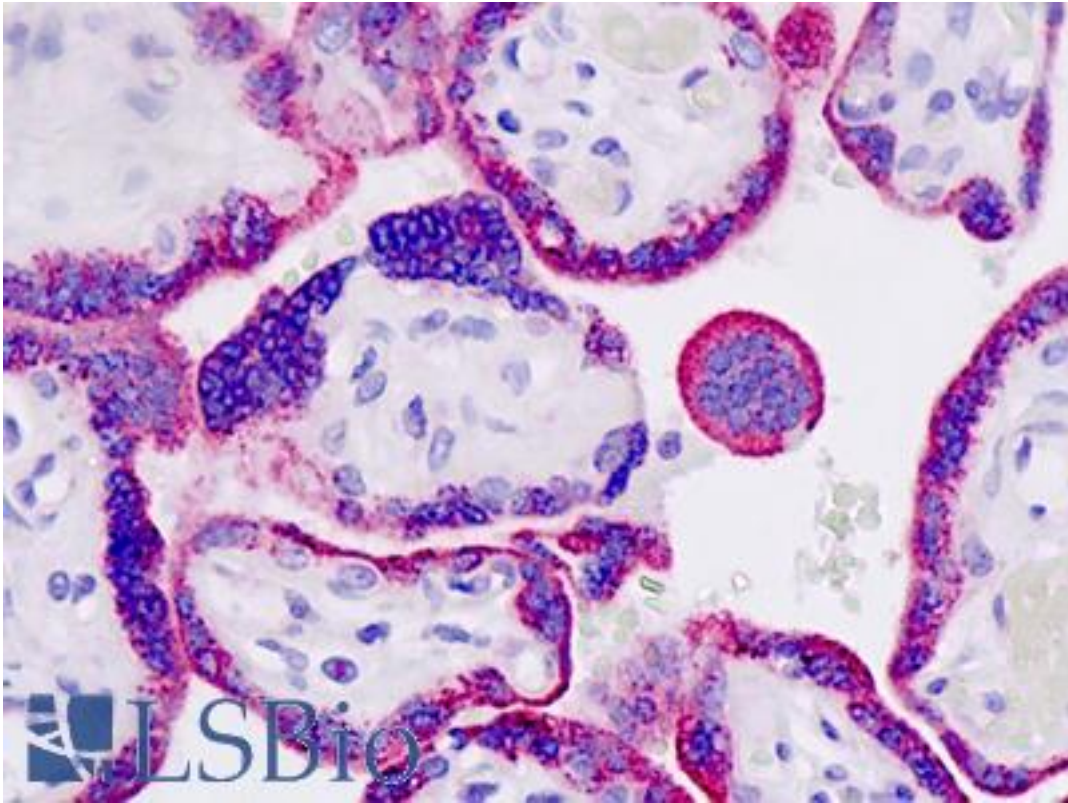


MAP4K3 / GLK Rabbit anti-Mouse Polyclonal (aa500-529) Antibody - LS-B9106 - LSBio

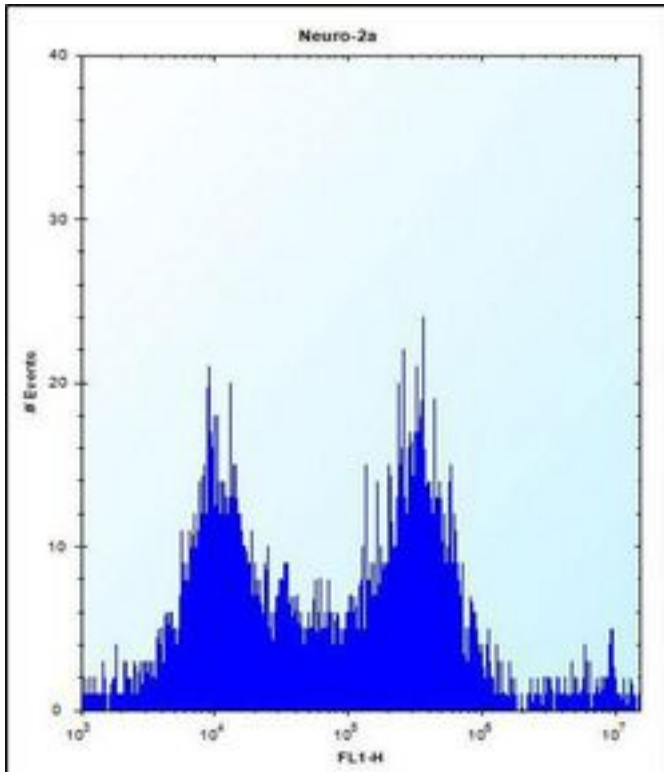
CatalogID:	LS-B9106
Validation:	This antibody replaces catalog number LS-C164461. It has been validated for use in the following assays: IHC-P.
Target:	mitogen-activated protein kinase kinase kinase kinase 3 (MAP4K3)
Synonyms:	MAP4K3 Antibody, MEK kinase kinase 3 Antibody, RAB8IPL1 Antibody, MEKKK 3 Antibody, MEKKK3 Antibody, GCK-like kinase Antibody, GLK Antibody, MAPKKKKK3 Antibody
Family / Subfamily:	Protein Kinase / KHS
Host	MAP4K3 antibody was produced in Rabbit
Clonality:	Polyclonal
Immunogen Species:	MAP4K3 / GLK antibody was raised against Mouse
Antigen Type:	Synthetic peptide
Immunogen:	MAP4K3 / GLK antibody was raised against kLH-conjugated synthetic peptide from internal region of Mouse Map4k3.
Specificity:	Mouse MAP4K3 / GLK
Epitope:	aa500-529
Reactivity:	Mouse, Human
Purification:	Immunoaffinity purified
Presentation:	PBS, 0.09% sodium azide
Recommended Storage:	Maintain refrigerated at 2-8°C for up to 6 months. For long term storage store at -20°C.
Uses:	IHC - Paraffin (5 µg/ml), Western blot (1:1000), Flow Cytometry (1:10 - 1:50) (Optimal dilution to be determined by the researcher)
Size:	200 µl

Immunohistochemistry Image:



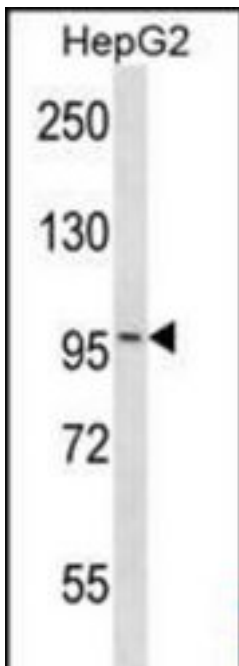
Human Placenta: Formalin-Fixed, Paraffin-Embedded (FFPE)

Flow Cytometry Image:



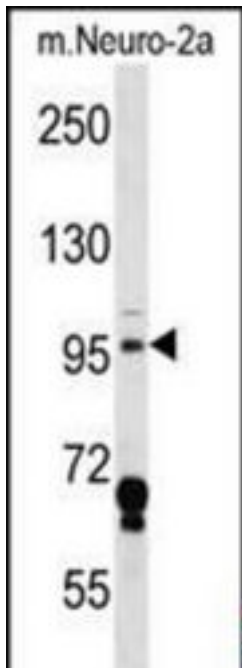
Mouse Map4k3 Antibody (Center) flow cytometry of Neuro-2a cells (right histogram) compared to a negative control cell (left histogram). FITC-conjugated donkey-anti-rabbit secondary antibodies were used for the analysis.

Western Blot Image:



Mouse Map4k3 Antibody (Center) Western blot of HepG2 cell line lysates (35 ug/lane). This demonstrates the Map4k3 antibody detected the Map4k3 protein (arrow).

Western Blot Image:



Mouse Map4k3 Antibody (Center) Western blot of mouse Neuro-2a cell line lysates (35 ug/lane). This demonstrates the Map4k3 antibody detected the Map4k3 protein (arrow).

Requested From:

Japan

Laboratory Reagent For In Vitro Research Use Only

Not for resale without prior written consent from LifeSpan BioSciences, Inc.

Created on 9/24/2014

© 2014 LifeSpan BioSciences