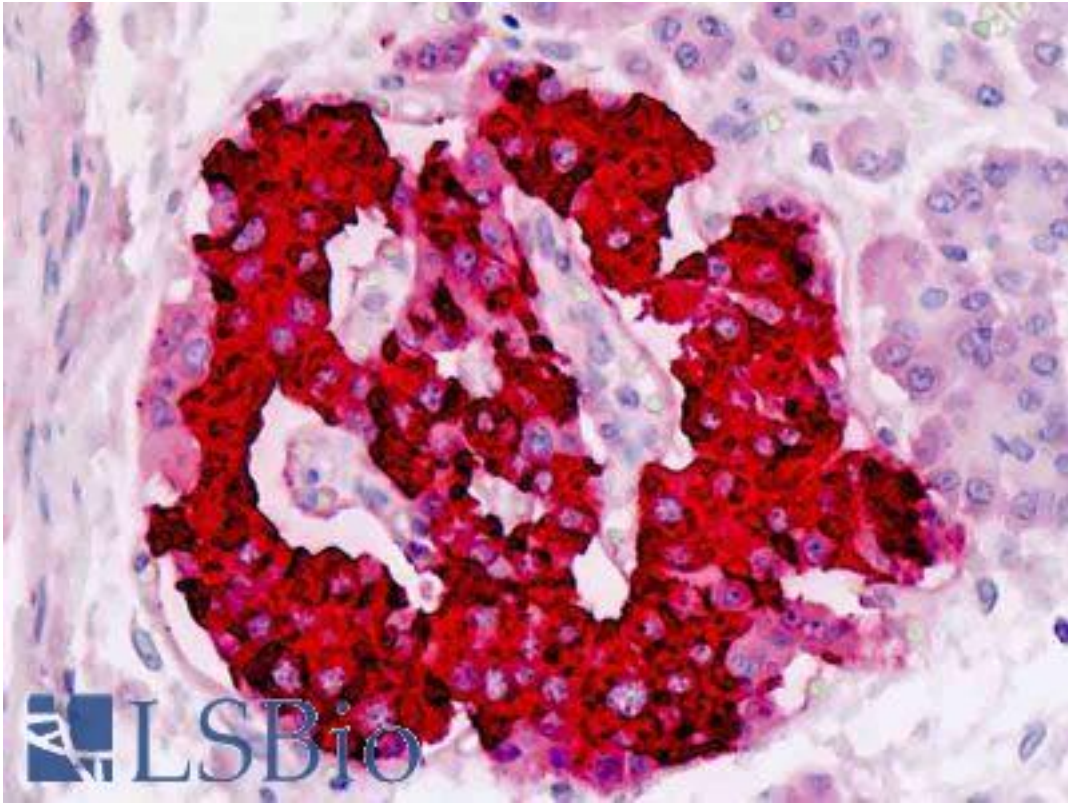


Insulin Mouse anti-Human Monoclonal (E2E3) Antibody - LS-B9087 - LSBio	
CatalogID:	LS-B9087
Validation:	This antibody replaces catalog number LS-C11610. It has been validated for use in the following assays: IHC-P.
Target:	insulin
Synonyms:	INS Antibody, IRDN Antibody, IDDM2 Antibody, Preproinsulin Antibody, ILPR Antibody, Insulin Antibody, MODY10 Antibody, Proinsulin Antibody
Family / Subfamily:	Hormone / not assigned-Hormone
Host	INS antibody was produced in Mouse
Clonality:	Monoclonal
Isotype:	IgG1
Clone Name:	E2E3
Immunogen Species:	Insulin antibody was raised against Human
Immunogen:	Insulin antibody was raised against insulin conjugated to BSA.
Specificity:	Recognizes insulin, a major metabolic hormone produced by B cells of the pancreas
Reactivity:	Human, Bovine, Pig, Rabbit
Purification:	Purified IgG
Presentation:	PBS, 0.09% sodium azide, 0.1% BSA.
Recommended Storage:	Short term 4°C, long term aliquot and store at -20°C, avoid freeze thaw cycles. Store undiluted.
Usage Summary:	Immunohistology: This product does not require protein digestion pre-treatment of paraffin sections. This product does not require antigen retrieval using heat treatment prior to staining of paraffin sections.
Uses:	IHC - Paraffin (10 µg/ml), IHC - Frozen (1:50 - 1:100), ELISA (Optimal dilution to be determined by the researcher)
Size:	50 µg
Concentration:	1 mg/ml

Immunohistochemistry Image:



Human Insulin: Formalin-Fixed, Paraffin-Embedded (FFPE)

Requested From:

Japan

Laboratory Reagent For In Vitro Research Use Only

Not for resale without prior written consent from LifeSpan BioSciences, Inc.

Created on 8/22/2014

© 2014 LifeSpan BioSciences