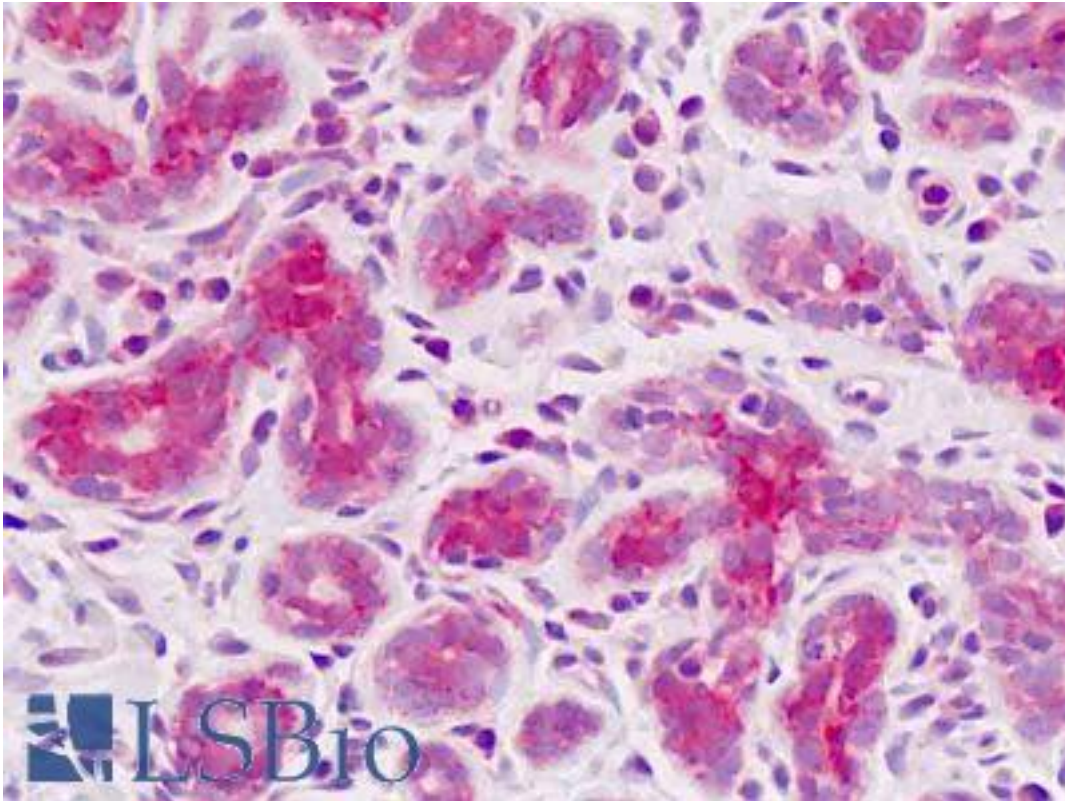


**SCAP Rabbit anti-Human Polyclonal (aa611-640) Antibody - LS-B9086 - LSBio**

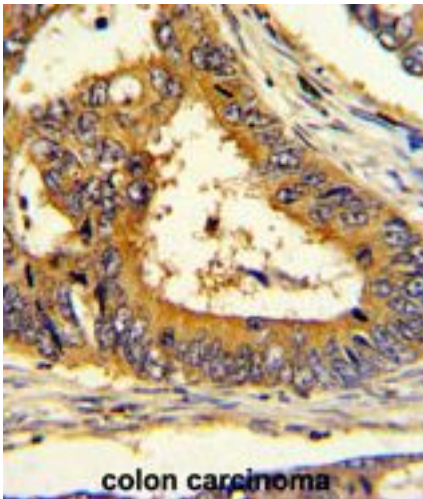
<b>CatalogID:</b>	LS-B9086
<b>Validation:</b>	This antibody replaces catalog number LS-C162886. It has been validated for use in the following assays: IHC-P.
<b>Target:</b>	SREBF chaperone (SCAP)
<b>Synonyms:</b>	SCAP Antibody, KIAA0199 Antibody, SREBF chaperone Antibody
<b>Host</b>	SCAP antibody was produced in Rabbit
<b>Clonality:</b>	Polyclonal
<b>Immunogen Species:</b>	SCAP antibody was raised against Human
<b>Antigen Type:</b>	Synthetic peptide
<b>Immunogen:</b>	SCAP antibody was raised against kLH-conjugated synthetic peptide from internal region of human SCAP.
<b>Specificity:</b>	Human SCAP
<b>Epitope:</b>	aa611-640
<b>Reactivity:</b>	Human
<b>Purification:</b>	Immunoaffinity purified
<b>Presentation:</b>	PBS, 0.09% sodium azide
<b>Recommended Storage:</b>	Maintain refrigerated at 2-8°C for up to 6 months. For long term storage store at -20°C.
<b>Uses:</b>	IHC - Paraffin (5 µg/ml), Immunofluorescence (1:100), Western blot (1:1000), Flow Cytometry (1:10 - 1:50) (Optimal dilution to be determined by the researcher)
<b>Size:</b>	50 µg

**Immunohistochemistry Image:**



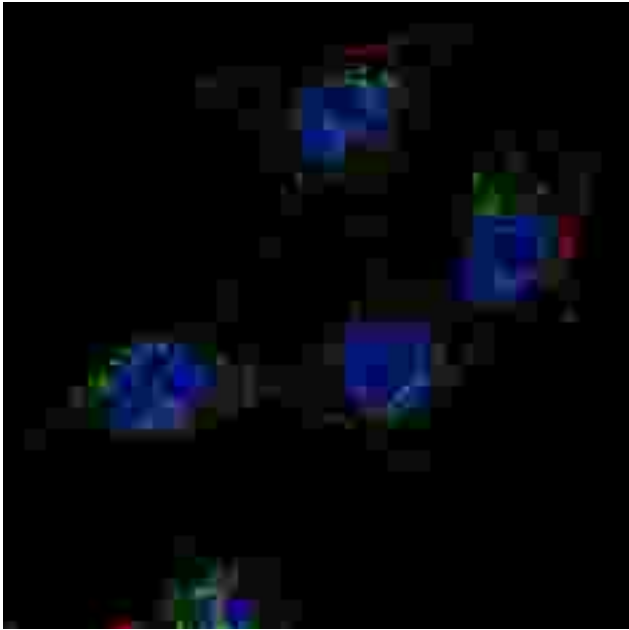
Human Breast: Formalin-Fixed, Paraffin-Embedded (FFPE)

**Immunohistochemistry Image:**



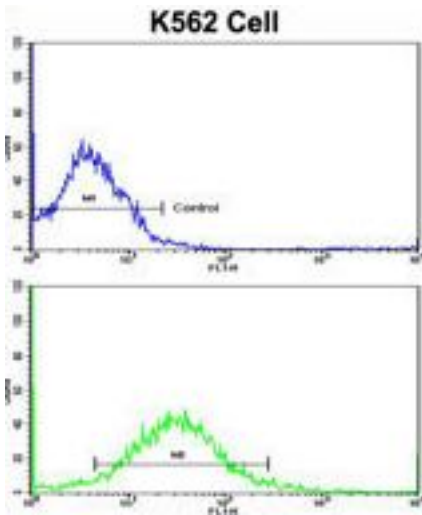
Formalin-fixed and paraffin-embedded human colon carcinoma with SCAP Antibody (Center), which was peroxidase-conjugated to the secondary antibody, followed by DAB staining.

### Immunofluorescence Image:



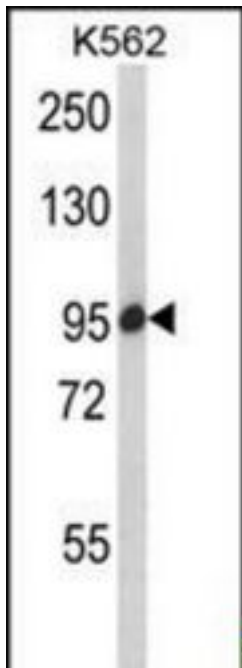
Fluorescent confocal image of HeLa cells stained with SCAP (Center) antibody. HeLa cells were fixed with 4% PFA (20 min), permeabilized with Triton X-100 (0.2%, 30 min). Cells were then incubated with SCAP (Center) primary antibody (1:100, 2 h at room temperature). For secondary antibody, Alexa Fluor 488 conjugated donkey anti-rabbit antibody (green) was used (1:1000, 1h). Nuclei were counterstained with Hoechst 33342 (blue) (10 ug/ml, 5 min).

### Flow Cytometry Image:



Flow cytometry of K562 cells using SCAP Antibody (Center)(bottom histogram) compared to a negative control cell (top histogram). FITC-conjugated goat-anti-rabbit secondary antibodies were used for the analysis.

**Western Blot Image:**



Western blot of SCAP Antibody (Center) in K562 cell line lysates (35 ug/lane). SCAP (arrow) was detected using the purified Pab.

**Requested From:**

Japan

Laboratory Reagent For In Vitro Research Use Only

Not for resale without prior written consent from LifeSpan BioSciences, Inc.

Created on 9/24/2014

© 2014 LifeSpan BioSciences