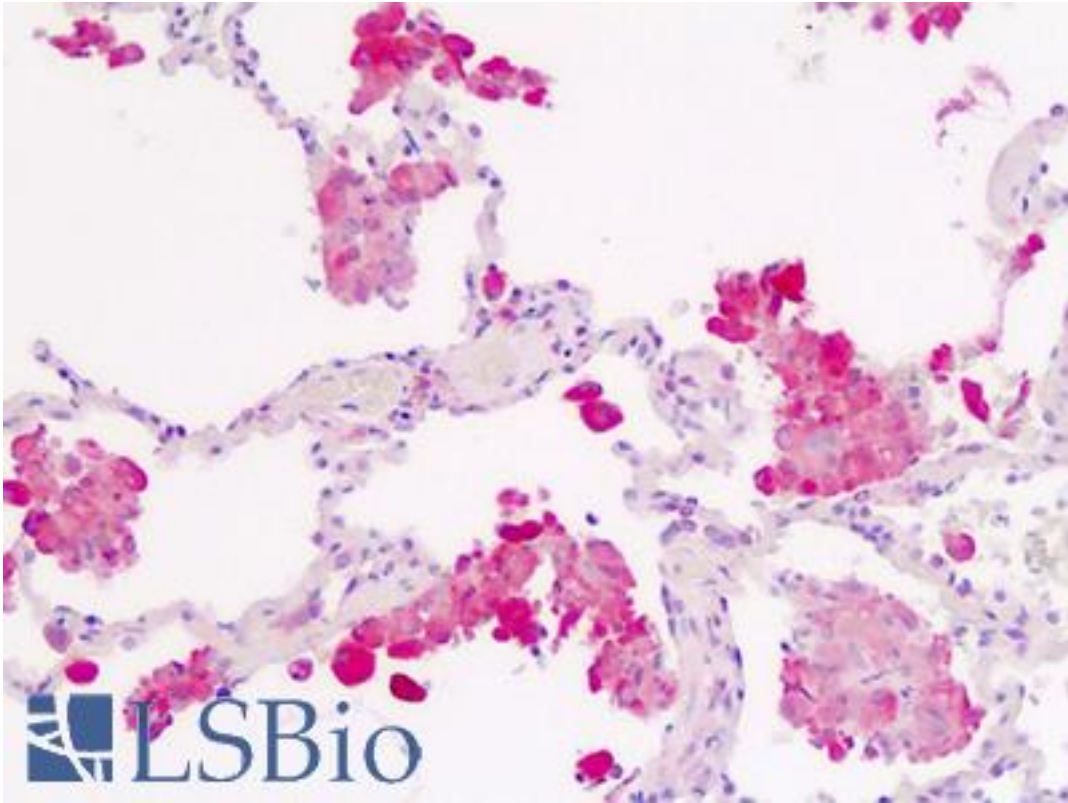


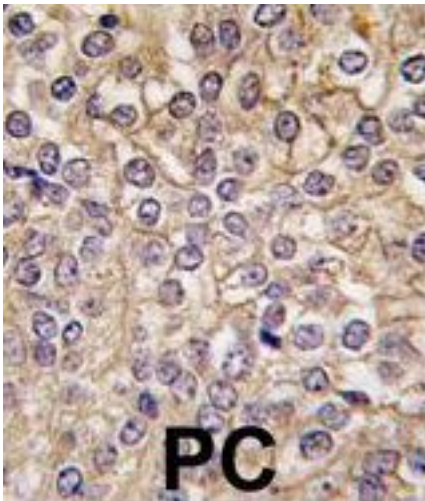
IL1RA / IL1R1 Rabbit anti-Human Polyclonal (C-Terminus) Antibody - LS-B9079 - LSBio	
CatalogID:	LS-B9079
Validation:	This antibody replaces catalog number LS-C100158. It has been validated for use in the following assays: IHC-P.
Target:	interleukin 1 receptor, type I (IL1R1)
Synonyms:	IL1R1 Antibody, Antigen CD121a Antibody, D2S1473 Antibody, IL-1R-1 Antibody, IL-1R-alpha Antibody, IL-1RT-1 Antibody, IL-1RT1 Antibody, IL1R Antibody, IL1RA Antibody, IL1RT1 Antibody, Interleukin receptor 1 Antibody, Interleukin-1 receptor alpha Antibody, Interleukin-1 receptor type 1 Antibody, CD121A Antibody, CD121a antigen Antibody, Interleukin 1 receptor, type I Antibody, Interleukin-1 receptor type I Antibody, Interleukin-1 type i receptor Antibody, p80 Antibody
Family / Subfamily:	Interleukin
Host	IL1R1 antibody was produced in Rabbit
Clonality:	Polyclonal
Immunogen Species:	IL1RA / IL1R1 antibody was raised against Human
Antigen Type:	Synthetic peptide
Immunogen:	IL1RA / IL1R1 antibody was raised against kLH conjugated synthetic peptide selected from the C-terminal(E487) region of human IL1R.
Epitope:	C-Terminus
Reactivity:	Human
Purification:	Immunoaffinity purified
Presentation:	PBS, 0.09% sodium azide
Recommended Storage:	Maintain refrigerated at 2-8°C for up to 6 months. For long term storage store at -20°C.
Uses:	IHC - Paraffin (5 µg/ml), Western blot (1:1000) (Optimal dilution to be determined by the researcher)
Size:	50 µg

Immunohistochemistry Image:



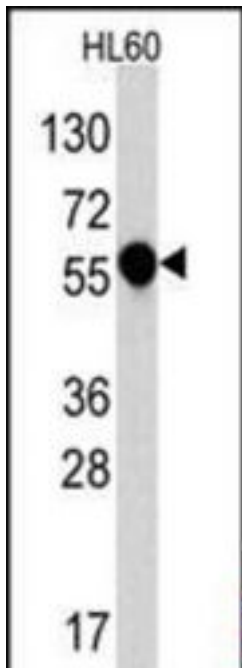
Human Lung, Macrophages: Formalin-Fixed, Paraffin-Embedded (FFPE)

Immunohistochemistry Image:



Formalin-fixed and paraffin-embedded human prostata carcinoma tissue reacted with IL1R antibody (C-term E487), which was peroxidase-conjugated to the secondary antibody, followed by DAB staining.

Western Blot Image:



Western blot of anti-IL1R LS-B9079 in HL60 cell line lysates (35 ug/lane). IL1R (arrow) was detected using the purified Pab (1:60 dilution).

Requested From:

Japan

Laboratory Reagent For In Vitro Research Use Only

Not for resale without prior written consent from LifeSpan BioSciences, Inc.

Created on 9/24/2014

© 2014 LifeSpan BioSciences