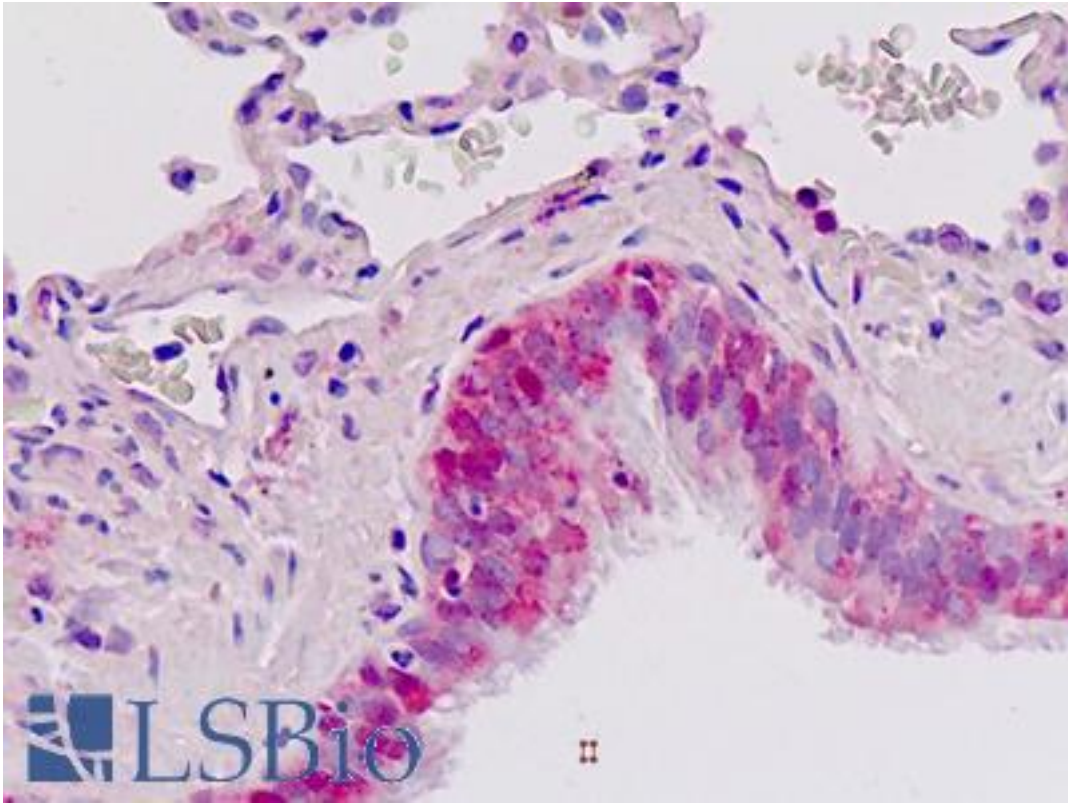


IGFBP2 / IGF-BP53 Rabbit anti-Human Polyclonal (aa287-317) Antibody - LS-B9078 - LSBio

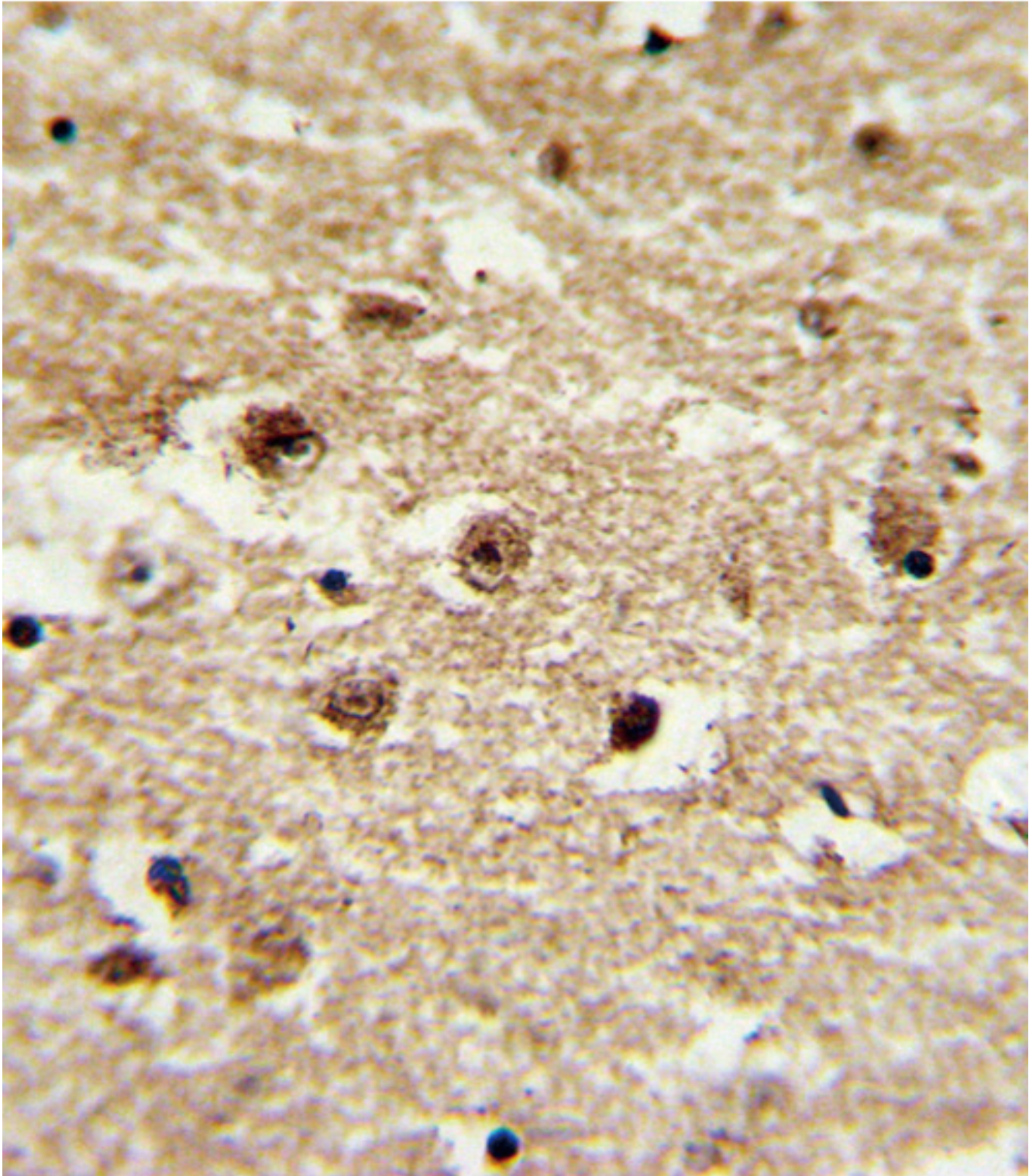
CatalogID:	LS-B9078
Validation:	This antibody replaces catalog number LS-C165148. It has been validated for use in the following assays: IHC-P.
Target:	insulin-like growth factor binding protein 2, 36kDa (IGFBP2)
Synonyms:	IGFBP2 Antibody, BP2 Antibody, IGFBP-2 Antibody, IGF-binding protein 2 Antibody, IBP-2 Antibody, IBP2 Antibody, IGF-BP53 Antibody
Host	IGFBP2 antibody was produced in Rabbit
Clonality:	Polyclonal
Immunogen Species:	IGFBP2 / IGF-BP53 antibody was raised against Human
Antigen Type:	Synthetic peptide
Immunogen:	IGFBP2 / IGF-BP53 antibody was raised against kLH-conjugated synthetic peptide from C-terminal region of human IGFBP2
Specificity:	Human IGFBP2
Epitope:	aa287-317
Reactivity:	Human
Purification:	Immunoaffinity purified
Presentation:	PBS, 0.09% sodium azide
Recommended Storage:	Maintain refrigerated at 2-8°C for up to 6 months. For long term storage store at -20°C.
Uses:	IHC - Paraffin (5 µg/ml), Immunofluorescence (1:10 - 1:50), Western blot (1:1000), Flow Cytometry (1:10 - 1:50) (Optimal dilution to be determined by the researcher)
Size:	200 µl

Immunohistochemistry Image:



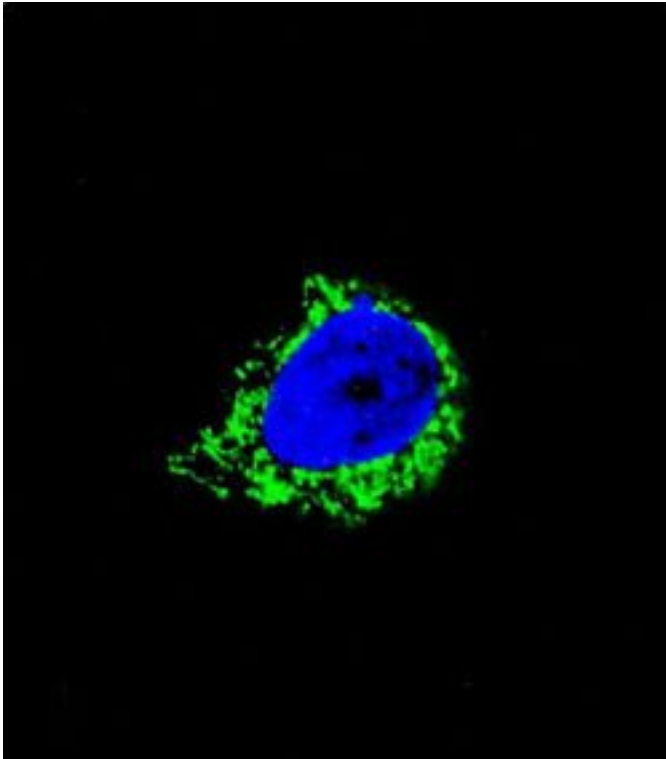
Human Lung, Respiratory Epithelium: Formalin-Fixed, Paraffin-Embedded (FFPE)

Immunohistochemistry Image:



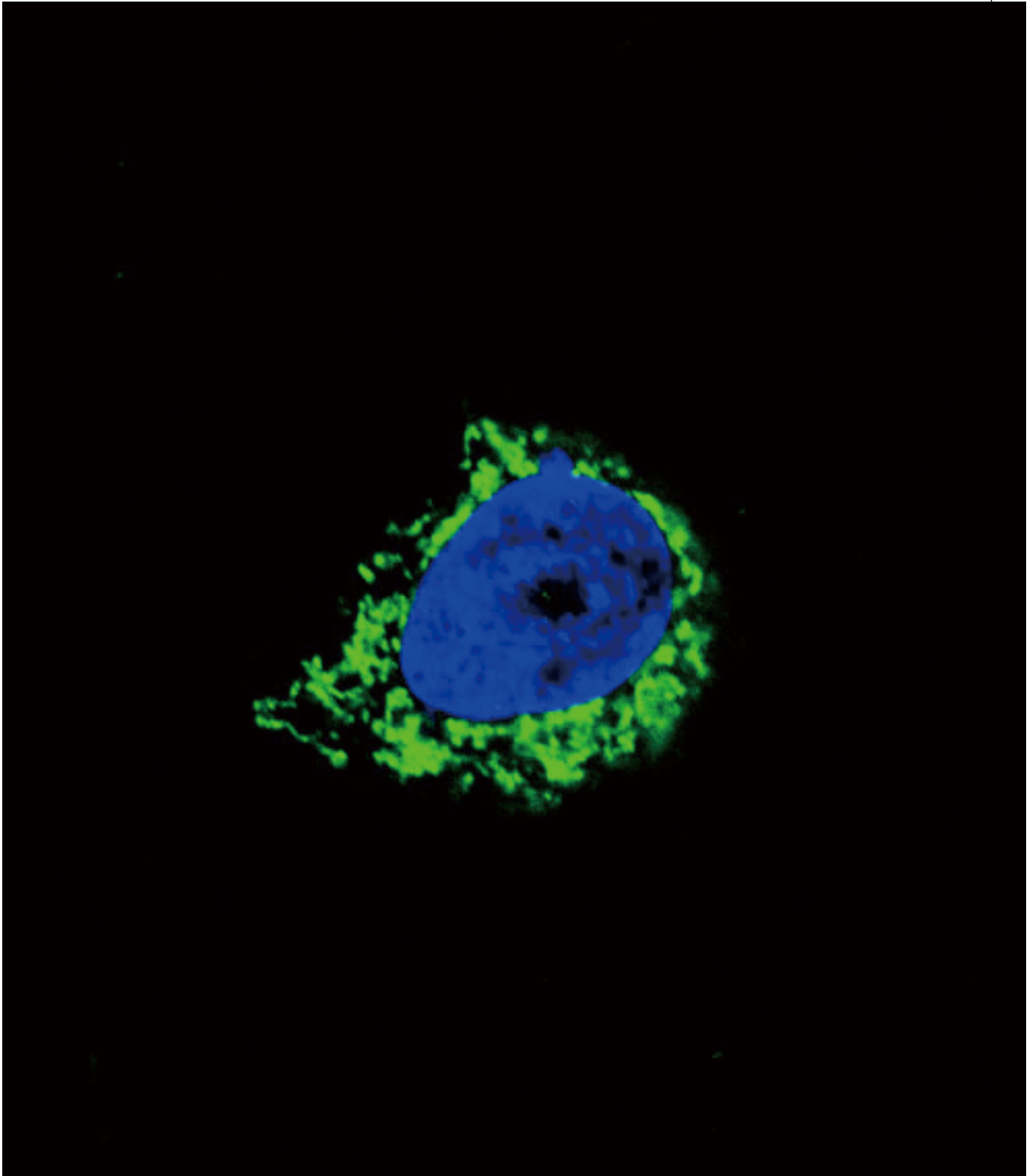
Formalin-fixed and paraffin-embedded human brain tissue with IGFBP2 Antibody (C-term), which was peroxidase-conjugated to the secondary antibody, followed by DAB staining.

Immunofluorescence Image:



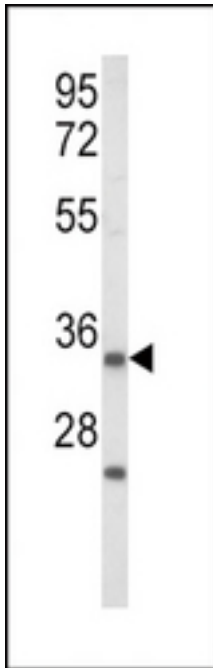
Confocal immunofluorescence of IGFBP2 Antibody (C-term) with A549 cell followed by Alexa Fluor 488-conjugated goat anti-rabbit IgG (green). DAPI was used to stain the cell nuclear (blue).

Flow Cytometry Image:



Flow cytometry of Jurkat cells using IGFBP2 Antibody (C-term)(bottom histogram) compared to a negative control cell (top histogram). FITC-conjugated goat-anti-rabbit secondary antibodies were used for the analysis.

Western Blot Image:



Western blot of IGFBP2 Antibody (C-term) in Jurkat cell line lysates (35 ug/lane).IGFBP2 (arrow) was detected using the purified Pab.(2 ug/ml)

Requested From:

Japan

Laboratory Reagent For In Vitro Research Use Only

Not for resale without prior written consent from LifeSpan BioSciences, Inc.

Created on 9/24/2014

© 2014 LifeSpan BioSciences