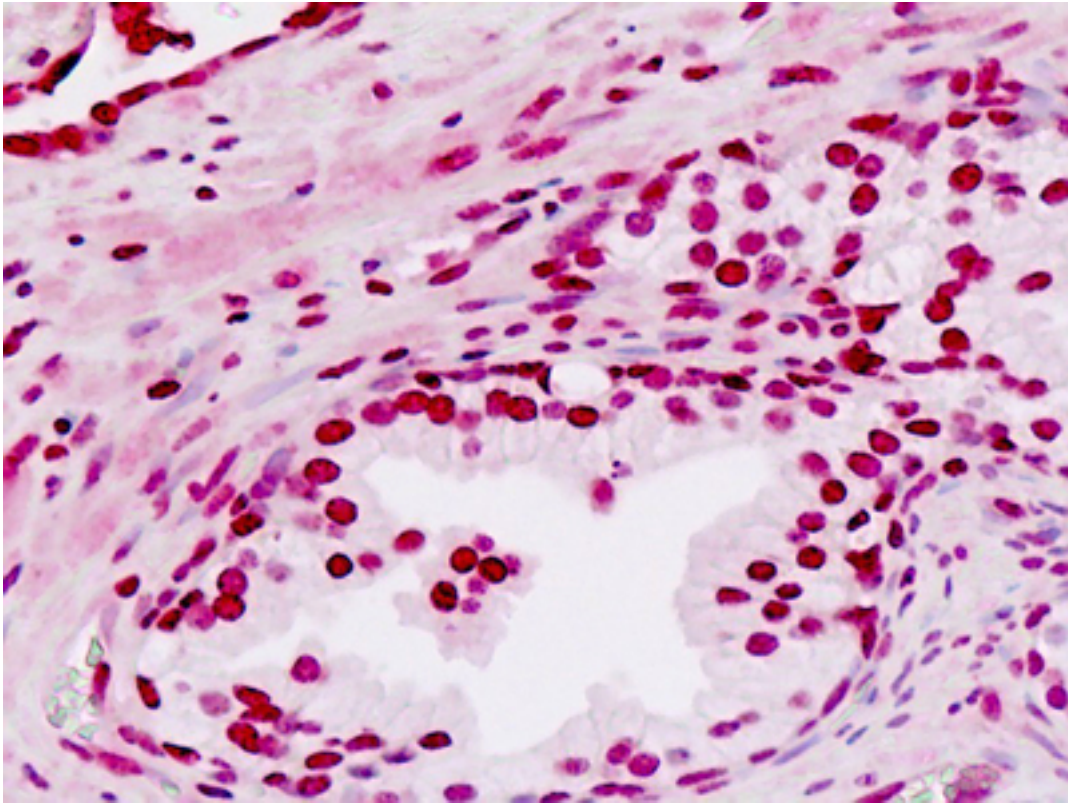


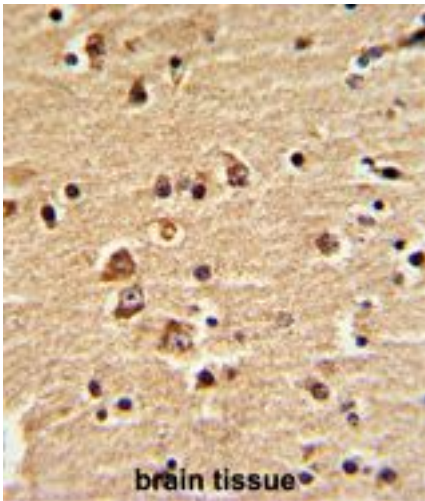
EN2 Rabbit anti-Human Polyclonal (C-Terminus) Antibody - LS-B9057 - LSBio	
CatalogID:	LS-B9057
Validation:	This antibody replaces catalog number LS-C100663. It has been validated for use in the following assays: IHC-P.
Target:	engrailed homeobox 2 (EN2)
Synonyms:	EN2 Antibody, AUTS10 Antibody, Engrailed homolog 2 Antibody, Engrailed homeobox 2 Antibody, Homeobox protein engrailed-2 Antibody, Engrailed-2 Antibody, Homeobox protein en-2 Antibody, Hu-En-2 Antibody
Host	EN2 antibody was produced in Rabbit
Clonality:	Polyclonal
Immunogen Species:	EN2 antibody was raised against Human
Antigen Type:	Synthetic peptide
Immunogen:	EN2 antibody was raised against kLH conjugated synthetic peptide selected from the C-terminal region of human EN2.
Epitope:	C-Terminus
Reactivity:	Human
Purification:	Immunoaffinity purified
Presentation:	PBS with 0.09% (w/v) sodium azide
Recommended Storage:	Maintain refrigerated at 2-8°C for up to 6 months. For long term storage store at -20°C.
Uses:	IHC - Paraffin (10 µg/ml), Western blot (1:1000), Flow Cytometry (1:10 - 1:50) (Optimal dilution to be determined by the researcher)
Size:	200 µl

Immunohistochemistry Image:



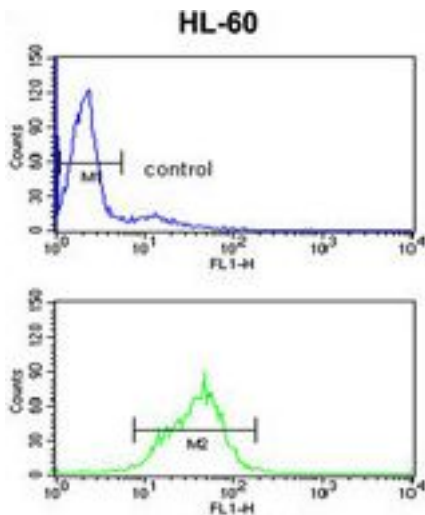
Human Prostate: Formalin-Fixed, Paraffin-Embedded (FFPE)

Immunohistochemistry Image:



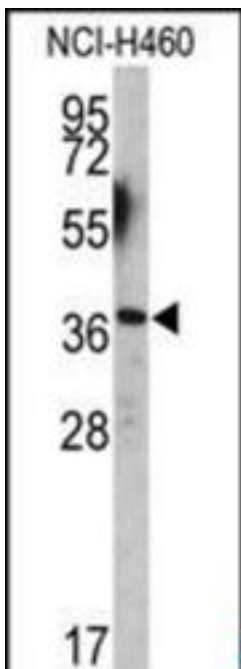
Formalin-fixed and paraffin-embedded human brain with EN2 Antibody (C-term-2), which was peroxidase-conjugated to the secondary antibody, followed by DAB staining.

Flow Cytometry Image:



EN2 Antibody (C-term-2) LS-B9057 flow cytometry analysis of HL-60 cells (bottom histogram) compared to a negative control cell (top histogram). FITC-conjugated goat-anti-rabbit secondary antibodies were used for the analysis.

Western Blot Image:



Western blot of EN2 antibody (C-term-2) LS-B9057 in NCI-H460 cell line lysates (35 ug/lane). EN2 (arrow) was detected using the purified Pab.

Requested From:

Japan

Laboratory Reagent For In Vitro Research Use Only

Not for resale without prior written consent from LifeSpan BioSciences, Inc.

Created on 9/24/2014

© 2014 LifeSpan BioSciences