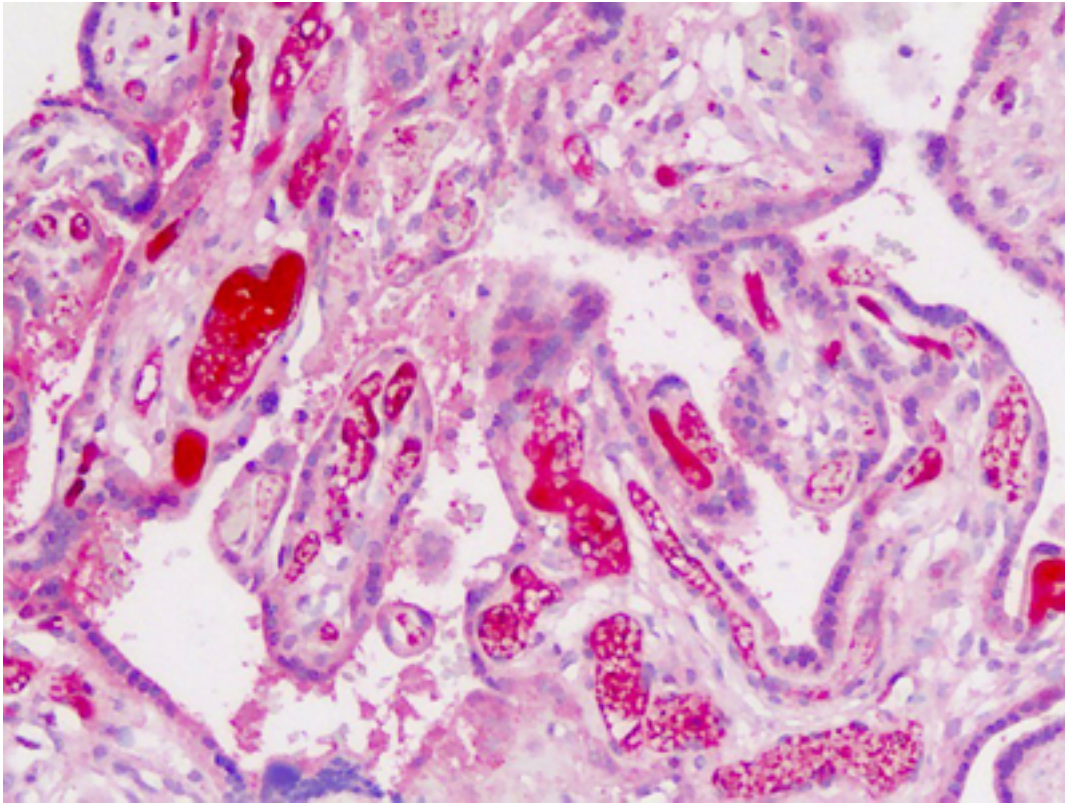


ADAMTS19 Rabbit anti-Human Polyclonal (Internal) Antibody - LS-B9056 - LSBio

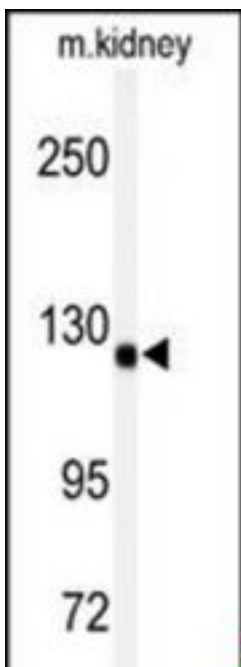
CatalogID:	LS-B9056
Validation:	This antibody replaces catalog number LS-C100651. It has been validated for use in the following assays: IHC-P.
Target:	ADAM metallopeptidase with thrombospondin type 1 motif, 19 (ADAMTS19)
Synonyms:	ADAMTS19 Antibody, ADAM-TS 19 Antibody, ADAMTS-19 Antibody, ADAM-TS19 Antibody
Family / Subfamily:	Protease / Metallopeptidase M12B
Host	ADAMTS19 antibody was produced in Rabbit
Clonality:	Polyclonal
Immunogen Species:	ADAMTS19 antibody was raised against Human
Antigen Type:	Synthetic peptide
Immunogen:	ADAMTS19 antibody was raised against kLH conjugated synthetic peptide selected from the center region of human ADAMTS19.
Epitope:	Internal
Reactivity:	Human, Mouse
Purification:	Immunoaffinity purified
Presentation:	PBS with 0.09% (w/v) sodium azide
Recommended Storage:	Maintain refrigerated at 2-8°C for up to 6 months. For long term storage store at -20°C.
Uses:	IHC - Paraffin (10 µg/ml), Western blot (1:1000) (Optimal dilution to be determined by the researcher)
Size:	200 µl

Immunohistochemistry Image:



Human Placenta: Formalin-Fixed, Paraffin-Embedded (FFPE)

Western Blot Image:



Western blot of anti-ADAMTS19 Antibody (Center) LS-B9056 in mouse kidney tissue lysates (35 ug/lane). ADAMTS19 (arrow) was detected using the purified Pab.

Requested From:

Japan

Laboratory Reagent For In Vitro Research Use Only

Not for resale without prior written consent from LifeSpan BioSciences, Inc.

Created on 9/24/2014

© 2014 LifeSpan BioSciences