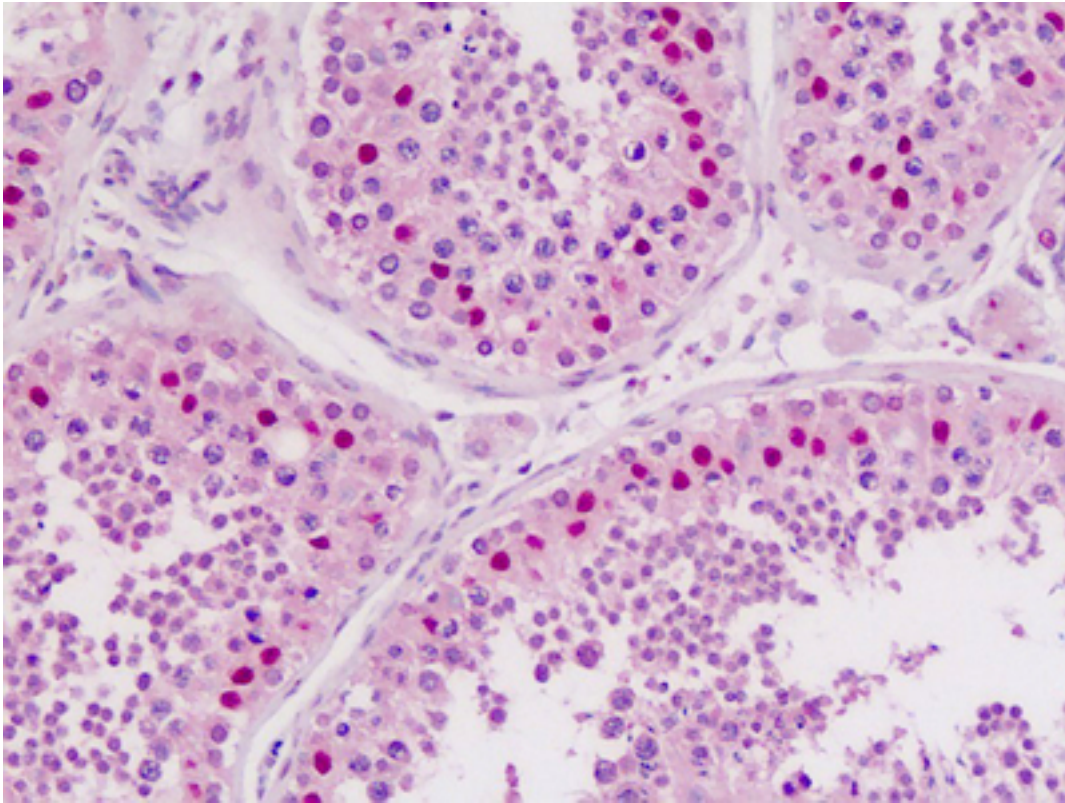


CDC25B Rabbit anti-Human Polyclonal (N-Terminus) Antibody - LS-B9050 - LSBio

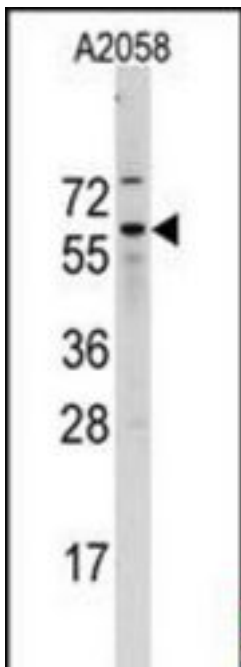
| | |
|-----------------------------|---|
| CatalogID: | LS-B9050 |
| Validation: | This antibody replaces catalog number LS-C100807. It has been validated for use in the following assays: IHC-P. |
| Target: | cell division cycle 25B (CDC25B) |
| Synonyms: | CDC25B Antibody, CDC25B phosphatase Antibody, Cell division cycle 25B Antibody, M-phase inducer phosphatase 2 Antibody, CDC25HU2 Antibody |
| Family / Subfamily: | Protein Phosphatase / CDC25 |
| Host | CDC25B antibody was produced in Rabbit |
| Clonality: | Polyclonal |
| Immunogen Species: | CDC25B antibody was raised against Human |
| Antigen Type: | Synthetic peptide |
| Immunogen: | CDC25B antibody was raised against kLH conjugated synthetic peptide selected from the N-terminal region of human Cdc25B. |
| Epitope: | N-Terminus |
| Reactivity: | Human |
| Purification: | Immunoaffinity purified |
| Presentation: | PBS with 0.09% (w/v) sodium azide |
| Recommended Storage: | Maintain refrigerated at 2-8°C for up to 6 months. For long term storage store at -20°C. |
| Uses: | IHC - Paraffin (10 µg/ml), Western blot (1:1000) (Optimal dilution to be determined by the researcher) |
| Size: | 200 µl |

Immunohistochemistry Image:



Human Testis: Formalin-Fixed, Paraffin-Embedded (FFPE)

Western Blot Image:



Western blot of Cdc25B Antibody (N-term) (A166) LS-B9050 in A2058 cell line lysates (35 ug/lane). Cdc25B (arrow) was detected using the purified Pab (1:60 dilution).

Requested From:

Japan

Laboratory Reagent For In Vitro Research Use Only

Not for resale without prior written consent from LifeSpan BioSciences, Inc.

Created on 9/24/2014

© 2014 LifeSpan BioSciences