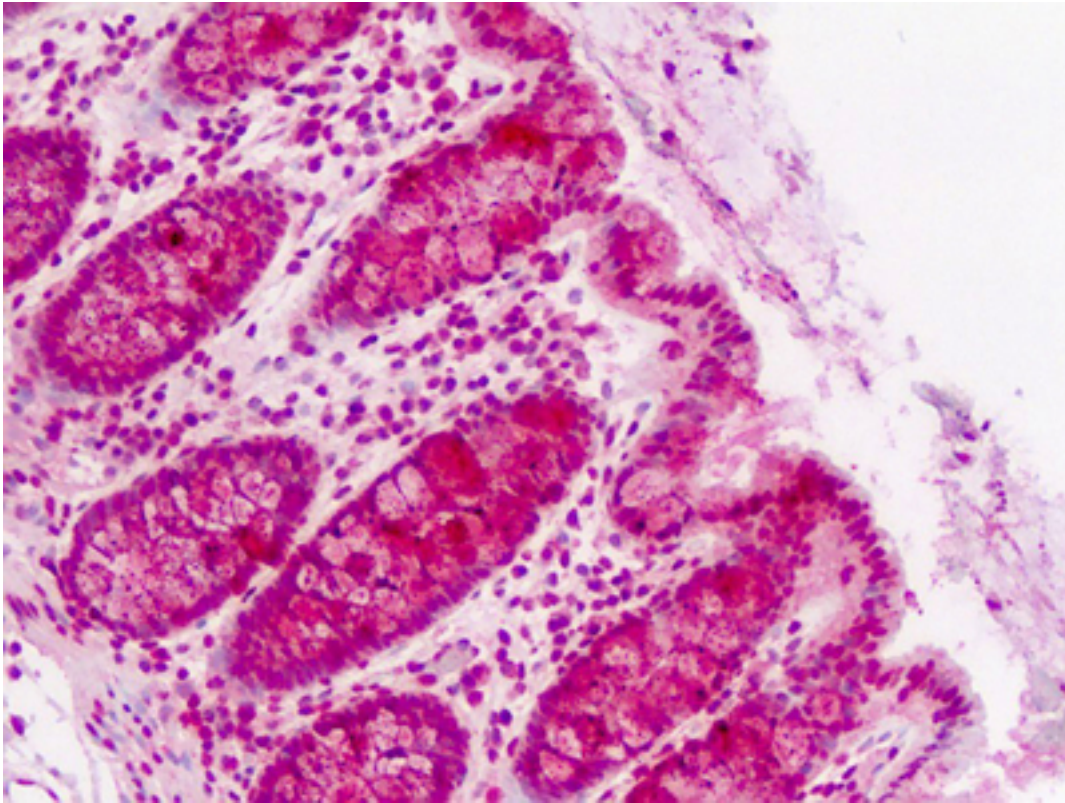


CLASP2 Rabbit anti-Human Polyclonal (C-Terminus) Antibody - LS-B9048 - LSBio

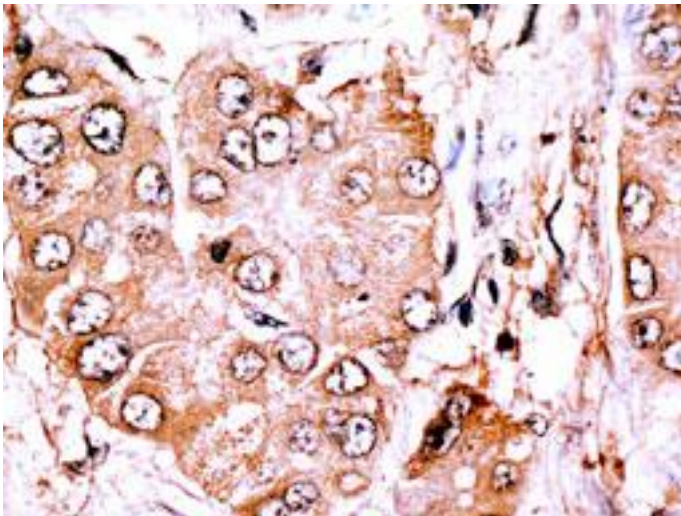
CatalogID:	LS-B9048
Validation:	This antibody replaces catalog number LS-C99066. It has been validated for use in the following assays: IHC-P.
Target:	cytoplasmic linker associated protein 2 (CLASP2)
Synonyms:	CLASP2 Antibody, CLIP-associating protein 2 Antibody, Protein Orbit homolog 2 Antibody, HOrbit2 Antibody, KIAA0627 Antibody
Host	CLASP2 antibody was produced in Rabbit
Clonality:	Polyclonal
Immunogen Species:	CLASP2 antibody was raised against Human
Antigen Type:	Synthetic peptide
Immunogen:	CLASP2 antibody was raised against kLH conjugated synthetic peptide selected from the C-terminal region of human CLASP2.
Epitope:	C-Terminus
Reactivity:	Human
Purification:	Immunoaffinity purified
Presentation:	PBS with 0.09% (w/v) sodium azide
Recommended Storage:	Maintain refrigerated at 2-8°C for up to 6 months. For long term storage store at -20°C.
Uses:	IHC - Paraffin (5 µg/ml), Western blot (1:1000) (Optimal dilution to be determined by the researcher)
Size:	200 µl

Immunohistochemistry Image:



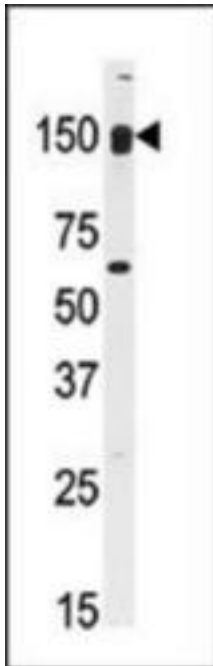
Human Colon: Formalin-Fixed, Paraffin-Embedded (FFPE)

Immunohistochemistry Image:



Formalin-fixed and paraffin-embedded human Hepatocellular carcinoma reacted with anti-CLASP2 Antibody (C-term), which was peroxidase-conjugated to the secondary antibody, followed by DAB staining.

Western Blot Image:



Western blot of anti-CLASP2 Antibody (C-term) LS-B9048 in mouse kidney tissue lysates (35 ug/lane). CLASP2 (arrow) was detected using the purified Pab (1:300 dilution).

Requested From:

Japan

Laboratory Reagent For In Vitro Research Use Only

Not for resale without prior written consent from LifeSpan BioSciences, Inc.

Created on 9/24/2014

© 2014 LifeSpan BioSciences