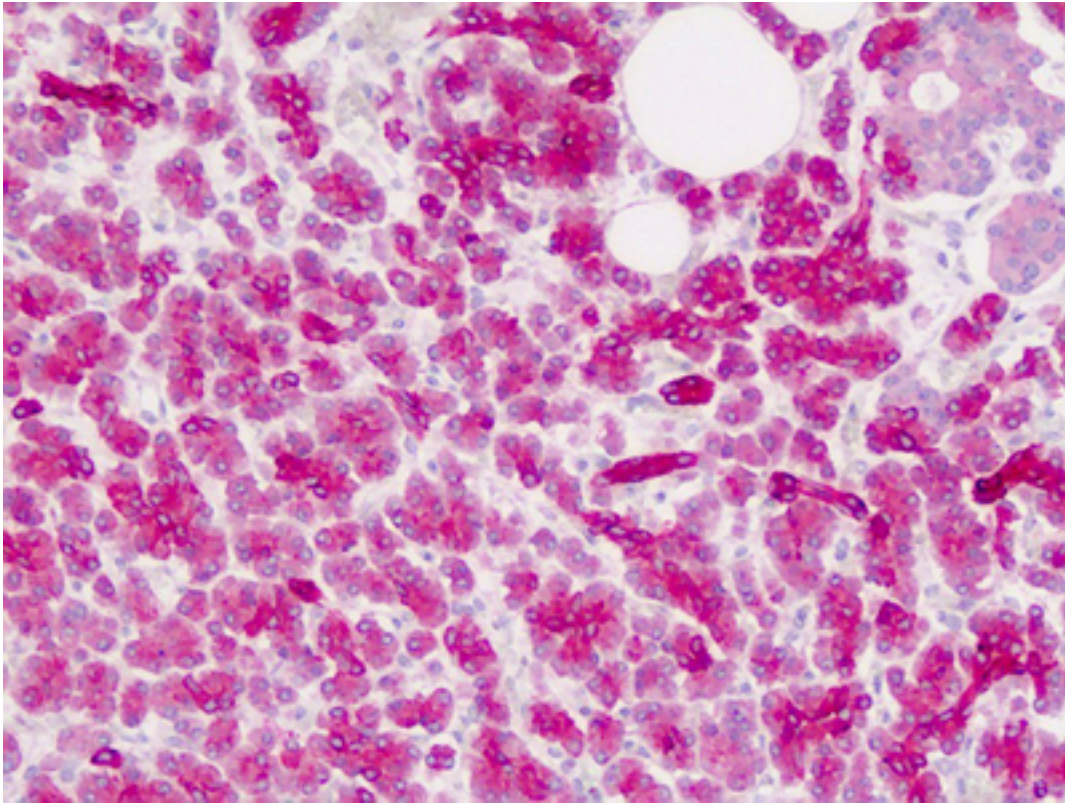


ZIC4 Rabbit anti-Human Polyclonal (C-Terminus) Antibody - LS-B9034 - LSBio

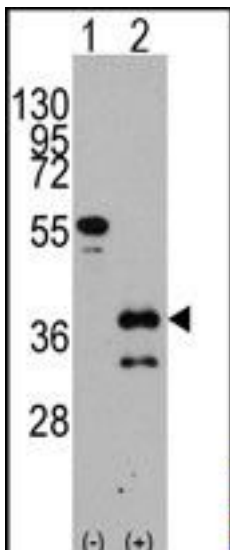
CatalogID:	LS-B9034
Validation:	This antibody replaces catalog number LS-C98584. It has been validated for use in the following assays: IHC-P.
Target:	Zic family member 4 (ZIC4)
Synonyms:	ZIC4 Antibody, Zic family member 4 Antibody, Zinc finger protein ZIC 4 Antibody
Host	ZIC4 antibody was produced in Rabbit
Clonality:	Polyclonal
Immunogen Species:	ZIC4 antibody was raised against Human
Antigen Type:	Synthetic peptide
Immunogen:	ZIC4 antibody was raised against kLH conjugated synthetic peptide selected from the C-term region of human ZIC4.
Epitope:	C-Terminus
Reactivity:	Human
Purification:	Immunoaffinity purified
Presentation:	PBS with 0.09% (w/v) sodium azide
Recommended Storage:	Maintain refrigerated at 2-8°C for up to 6 months. For long term storage store at -20°C.
Uses:	IHC - Paraffin (10 µg/ml), Western blot (1:1000) (Optimal dilution to be determined by the researcher)
Size:	200 µl

Immunohistochemistry Image:



Human Pancreas: Formalin-Fixed, Paraffin-Embedded (FFPE)

Western Blot Image:



Western blot analysis of ZIC4 (arrow) using rabbit polyclonal ZIC4 Antibody (C-term). 293 cell lysates (2 ug/lane) either nontransfected (Lane 1) or transiently transfected with the ZIC4 gene (Lane 2) (Origene Technologies).

Requested From:

Japan

Laboratory Reagent For In Vitro Research Use Only

Not for resale without prior written consent from LifeSpan BioSciences, Inc.

Created on 9/24/2014

© 2014 LifeSpan BioSciences