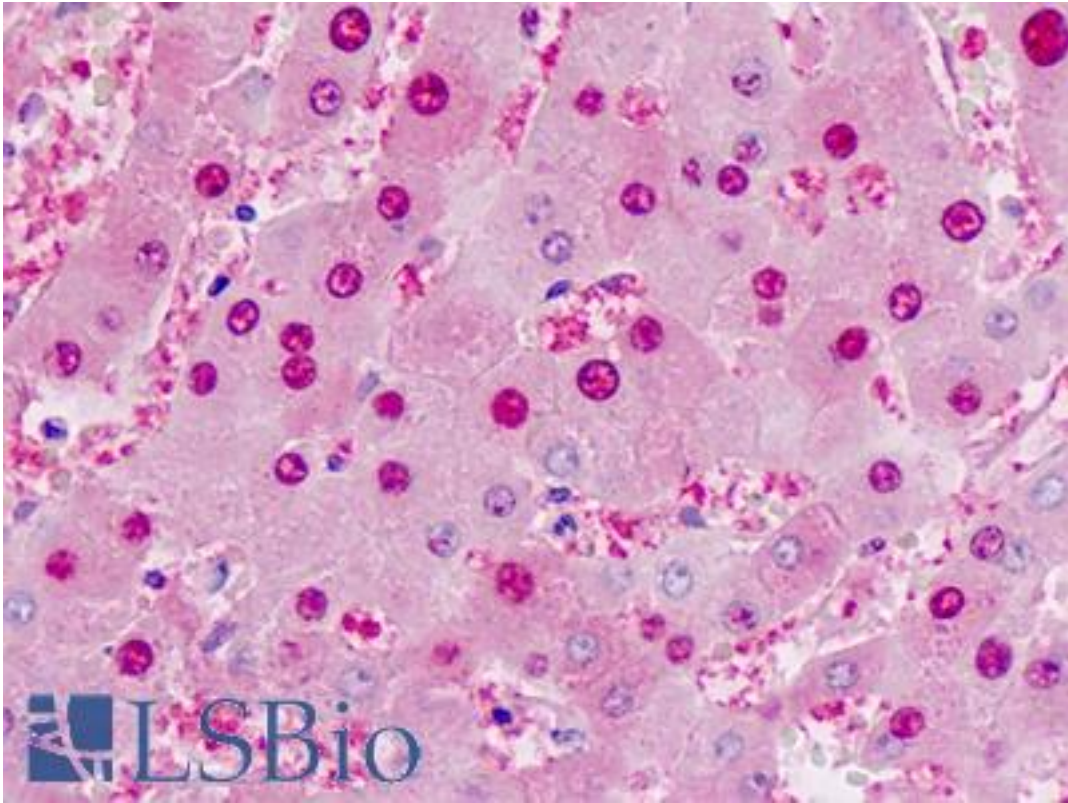


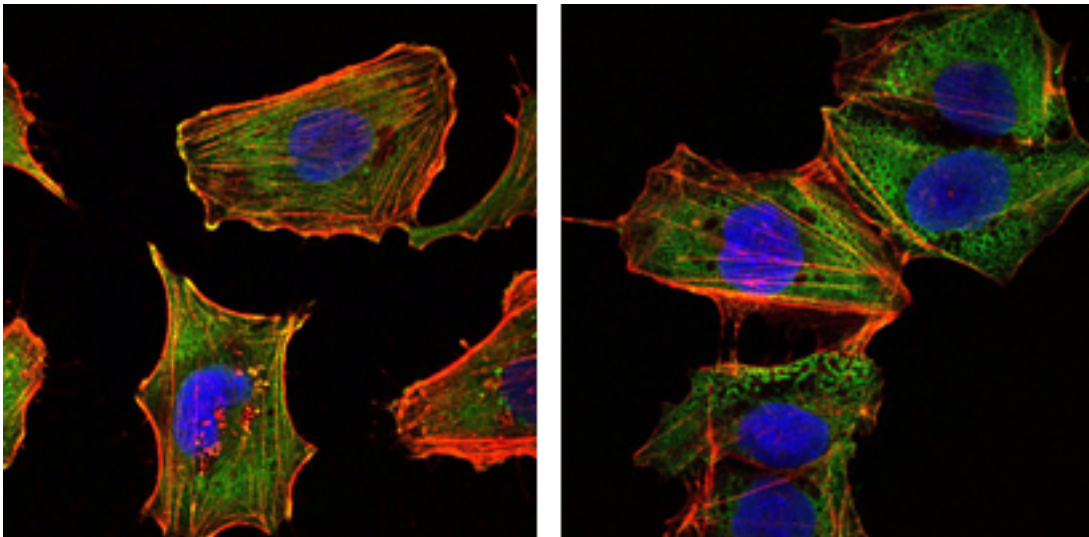
CRTC1 / MECT1 / TORC1 Mouse anti-Human Monoclonal (1B5) Antibody - LS-B9025 - LSBio	
CatalogID:	LS-B9025
Validation:	This antibody replaces catalog number LS-C169226. It has been validated for use in the following assays: IHC-P.
Target:	CREB regulated transcription coactivator 1 (CRTC1)
Synonyms:	CRTC1 Antibody, KIAA0616 Antibody, MECT1 Antibody, TORC-1 Antibody, TORC1 Antibody, Transducer of CREB protein 1 Antibody, WAMTP1 Antibody
Host	CRTC1 antibody was produced in Mouse
Clonality:	Monoclonal
Isotype:	IgG1
Clone Name:	1B5
Immunogen Species:	CRTC1 / MECT1 / TORC1 antibody was raised against Human
Antigen Type:	Recombinant protein
Immunogen:	CRTC1 / MECT1 / TORC1 antibody was raised against purified recombinant fragment of human CRTC1 expressed in E. coli.
Specificity:	Human TORC1 / CRTC1
Reactivity:	Human
Purification:	Ascites
Presentation:	Ascites, 0.03% sodium azide
Recommended Storage:	Long term: -20°C; Short term: +4°C; Avoid freeze-thaw cycles.
Uses:	IHC (1:50), ICC (1:200 - 1:1000), Immunofluorescence (1:1000), Western blot (1:500 - 1:2000), Flow Cytometry (1:200 - 1:400), ELISA (1:10000) (Optimal dilution to be determined by the researcher)
Size:	50 µl

Immunohistochemistry Image:



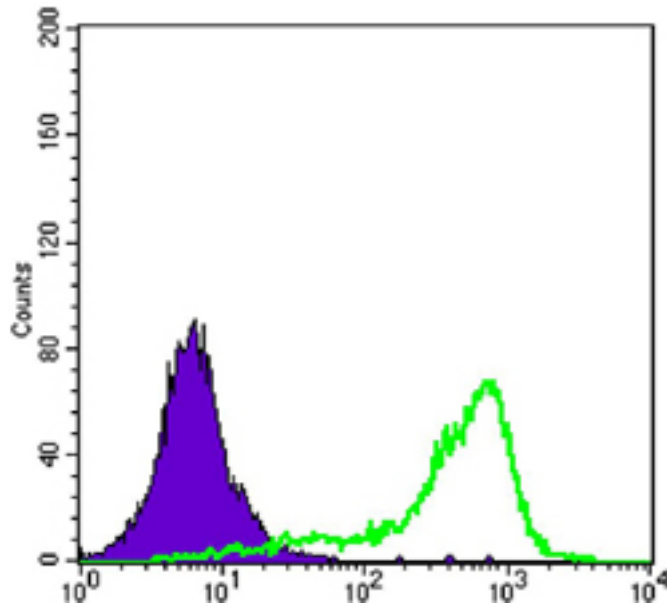
Human Liver, Hepatocytes: Formalin-Fixed, Paraffin-Embedded (FFPE)

Immunofluorescence Image:



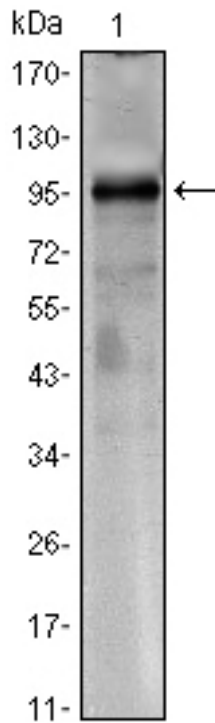
Immunofluorescence of U251 (left) and NTERA2 (right) cells using CRTC1 mAb (green). Red: Actin filaments have been labeled with DY-554 phalloidin. Blue: DRAQ5 fluorescent DNA dye.

Flow Cytometry Image:



Flow cytometry of K562 cells using CRTC1 mouse mAb (green) and negative control (purple).

Western Blot Image:



Western blot of CRTC1 mouse mAb against CRTC1(AA: 1-353)-hIgGFc transfected HEK293 cell lysate.

Requested From:

Japan

Laboratory Reagent For In Vitro Research Use Only

Not for resale without prior written consent from LifeSpan BioSciences, Inc.

Created on 9/24/2014

© 2014 LifeSpan BioSciences