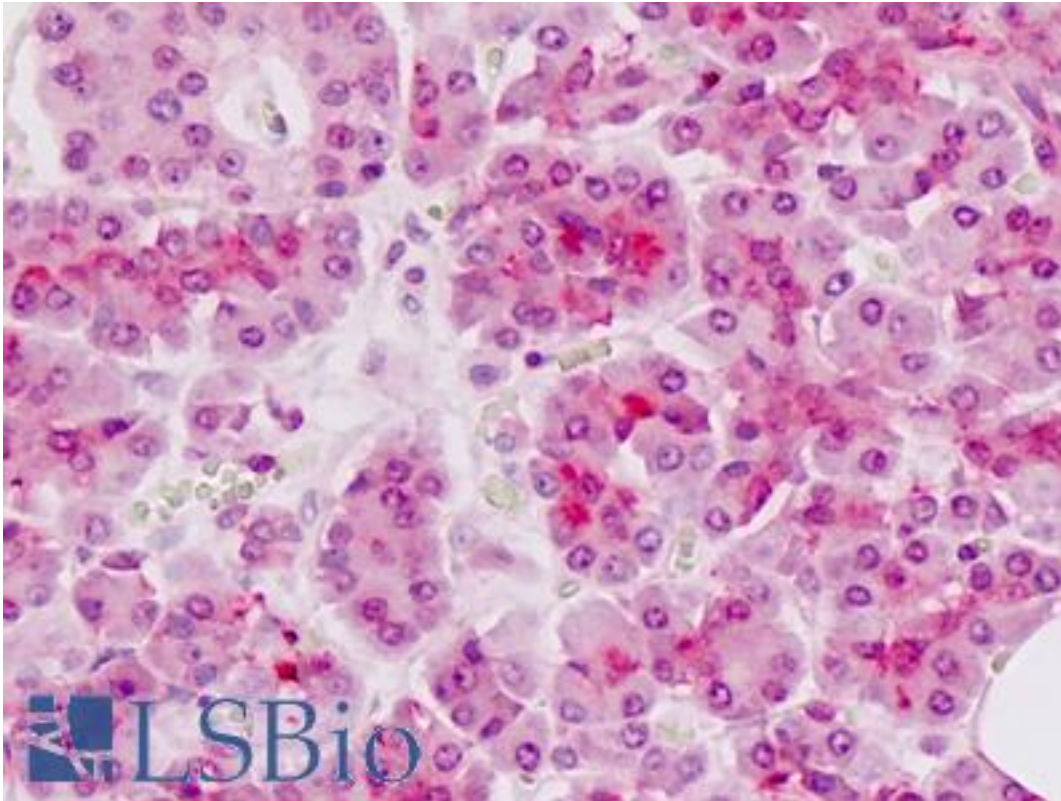


**UBXD9 / ASPL Rabbit anti-Human Polyclonal (aa398-427) Antibody - LS-B9022 - LSBio**

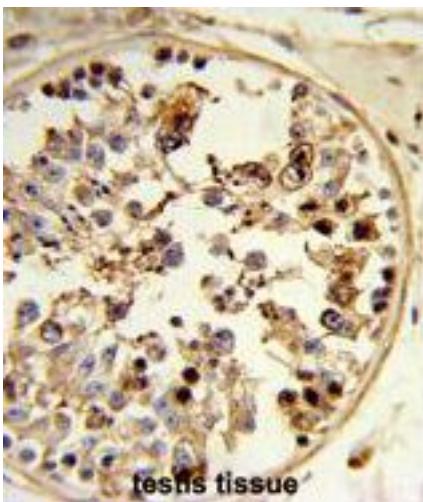
<b>CatalogID:</b>	LS-B9022
<b>Validation:</b>	This antibody replaces catalog number LS-C156551. It has been validated for use in the following assays: IHC-P.
<b>Target:</b>	alveolar soft part sarcoma chromosome region, candidate 1 (ASPSCR1)
<b>Synonyms:</b>	ASPSCR1 Antibody, ASPL Antibody, ASPCR1 Antibody, RCC17 Antibody, ASPS Antibody, UBX domain protein 9 Antibody, UBXD9 Antibody, UBXN9 Antibody, TUG Antibody
<b>Host</b>	ASPSCR1 antibody was produced in Rabbit
<b>Clonality:</b>	Polyclonal
<b>Immunogen Species:</b>	UBXD9 / ASPL antibody was raised against Human
<b>Antigen Type:</b>	Synthetic peptide
<b>Immunogen:</b>	UBXD9 / ASPL antibody was raised against kLH-conjugated synthetic peptide from C-terminal region of human ASPSCR1.
<b>Specificity:</b>	Human UBXD9 / ASPL
<b>Epitope:</b>	aa398-427
<b>Reactivity:</b>	Human
<b>Purification:</b>	Immunoaffinity purified
<b>Presentation:</b>	PBS, 0.09% sodium azide
<b>Recommended Storage:</b>	Maintain refrigerated at 2-8°C for up to 6 months. For long term storage store at -20°C.
<b>Uses:</b>	IHC - Paraffin (5 µg/ml), Western blot (1:1000), Flow Cytometry (1:10 - 1:50) (Optimal dilution to be determined by the researcher)
<b>Size:</b>	200 µl

**Immunohistochemistry Image:**



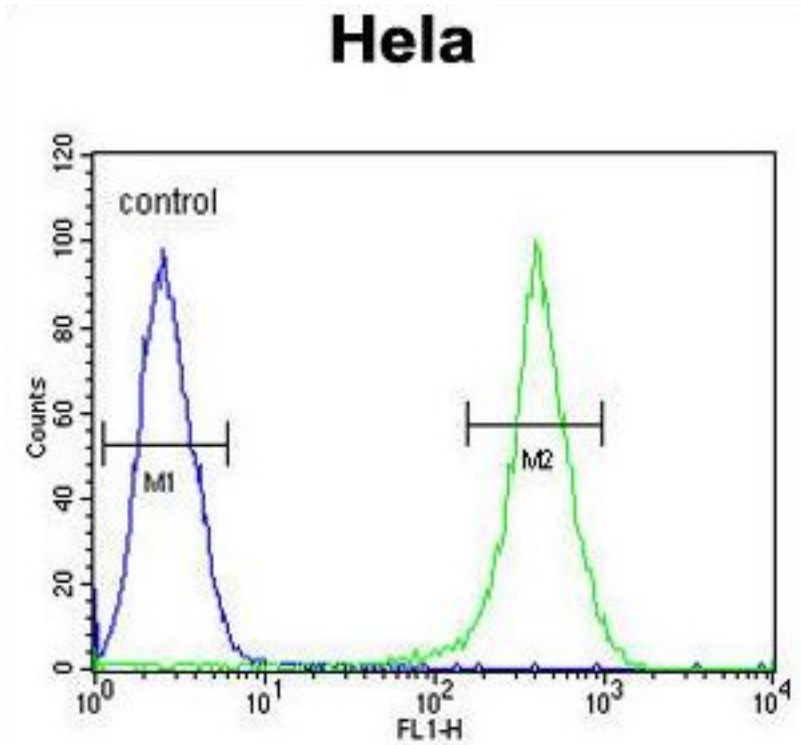
Human, Pancreas: Formalin-Fixed Paraffin-Embedded (FFPE)

**Immunohistochemistry Image:**



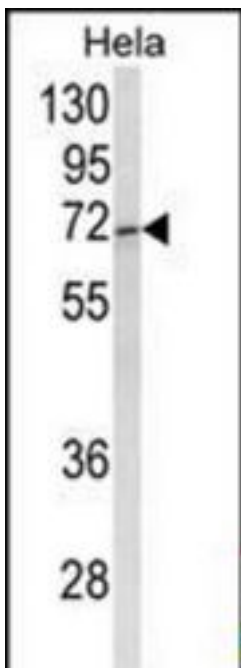
Formalin-fixed and paraffin-embedded human testis tissue reacted with ASPSCR1 Antibody (C-term), which was peroxidase-conjugated to the secondary antibody, followed by DAB staining.

Flow Cytometry Image:



ASPSCR1 Antibody (C-term) flow cytometry of HeLa cells (right histogram) compared to a negative control cell (left histogram). FITC-conjugated goat-anti-rabbit secondary antibodies were used for the analysis.

Western Blot Image:



Western blot of ASPSCR1 Antibody (C-term) in HeLa cell line lysates (35 ug/lane). ASPSCR1 (arrow) was detected using the purified Pab.

<b>Requested From:</b>	Japan
Laboratory Reagent For In Vitro Research Use Only	
Not for resale without prior written consent from LifeSpan BioSciences, Inc.	
Created on 9/24/2014	
© 2014 LifeSpan BioSciences	