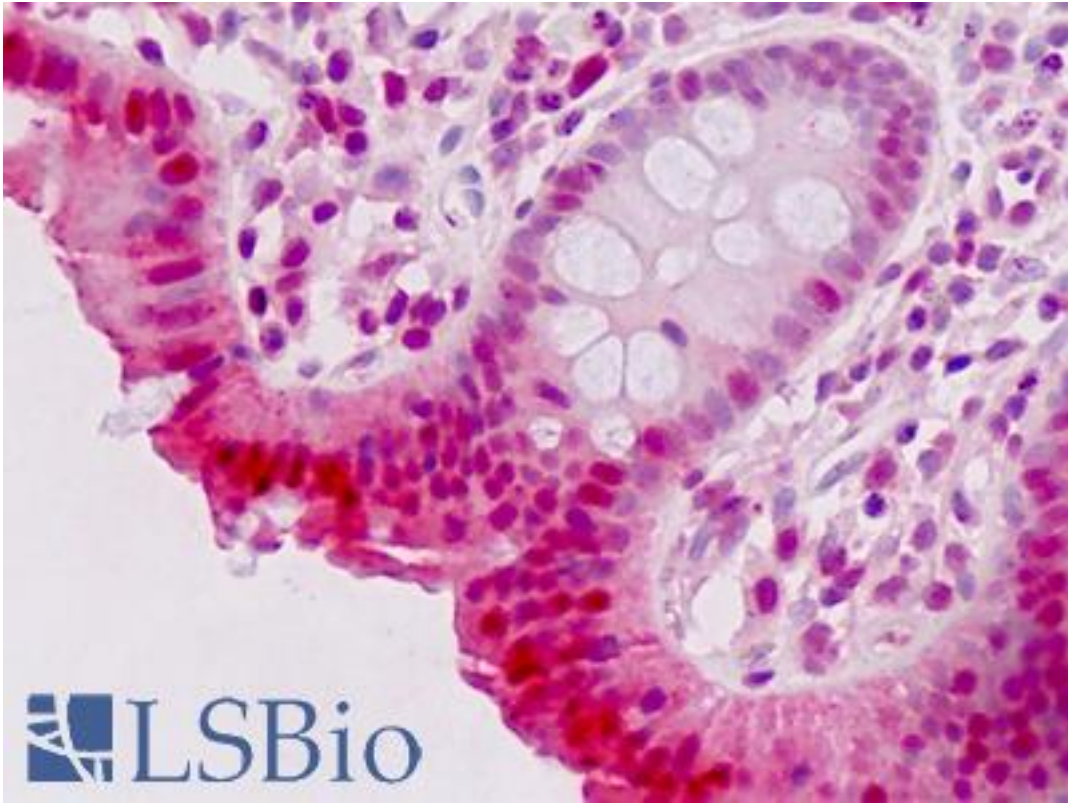


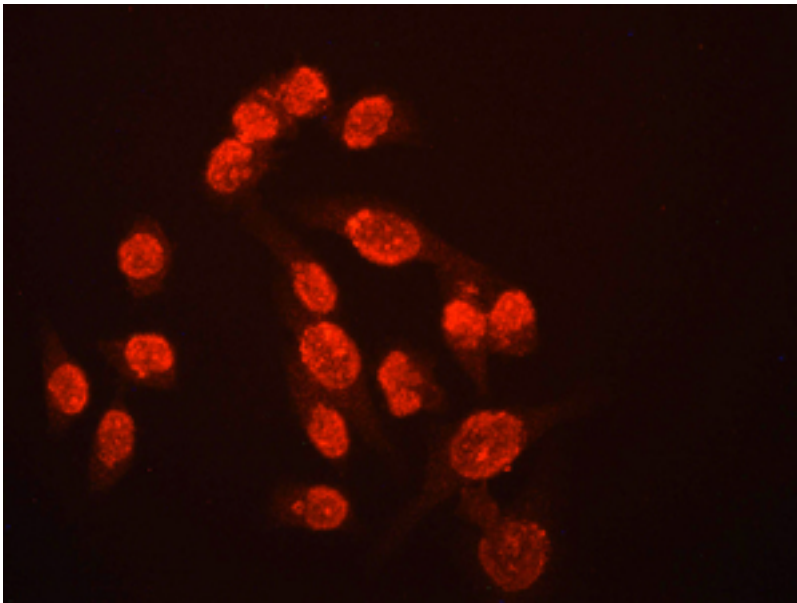
AP-1 / JUND Rabbit anti-Human Monoclonal (Internal) (EPR6520) Antibody - LS-B9020 - LSBio	
CatalogID:	LS-B9020
Validation:	This antibody replaces catalog number LS-C138818. It has been validated for use in the following assays: IHC-P.
Target:	jun D proto-oncogene (JUND)
Synonyms:	JUND Antibody, Activator protein 1 Antibody, AP-1 Antibody, JunD-FL isoform Antibody, Jun D proto-oncogene Antibody, Transcription factor jun-D Antibody
Host	JUND antibody was produced in Rabbit
Clonality:	Monoclonal
Clone Name:	EPR6520
Immunogen Species:	AP-1 / JUND antibody was raised against Human
Antigen Type:	Synthetic peptide
Immunogen:	AP-1 / JUND antibody was raised against a synthetic peptide corresponding to residues in human JunD was used as an immunogen.
Specificity:	Human JUND.
Epitope:	Internal
Reactivity:	Human
Purification:	Tissue culture supernatant
Presentation:	Tris-Glycine-NaCl or PBS, pH 7.2-7.4, 40-50% Glycerol, 0.01% sodium azide, 0.05% BSA
Recommended Storage:	Short term 4°C, long term aliquot and store at -20°C, avoid freeze thaw cycles.
Uses:	IHC - Paraffin (1:50), ICC (1:100 - 1:250), Immunofluorescence (1:250), Western blot (1:10000 - 1:50000), Immunoprecipitation (1:10 - 1:100) (Optimal dilution to be determined by the researcher)
Size:	50 µl
Concentration:	1.54 mg/ml

Immunohistochemistry Image:



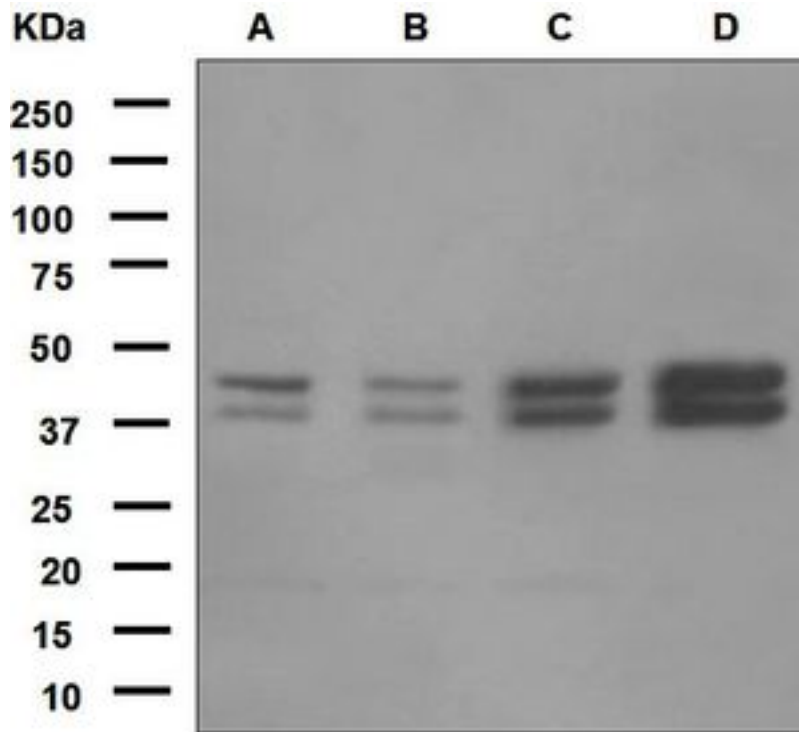
Human Colon, Epithelium: Formalin-Fixed, Paraffin-Embedded (FFPE)

Immunofluorescence Image:



Immunofluorescent staining of HeLa cells using anti-JunD antibody.

Western Blot Image:



Western blot analysis on (A) 293T, (B) Jurkat, (C) HepG2, and (D) HeLa cell lysates using anti-JunD antibody.

Requested From:

Japan

Laboratory Reagent For In Vitro Research Use Only

Not for resale without prior written consent from LifeSpan BioSciences, Inc.

Created on 9/24/2014

© 2014 LifeSpan BioSciences