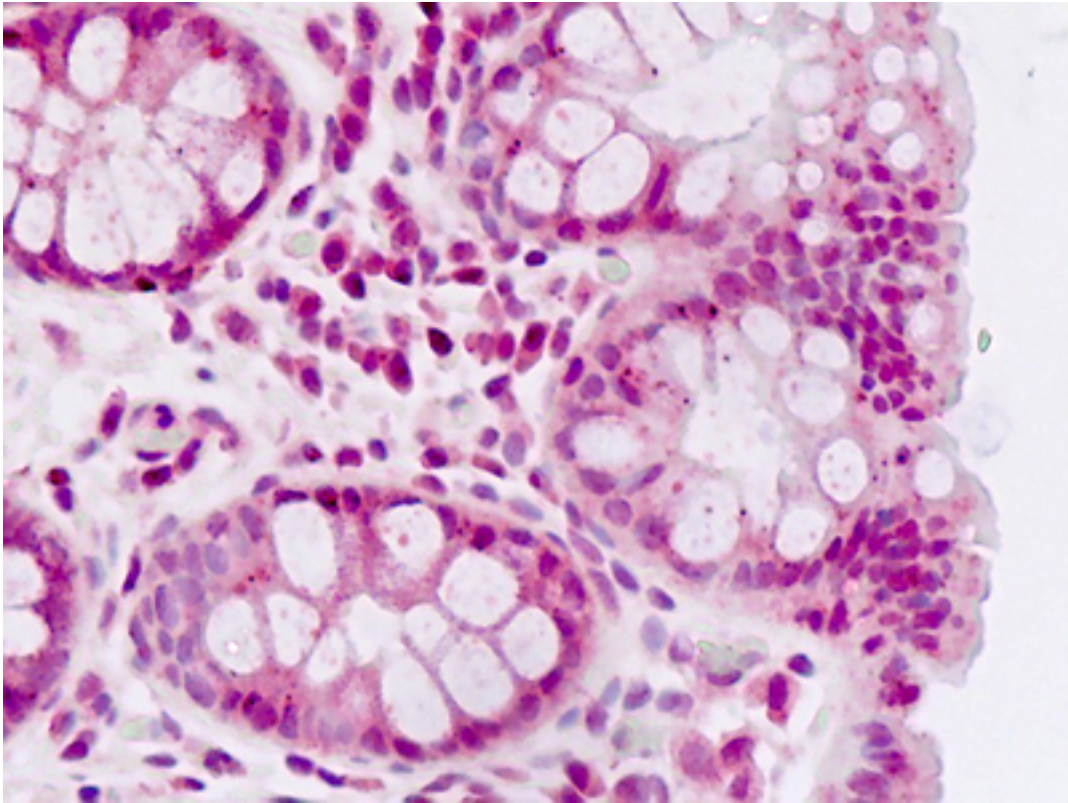


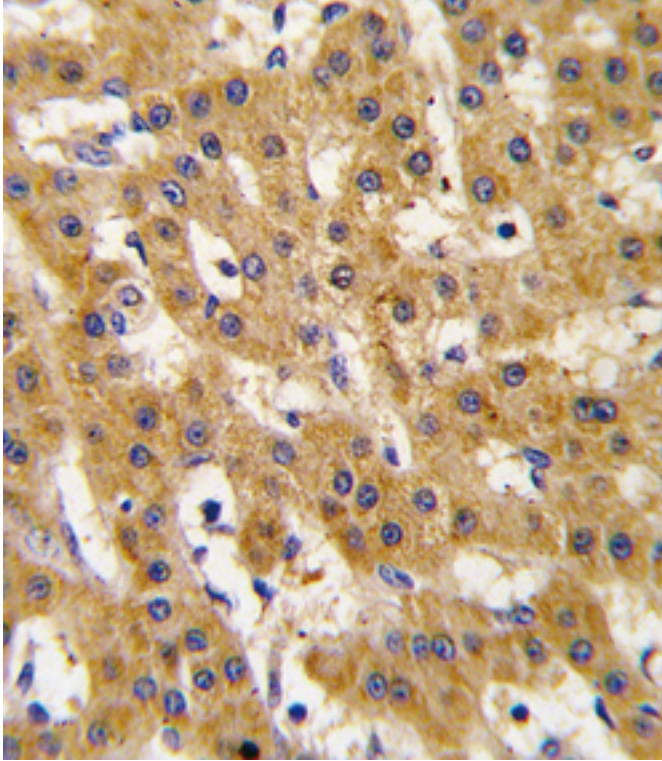
PDHX / Protein X / ProX Rabbit anti-Human Polyclonal (Thr11) Antibody - LS-B9012 - LSBio	
<b>CatalogID:</b>	LS-B9012
<b>Validation:</b>	This antibody replaces catalog number LS-C97696. It has been validated for use in the following assays: IHC-P.
<b>Target:</b>	pyruvate dehydrogenase complex, component X (PDHX)
<b>Synonyms:</b>	PDHX Antibody, DLDBP Antibody, E3BP Antibody, OPDX Antibody, ProX Antibody, Protein x Antibody, E3-binding protein Antibody
<b>Host</b>	PDHX antibody was produced in Rabbit
<b>Clonality:</b>	Polyclonal
<b>Immunogen Species:</b>	PDHX / Protein X / ProX antibody was raised against Human
<b>Antigen Type:</b>	Synthetic peptide
<b>Immunogen:</b>	PDHX / Protein X / ProX antibody was raised against kLH conjugated synthetic peptide corresponding to amino acid residues surrounding T11 of human PDX1.
<b>Epitope:</b>	Thr11
<b>Reactivity:</b>	Human
<b>Purification:</b>	Immunoaffinity purified
<b>Presentation:</b>	PBS with 0.09% (w/v) sodium azide
<b>Recommended Storage:</b>	Maintain refrigerated at 2-8°C for up to 6 months. For long term storage store at -20°C.
<b>Uses:</b>	IHC - Paraffin (10 µg/ml), Immunofluorescence (1:100), Western blot (1:1000) (Optimal dilution to be determined by the researcher)
<b>Size:</b>	50 µg

**Immunohistochemistry Image:**



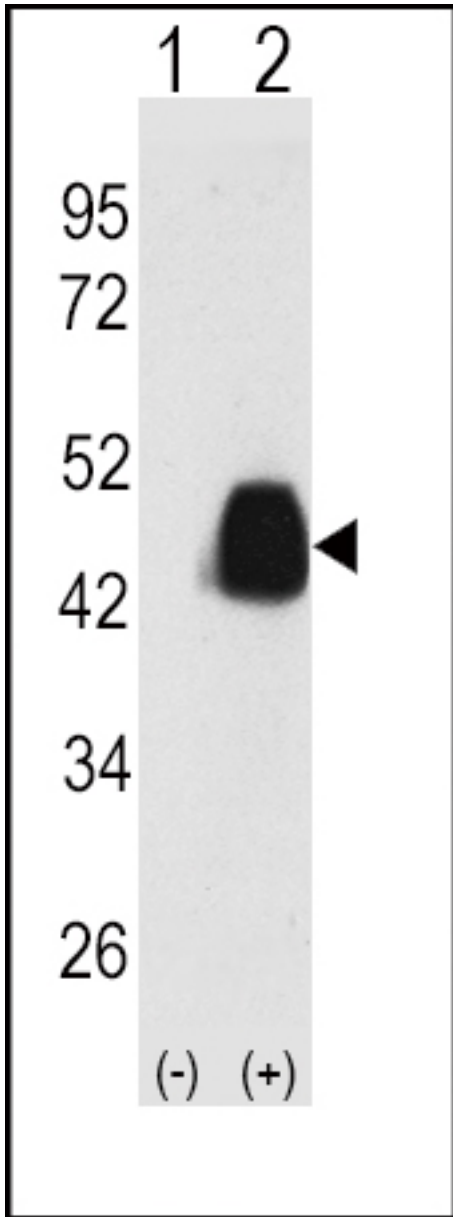
Human Colon: Formalin-Fixed, Paraffin-Embedded (FFPE)

**Immunohistochemistry Image:**



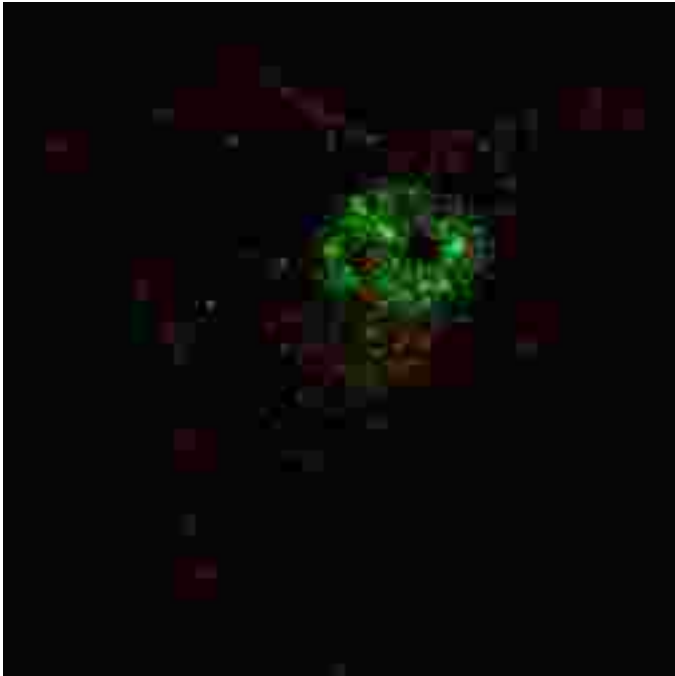
Formalin-fixed and paraffin-embedded human hepatocarcinoma tissue reacted with Phospho-PDX1-T11.control antibody, which was peroxidase-conjugated to the secondary antibody, followed by DAB staining. This data demonstrates the use of this antibody for immunohistochemistry; clinical relevance has not been evaluated.

**Western Blot Image:**



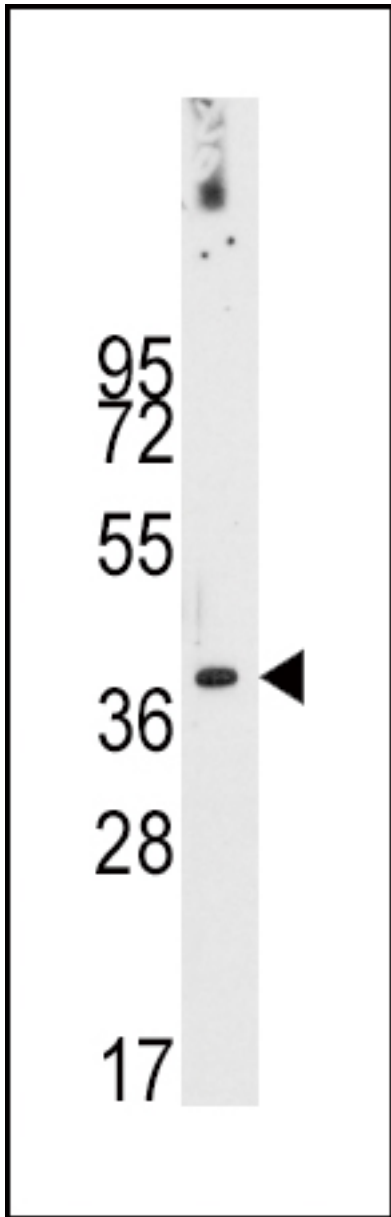
Formalin-fixed and paraffin-embedded human hepatocarcinoma tissue reacted with Phospho-PDX1-T11. control antibody, which was peroxidase-conjugated to the secondary antibody, followed by DAB staining.

**Western Blot Image:**



Western blot of anti-PDX1 Antibody (T11) LS-B9012 in NCI-H460 cell line lysates (35 ug/lane). PDX1-T11 (arrow) was detected using the purified Pab.

**Western Blot Image:**



Western blot of PDX1 (arrow) using PDX1 Antibody (T11) LS-B9012. 293 cell lysates (2 ug/lane) either nontransfected (Lane 1) or transiently transfected with the PDX1 gene (Lane 2).

**Requested From:**

Japan

Laboratory Reagent For In Vitro Research Use Only

Not for resale without prior written consent from LifeSpan BioSciences, Inc.

Created on 9/24/2014

© 2014 LifeSpan BioSciences