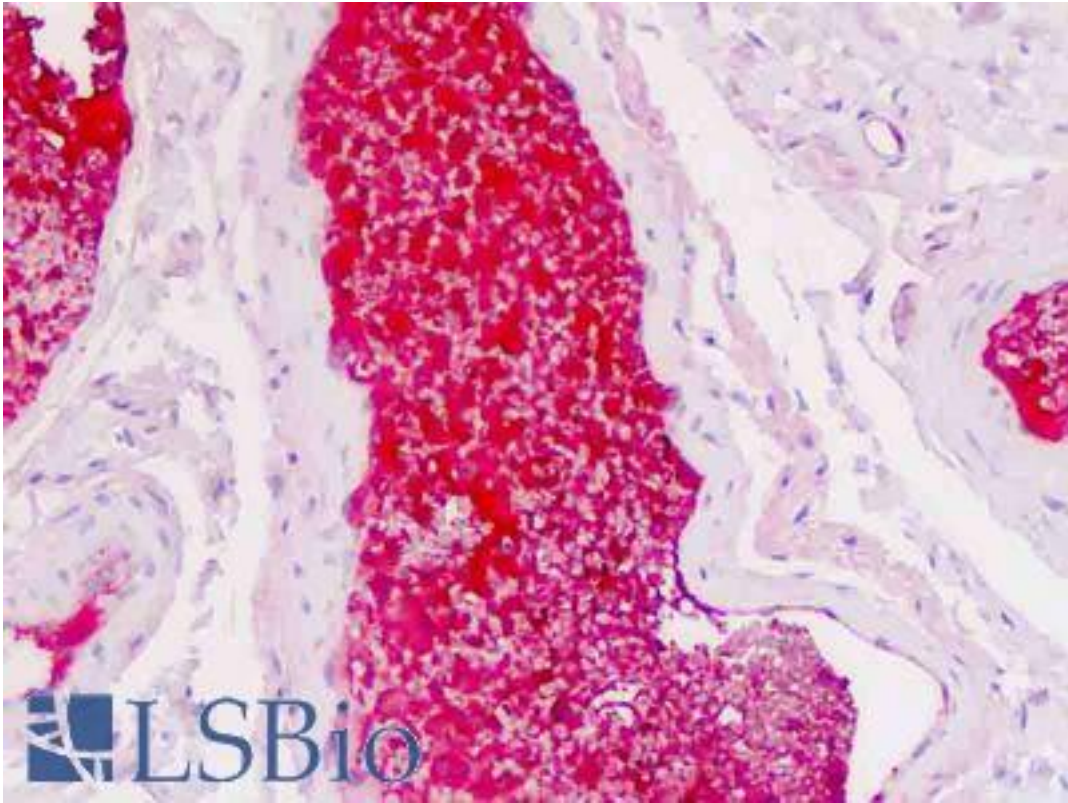


SERPINA1 / Alpha 1 Antitrypsin Mouse anti-Human Monoclonal Antibody - LS-B9010 - LSBio	
<b>CatalogID:</b>	LS-B9010
<b>Validation:</b>	This antibody replaces catalog number LS-C11884. It has been validated for use in the following assays: IHC-P.
<b>Target:</b>	serpin peptidase inhibitor, clade A (alpha-1 antiproteinase, antitrypsin), member 1 (SERPINA1)
<b>Synonyms:</b>	SERPINA1 Antibody, A1A Antibody, A1AT Antibody, AAT Antibody, Alpha 1 Antitrypsin Antibody, Alpha-1 protease inhibitor Antibody, Alpha-1-antiproteinase Antibody, Alpha-1-antitrypsin Antibody, Alpha1AT Antibody, PRO2275 Antibody, Alpha-1-antitrypsin null Antibody, PI1 Antibody, Serpin A1 Antibody
<b>Host</b>	SERPINA1 antibody was produced in Mouse
<b>Clonality:</b>	Monoclonal
<b>Isotype:</b>	IgG1
<b>Immunogen Species:</b>	SERPINA1 / Alpha 1 Antitrypsin antibody was raised against Human
<b>Antigen Type:</b>	Purified protein
<b>Immunogen:</b>	SERPINA1 / Alpha 1 Antitrypsin antibody was raised against alpha-1-Antitrypsin, affinity purified (KLH).
<b>Specificity:</b>	Recognizes human alpha-1-Antitrypsin. No cross-reactivity with alpha-1-antichymotrypsin.
<b>Reactivity:</b>	Human
<b>Purification:</b>	Purified
<b>Presentation:</b>	PBS, pH 7.5. No preservative added.
<b>Recommended Storage:</b>	Long term: -20°C; Short term: +4°C. Avoid repeat freeze-thaw cycles.
<b>Usage Summary:</b>	Suitable for use in ELISA. ELISA: 1:50000.
<b>Uses:</b>	IHC - Paraffin (10 µg/ml), ELISA (1:50000) (Optimal dilution to be determined by the researcher)
<b>Size:</b>	250 µg
<b>Concentration:</b>	1.9 mg/ml

**Immunohistochemistry Image:**



Human Colon, Vessel Plasma: Formalin-Fixed, Paraffin-Embedded (FFPE)

**Requested From:**

Japan

Laboratory Reagent For In Vitro Research Use Only

Not for resale without prior written consent from LifeSpan BioSciences, Inc.

Created on 9/24/2014

© 2014 LifeSpan BioSciences