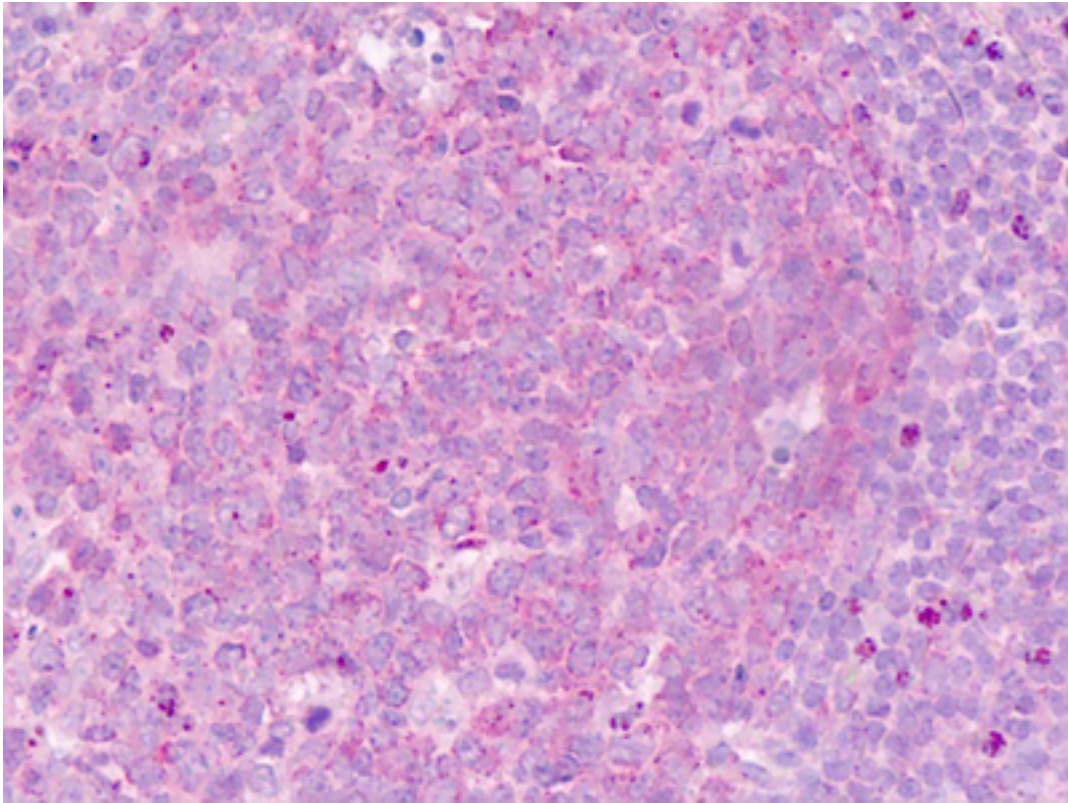


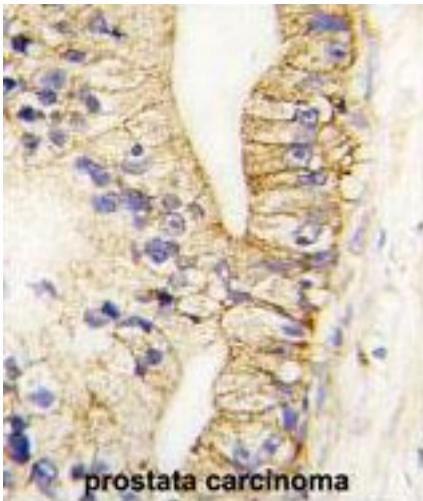
CDH7 / Cadherin 7 Rabbit anti-Human Polyclonal (N-Terminus) Antibody - LS-B9000 - LSBio	
<b>CatalogID:</b>	LS-B9000
<b>Validation:</b>	This antibody replaces catalog number LS-C98212. It has been validated for use in the following assays: IHC-P.
<b>Target:</b>	cadherin 7, type 2 (CDH7)
<b>Synonyms:</b>	CDH7 Antibody, Cadherin-7 Antibody, CDH7L1 Antibody, Cadherin 7 Antibody, Cadherin 7, type 2 Antibody
<b>Family / Subfamily:</b>	Cadherin / not assigned-Cadherin
<b>Host</b>	CDH7 antibody was produced in Rabbit
<b>Clonality:</b>	Polyclonal
<b>Immunogen Species:</b>	CDH7 / Cadherin 7 antibody was raised against Human
<b>Antigen Type:</b>	Synthetic peptide
<b>Immunogen:</b>	CDH7 / Cadherin 7 antibody was raised against kLH conjugated synthetic peptide selected from the N-term region of human CDH7.
<b>Epitope:</b>	N-Terminus
<b>Reactivity:</b>	Human
<b>Purification:</b>	Immunoaffinity purified
<b>Presentation:</b>	PBS with 0.09% (w/v) sodium azide
<b>Recommended Storage:</b>	Maintain refrigerated at 2-8°C for up to 6 months. For long term storage store at -20°C.
<b>Uses:</b>	IHC - Paraffin (10 µg/ml), Western blot (1:1000), Flow Cytometry (1:10 - 1:50) (Optimal dilution to be determined by the researcher)
<b>Size:</b>	50 µg

**Immunohistochemistry Image:**



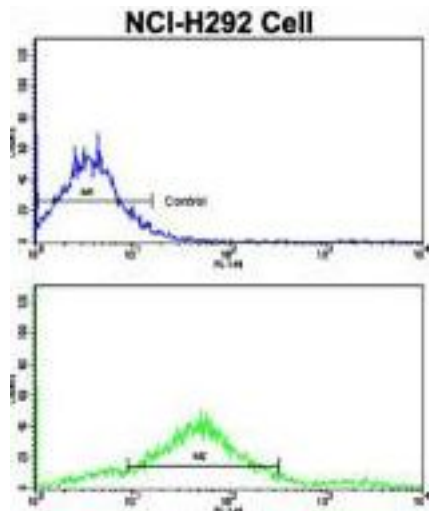
Human Tonsil: Formalin-Fixed, Paraffin-Embedded (FFPE)

**Immunohistochemistry Image:**



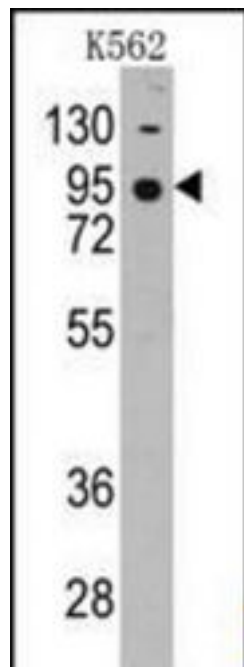
Formalin-fixed and paraffin-embedded human prostata carcinoma tissue reacted with CDH7 antibody (N-term), which was peroxidase-conjugated to the secondary antibody, followed by DAB staining.

**Flow Cytometry Image:**



Flow cytometry of NCI-H292 cells using Cadherin 7 (CDH7) Antibody (N-term) (bottom histogram) compared to a negative control cell (top histogram). FITC-conjugated goat-anti-rabbit secondary antibodies were used for the analysis.

**Western Blot Image:**



Western blot of anti-CDH7 Pab LS-B9000 in K562 cell line lysates (35 ug/lane). CDH7 (arrow) was detected using the purified Pab (1:60 dilution).

**Requested From:**

Japan

Laboratory Reagent For In Vitro Research Use Only

Not for resale without prior written consent from LifeSpan BioSciences, Inc.

Created on 9/24/2014

© 2014 LifeSpan BioSciences