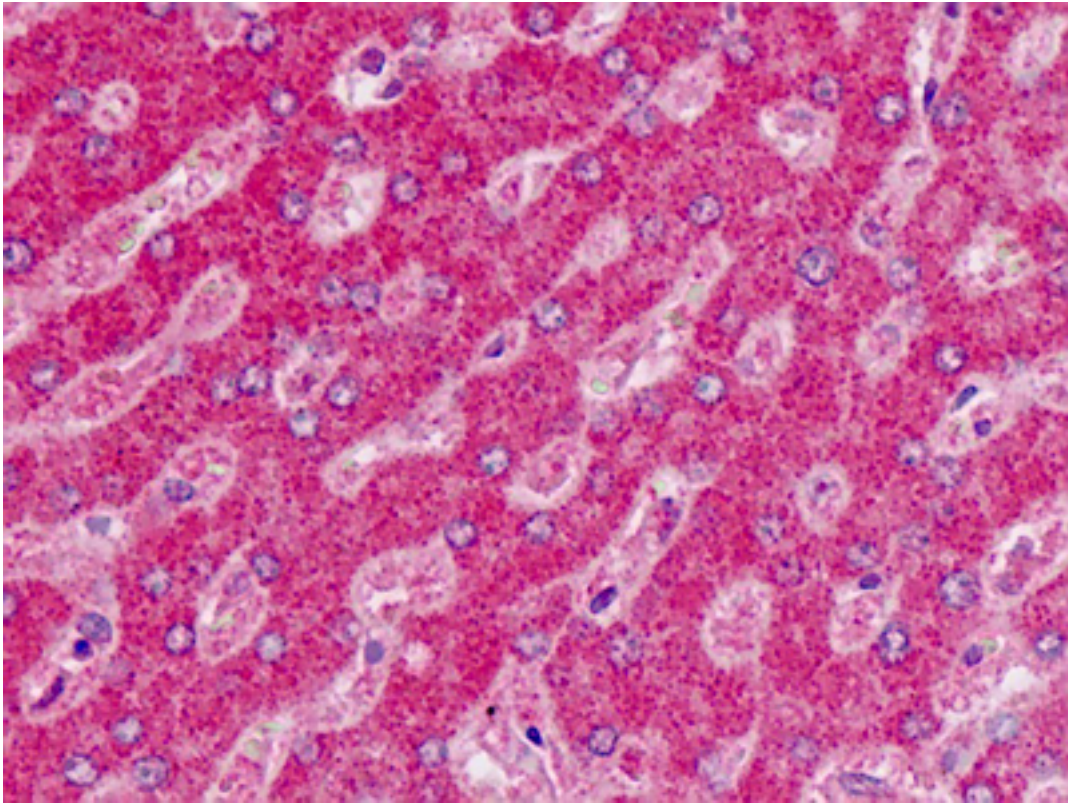


ALDH6A1 Rabbit anti-Human Polyclonal (N-Terminus) Antibody - LS-B8998 - LSBio

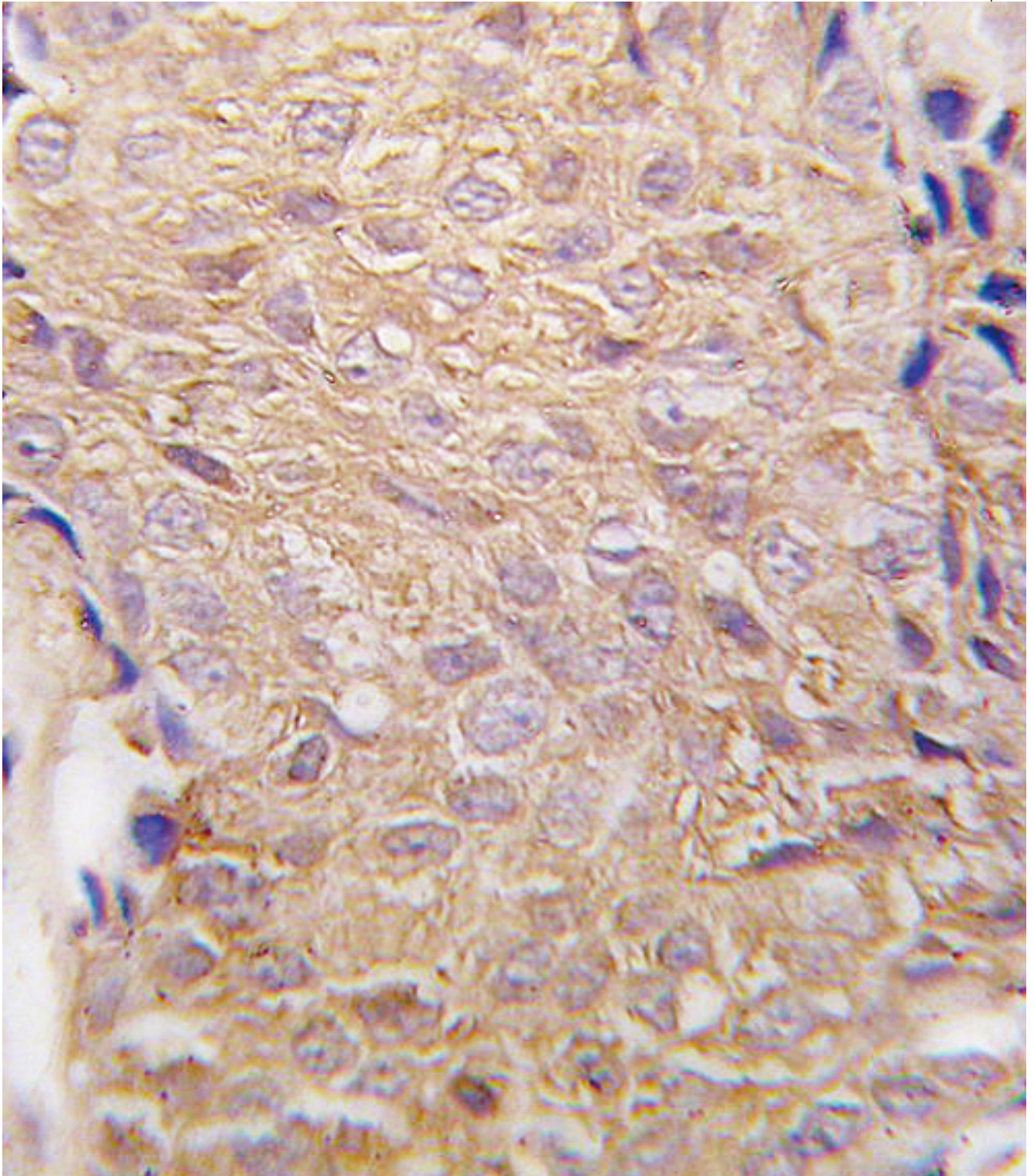
CatalogID:	LS-B8998
Validation:	This antibody replaces catalog number LS-C98207. It has been validated for use in the following assays: IHC-P.
Target:	aldehyde dehydrogenase 6 family, member A1 (ALDH6A1)
Synonyms:	ALDH6A1 Antibody, MMSDH Antibody, MMSADHA Antibody
Host	ALDH6A1 antibody was produced in Rabbit
Clonality:	Polyclonal
Immunogen Species:	ALDH6A1 antibody was raised against Human
Antigen Type:	Synthetic peptide
Immunogen:	ALDH6A1 antibody was raised against KLH conjugated synthetic peptide selected from the N-terminal region of human ALDH6A1.
Epitope:	N-Terminus
Reactivity:	Human
Purification:	Immunoaffinity purified
Presentation:	PBS with 0.09% (w/v) sodium azide
Recommended Storage:	Maintain refrigerated at 2-8°C for up to 6 months. For long term storage store at -20°C.
Uses:	IHC - Paraffin (10 µg/ml), Western blot (1:1000), Flow Cytometry (1:10 - 1:50) (Optimal dilution to be determined by the researcher)
Size:	200 µl

Immunohistochemistry Image:



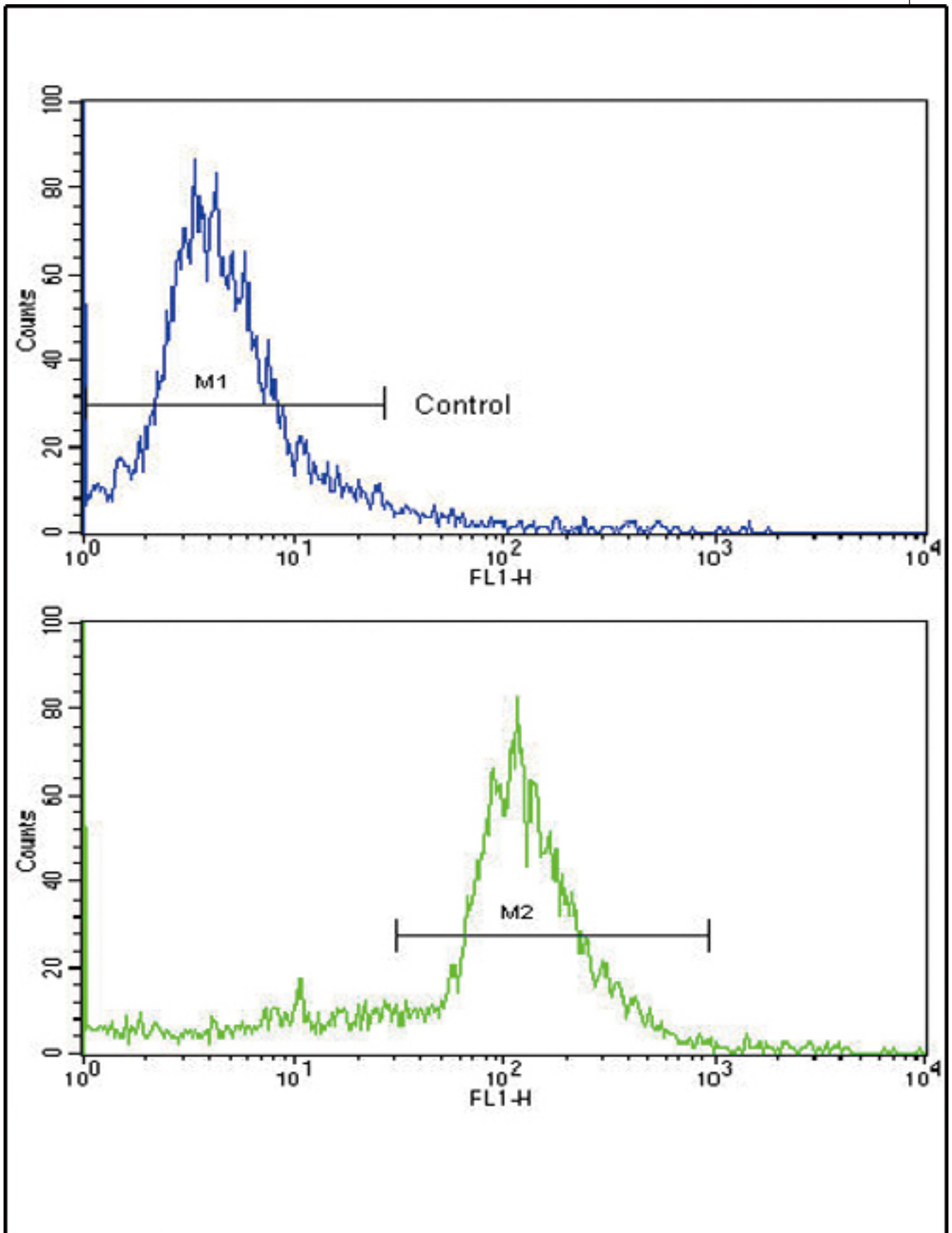
Human Liver: Formalin-Fixed, Paraffin-Embedded (FFPE)

Immunohistochemistry Image:



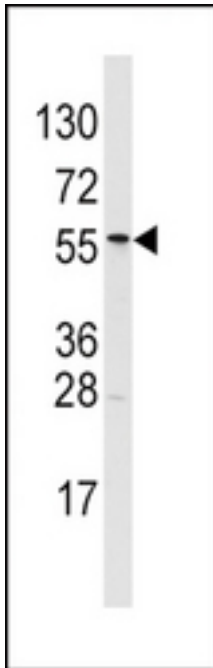
Formalin-fixed and paraffin-embedded human breast carcinoma tissue reacted with *ALDH6A1 antibody (N-term), which was peroxidase-conjugated to the secondary antibody, followed by DAB staining.

Flow Cytometry Image:



Flow cytometry of ATDC5 cells using ALDH6A1 Antibody (Center) (bottom histogram) compared to a negative control cell (top histogram). FITC-conjugated goat-anti-rabbit secondary antibodies were used for the analysis.

Western Blot Image:



Western blot of ALDH6A1 Antibody (N-term) LS-B8998 in T47D cell line lysates (35 ug/lane). ALDH6A1 (arrow) was detected using the purified Pab (1:60 dilution).

Requested From:

Japan

Laboratory Reagent For In Vitro Research Use Only

Not for resale without prior written consent from LifeSpan BioSciences, Inc.

Created on 9/24/2014

© 2014 LifeSpan BioSciences