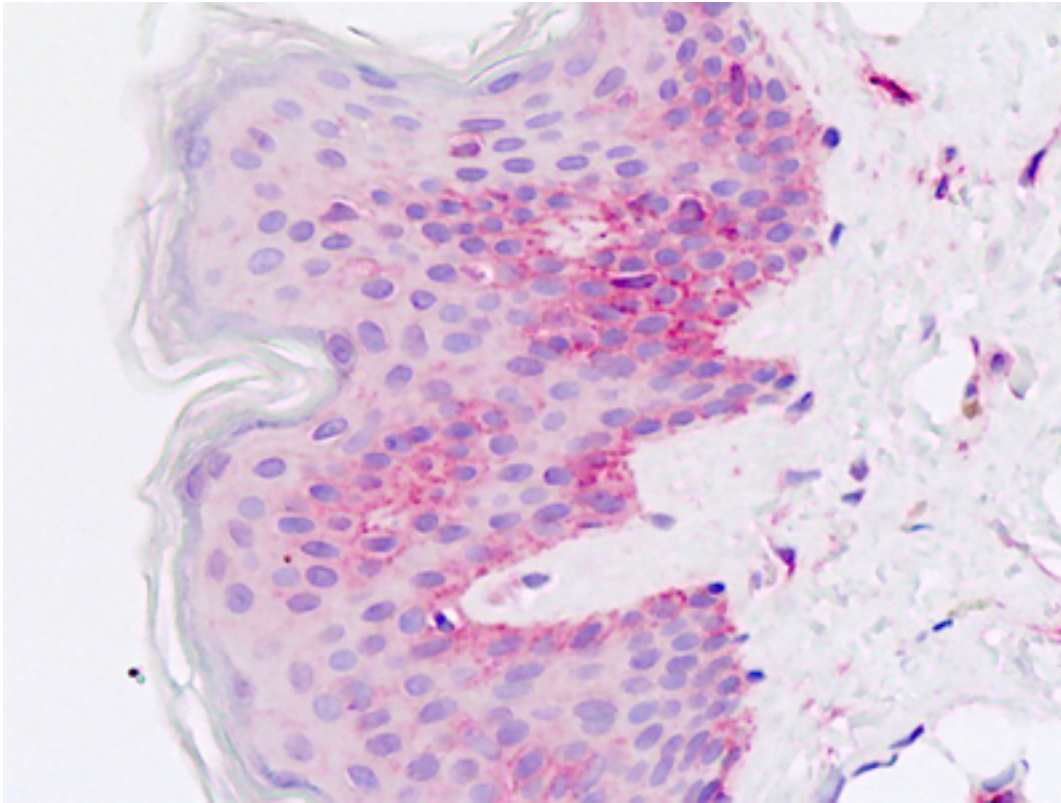


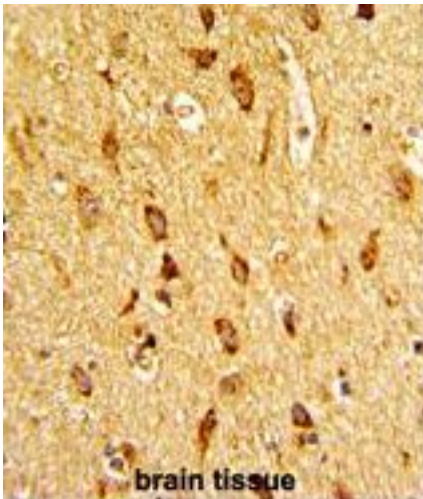
CDH13 / Cadherin 13 Rabbit anti-Human Polyclonal (N-Terminus) Antibody - LS-B8997 - LSBio	
CatalogID:	LS-B8997
Validation:	This antibody replaces catalog number LS-C98149. It has been validated for use in the following assays: IHC-P.
Target:	cadherin 13 (CDH13)
Synonyms:	CDH13 Antibody, Cadherin-13 Antibody, CDHH Antibody, Cdht Antibody, Heart cadherin Antibody, H-cadherin Antibody, T-cad Antibody, T-cadherin Antibody, Truncated cadherin Antibody, p105 Antibody
Family / Subfamily:	Cadherin / not assigned-Cadherin
Host	CDH13 antibody was produced in Rabbit
Clonality:	Polyclonal
Immunogen Species:	CDH13 / Cadherin 13 antibody was raised against Human
Antigen Type:	Synthetic peptide
Immunogen:	CDH13 / Cadherin 13 antibody was raised against kLH conjugated synthetic peptide selected from the N-terminal region of human CDH13.
Epitope:	N-Terminus
Reactivity:	Human
Purification:	Immunoaffinity purified
Presentation:	PBS with 0.09% (w/v) sodium azide
Recommended Storage:	Maintain refrigerated at 2-8°C for up to 6 months. For long term storage store at -20°C.
Uses:	IHC - Paraffin (10 µg/ml), Western blot (1:1000), Flow Cytometry (1:10 - 1:50) (Optimal dilution to be determined by the researcher)
Size:	200 µl

Immunohistochemistry Image:



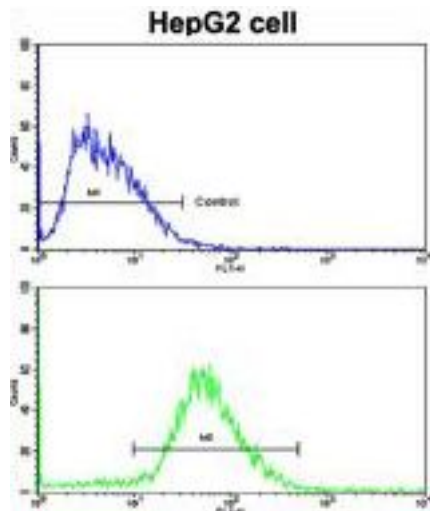
Human Skin: Formalin-Fixed, Paraffin-Embedded (FFPE)

Immunohistochemistry Image:



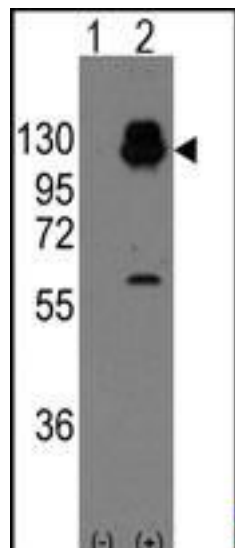
Formalin-fixed and paraffin-embedded human brain tissue with H Cadherin (CDH13) Antibody (N-term), which was peroxidase-conjugated to the secondary antibody, followed by DAB staining.

Flow Cytometry Image:



Flow cytometry of HepG2 cells using H Cadherin (CDH13) Antibody (N-term) (bottom histogram) compared to a negative control cell (top histogram). FITC-conjugated goat-anti-rabbit secondary antibodies were used for the analysis.

Western Blot Image:



Western blot of CDH13 (arrow) using rabbit polyclonal CDH13 Antibody (N-term) LS-B8997. 293 cell lysates (2 ug/lane) either nontransfected (Lane 1) or transiently transfected with the CDH13 gene (Lane 2).

Requested From:

Japan

Laboratory Reagent For In Vitro Research Use Only

Not for resale without prior written consent from LifeSpan BioSciences, Inc.

Created on 9/24/2014

© 2014 LifeSpan BioSciences